



DAUTI
ALFAIATARIA E CAMISARIA
TAILORING

IS YOUR BUSINESS READY TO **GLAMOUR?**



Casaco senhora - 2 botões

ref: **CAS 1003/242**
cor: 3902
tamanho: 32 - 54

Lady's jacket - 2 buttons

ref: **CAS 1003/242**
color: 3902
size: 32 - 54



Gravata homem

ref: **GRA 2000/256**
cor: 05
tamanho: Único

Man's tie

ref: **GRA 2000/256**
color: 05
size: One size only



Camisa homem
ref: CAM 2001/233
cor: 0009
tamanho: 36 - 52

Man's shirt
ref: CAM 2001/233
color: 0009
size: 36 - 52

Casaco homem - 2 botões

com uma abertura nas costas
ref: CAS 2003/242
cor: 3902
tamanho: 46 - 62

Man's jacket - 2 buttons

one back vent
ref: CAS 2003/242
color: 3902
size: 46 - 62

Calça homem

com uma prega
ref: CAL 2008/242
cor: 3902
tamanho: 36 - 54

Man's trousers

one front pleated
ref: CAL 2008/242
color: 3902
size: 36 - 54



Colete homem - 5 botões

ref.: COL 2000/242
cor: 3902
tamanho: 44 - 62

Man's waistcoat - 5 buttons

ref.: COL 2000/242
color: 3902
size: 44 - 62



Saia senhora

ref.: SAI 1000/242
cor: 3902
tamanho: 32 - 54

Lady's skirt

ref.: SAI 1000/242
color: 3902
size: 32 - 54

Blusa senhora

manga 3/4
ref.: CAM 1001/232
cor: 0024
tamanho: XS - 3XL

Lady's blouse

3/4 sleeve
ref.: CAM 1001/232
color: 0024
size: XS - 3XL





Sobretudo homem - 3 botões
 ref.: SOB 2000/286
 cor: 01
 tamanho: 46 - 62

Man's coat - 3 buttons
 ref.: SOB 2000/286
 color: 01
 size: 46 - 62



Colete senhora - 5 botões
 ref.: CAL 1000/242
 cor: 3902
 tamanho: 32 - 54

Lady's waistcoat - 5 buttons
 ref.: CAL 1000/242
 color: 3902
 size: 32 - 54

Calça senhora
 ref.: CAL 1001/242
 cor: 3902
 tamanho: 32 - 54

Lady's trousers
 ref.: CAL 1001/242
 color: 3902
 size: 32 - 54

**Casaco senhora - 3 botões**

ref.: **CAS 1001/244**
cor: 2119
tamanho: 32 - 54

Lady's jacket - 3 buttons

ref.: **CAS 1001/244**
color: 2119
size: 32 - 54

Calça senhora

sem pregas
ref.: **CAL 1001/244**
cor: 2119
tamanho: 32 - 54

Lady's trousers

without pleats
ref.: **CAL 1001/244**
color: 2119
size: 32 - 54

Casaco homem - 3 botões

ref.: **CAS 2001/244**
cor: 2119
tamanho: 46 - 62

Man's jacket - 3 buttons

ref.: **CAS 2001/244**
color: 2119
size: 46 - 62

Calça homem

com duas pregas
ref.: **CAL 2001/244**
cor: 2119
tamanho: 36 - 62

Man's trousers

two front pleated
ref.: **CAL 2001/244**
color: 2119
size: 36 - 62





Camisa senhora

corte princesa
ref.: **CAM 1003/223**
cor: 223/010039-225/013013
tamanho: XS - 3XL

Lady's blouse

princess cut
ref.: **CAM 1003/223**
color: 223/010039-225/013013
size: XS - 3XL



Camisa homem

ref.: **CAM 2001/210**
cor: 2701
tamanho: 36 - 52

Man's shirt

ref.: **CAM 2001/210**
color: 2701
size: 36 - 52

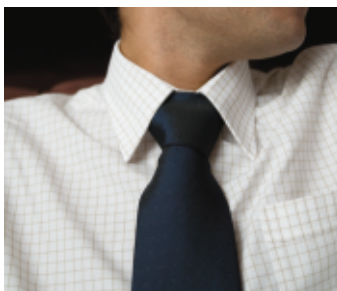


Colete homem - 5 botões

ref.: **COL 2000/243**
cor: 1301
tamanho: 44 - 62

Man's waistcoat - 5 buttons

ref.: **COL 2000/243**
color: 1301
size: 44 - 62



Gravata homem

ref.: **GRA 2000/255**
cor: 02
tamanho: Único

Man's tie

ref.: **GRA 2000/255**
color: 02
size: One size only



Cinto senhora

ref.: **CIN 1000/244**
cor: 2139
tamanho: 75, 80, 85, 90, 95,
100, 105, 110 cm

Lady's belt

ref.: **CIN 1000/244**
color: 2139
size: 75, 80, 85, 90, 95,
100, 105, 110 cm



Sapatos

obs: ver secção de acessórios

Shoes

obs: check the accessories section

Gabardine homem

forro duplo em felpa com fecho
ref.: **GAB 2000/200**
cor: 116
tamanho: 46 - 62

Man's trenchcoat

double lining with zipper
ref.: **GAB 2000/200**
color: 116
size: 46 - 62

**Gabardine senhora - 3 botões**

ref.: **GAB 1000/269**
cor: 08
tamanho: XS - 3XL

Lady's trenchcoat - 3 buttons

ref.: **GAB 1000/269**
color: 08
size: XS - 3XL



Camisa homem
ref.: **CAM 2001/232**
cor: 0024
tamanho: 36 - 52

Man's shirt
ref.: **CAM 2001/232**
color: 0024
size: 36 - 52



Sobretudo homem - 3 botões

ref.: **SOB 2001/288**
cor: 01
tamanho: 46 - 62

Man's coat - 3 buttons

ref.: **SOB 2001/288**
color: 01
size: 46 - 62

Calça homem

com duas pregas
ref.: **CAL 2001/244**
cor: 2119
tamanho: 36 - 62

Man's trousers

two front pleated
ref.: **CAL 2001/244**
color: 2119
size: 36 - 62

Colete homem - 6 botões

ref.: COL 2001/244
cor: 2119
tamanho: 44 - 62

Man's waistcoat - 6 buttons

ref.: COL 2001/244
color: 2119
size: 44 - 62



Gravata homem
ref.: GRA 2000/253
cor: 02
tamanho: Único

Man's tie
ref.: GRA 2000/253
color: 02
size: One size only



Casaco homem - 3 botões
com uma abertura nas costas
ref.: CAS 2001/244
cor: 2119
tamanho: 46 - 62

Man's jacket - 3 buttons
one back vent
ref.: CAS 2001/244
color: 2119
size: 46 - 62



Casaco senhora - 3 botões

ref.: CAS 1001/244

cor: 3008

tamanho: 32 - 54

Lady's jacket - 3 buttons

ref.: CAS 1001/244

color: 3008

size: 32 - 54



Gravata homem

ref.: GRA 2000/251

cor: 902

tamanho: Único

Man's tie

ref.: GRA 2000/251

color: 902

size: One size only



Colete senhora - 5 botões

ref.: COL 1000/244
cor: 3008
tamanho: 32 - 54

Woman's waistcoat - 5 buttons

ref.: COL 1000/244
color: 3008
size: 32 - 54



Faixa cetim

sem pregas - ref.: FAI 2000/287
com pregas - ref.: FAI 2001/287
cor: 01
tamanho: M-L

Satin waistband

without pleats - ref.: FAI 2000/287
with pleats - ref.: FAI 2001/287
color: 01
size: M-L

Saia senhora

ref.: SAI 1000/244
cor: 3008
tamanho: 32 - 54

Lady's skirt

ref.: SAI 1000/244
color: 3008
size: 32 - 54

Camisa senhora

ref.: CAM 1001/212
cor: 4332
tamanho: XS - 3XL

Lady's blouse

ref.: CAM 1001/212
color: 4332
size: XS - 3XL



Camisa homem
ref.: **CAM 2001/208**
cor: 24090
tamanho: 36 - 52

Man's shirt
ref.: **CAM 2001/208**
color: 24090
size: 36 - 52

Calça senhora
sem pregas
ref.: **CAL 1001/239**
cor: 3902
tamanho: 32 - 54

Lady's trousers
without pleats
ref.: **CAL 1001/239**
color: 3902
size: 32 - 54





Casaco senhora - 3 botões

ref.: **CAS 1001/239**
cor: 3902
tamanho: 32 - 54

Lady's jacket - 3 buttons

ref.: **CAS 1001/239**
color: 3902
size: 32 - 54



Calça homem

com uma prega
ref.: **CAL 2008/239**
cor: 3902
tamanho: 36 - 62

Man's trousers

one front pleated
ref.: **CAL 2008/239**
color: 3902
size: 36 - 62



Casaco homem - 3 botões

com duas aberturas nas costas
ref.: **CAS 2002/239**
cor: 3902
tamanho: 46 - 62

Man's jacket - 3 buttons

double back vents
ref.: **CAS 2002/239**
color: 3902
size: 46 - 62

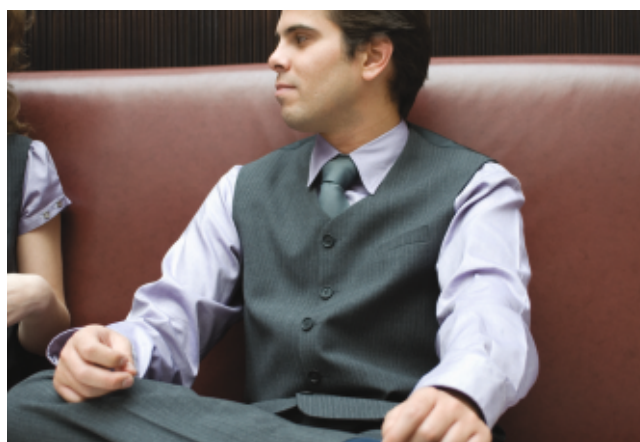


Colete senhora - 4 botões

ref.: COL 1001/239
cor: 3902
tamanho: 32 - 54

Lady's waistcoat- 4 buttons

ref.: COL 1001/239
color: 3902
size: 32 - 54

**Colete homem - 6 botões**

ref.: COL 2001/239
cor: 3902
tamanho: 44 - 62

Man's waistcoat - 6 buttons

ref.: COL 2001/239
color: 3902
size: 44 - 62

Gravata homem

ref.: GRA 2000/251
cor: 110
tamanho: Único

Man's tie

ref.: GRA 2000/251
color: 110
size: One size only



Blusa senhora
ref.: CAM 1002/208
cor: 24090
tamanho: XS - 3XL

Lady's blouse
ref.: CAM 1002/208
color: 24090
size: XS - 3XL







Camisa homem
ref.: CAM 2001/210
cor: 2469
tamanho: 36 - 52

Man's shirt
ref.: CAM 2001/210
color: 2469
size: 36 - 52



Papillon
ref.: PAP 4000/251
cor: 02
tamanho: Único

Bow tie
ref.: PAP 4000/251
color: 02
size: One size only

Colete homem - 6 botões
ref.: COL 2001/238
cor: 07
tamanho: 44 - 62

Man's waistcoat - 6 buttons
ref.: COL 2001/238
color: 07
size: 44 - 62

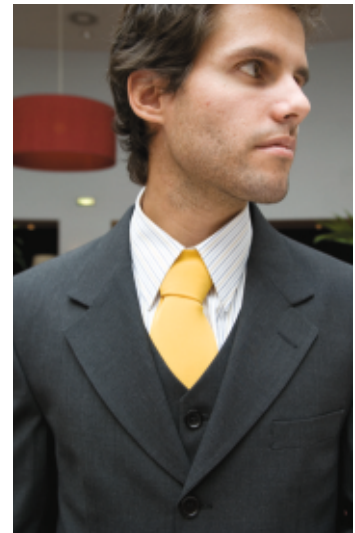


**Casaco homem - 3 botões**

com uma abertura nas costas
ref.: **CAS 2001/244**
cor: 3008
tamanho: 44 - 62

Man's jacket - 3 buttons

one back vent
ref.: **CAS 2001/244**
color: 3008
size: 44 - 62

**Saia senhora**

com abertura atrás
ref.: **SAI 1000/245**
cor: 2999
tamanho: 34 - 54

Lady's skirt

center back vent
ref.: **SAI 1000/245**
color: 2999
size: 34 - 54

**Echarpe senhora**

ref.: **ECH 1000/260**
cor: 03
medida: 70cm*70cm
obs: Outras cores e medidas sob consulta

Lady's scarf

ref.: **ECH 1000/260**
color: 03
measure: 70cm*70cm
obs: Other colors and measures available under consultation



ALFANTARIA E CAMISARIA
TAILORING

DAUTI



Calça homem
com duas pregas
ref.: **CAL 2001/244**
cor: 3008
tamanho: 36 - 62

Man's trousers
two front pleated
ref.: **CAL 2001/244**
color: 3008
size: 36 - 62





Camisa homem
ref.: CAM 2005/289
cor: 01
tamanho: 36 - 52

Man's shirt
ref.: CAM 2005/289
color: 01
size: 36 - 52



Gravata homem
ref.: GRA 2000/260
cor: 02
tamanho: Único

Man's tie
ref.: GRA 2000/260
color: 02
size: One size only



Colete homem - 6 botões
ref.: COL 2001/244
cor: 3008
tamanho: 44 - 62

Man's waistcoat - 6 buttons
ref.: COL 2001/244
color: 3008
size: 44 - 62



Luvras senhora
em pele extrafina
ref.: **LUV 1000/290**
cor: 01
tamanho: 1 - 3

Lady's gloves
leather extra fine
ref.: **LUV 1000/290**
color: 01
size: 1 - 3



Saia senhora
ref.: **SAI 1003/291**
cor: 01
tamanho: 32 - 54

Lady's skirt
ref.: **SAI 1003/291**
color: 01
size: 32 - 54



Casaco senhora - 2 botões
ref.: **CAS 1007/291**
cor: 01
tamanho: 32 - 54

Lady's jacket - 2 buttons
ref.: **CAS 1007/291**
color: 01
size: 32 - 54



Écharpe dupla face

ref.: **ECH 1002/281**
cor: 01/02
tamanho: 75cm*200cm
obs: Outras cores e medidas sob consulta

Double face scarf

ref.: **ECH 1002/281**
color: 01/02
size: 75cm*200cm
obs: Other colors and measures available under consultation



Camisa senhora

manga 3/4
ref.: **CAM 1009/293**
cor: 01
tamanho: XS - 3XL

Lady's blouse

3/4 sleeve
ref.: **CAM 1009/293**
color: 01
size: XS - 3XL

Sapatos

obs: ver secção acessórios

Shoes

obs: check the accessories section





Casaco homem trespasse

com uma abertura nas costas
ref.: **CAS 2007/291**
cor: 01
tamanho: 46 - 62

Man's blazer overlap

one back vent
ref.: **CAS 2007/291**
color: 01
size: 46 - 62



Sobretudo homem

ref.: **SOB 2002/294**
cor: 01
tamanho: 46 - 62

Man's coat

ref.: **SOB 2002/294**
color: 01
size: 46 - 62

Chapéu

obs: ver secção acessórios

Hat

obs: check the accessories section





Cinto

obs: ver secção acessórios

Belt

obs: check the accessories section

Camisa homem

com devisa e bolso no peito
ref.: **CAM 2003/293**
cor: 01
tamanho: 36 - 52

Man's shirt

with chevron and pocket with flap
ref.: **CAM 2003/293**
color: 01
size: 36 - 52



Calça homem

com uma prega
ref.: **CAL 2008/291**
cor: 01
tamanho: 36 - 62

Man's trousers

one front pleated
ref.: **CAL 2008/291**
color: 01
size: 36 - 62



Gravata homem

ref.: **GRA 2000/292**
cor: 01
tamanho: Único

Man's tie

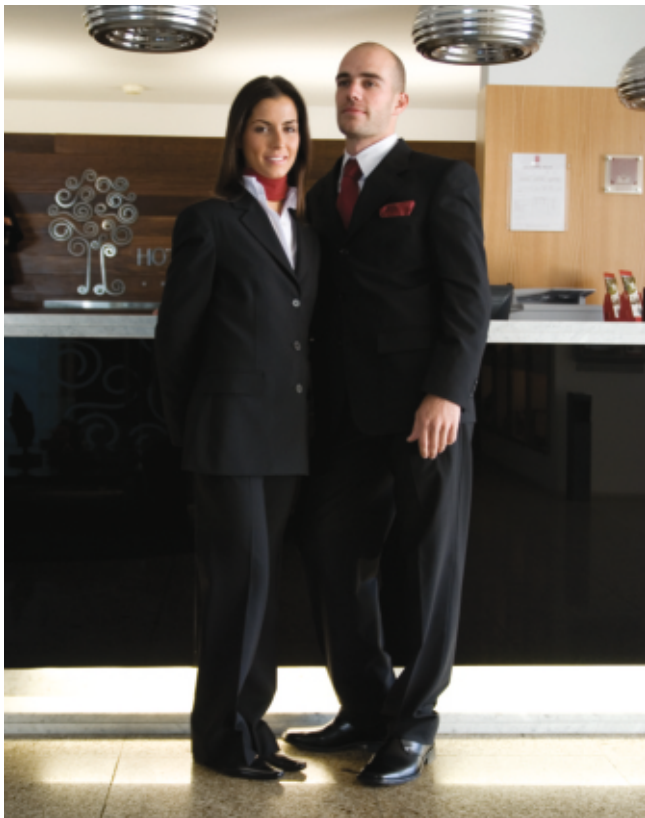
ref.: **GRA 2000/292**
color: 01
size: One size only

Écharpe homem

dupla face
ref.: **ECH 2000/292**
cor: 01
tamanho: 30cm*140cm
obs: outras cores e medidas sob consulta

Man's scarf

double face
ref.: **ECH 2000/292**
color: 01
size: 30cm*140cm
obs: other colors and measures available under consultation

**Calça senhora**

sem pregas
ref.: **CAL 1001/245**
cor: 2999
tamanho: 32 - 54

Lady's trousers

without pleats
ref.: **CAL 1001/245**
color: 2999
size: 32 - 54

Calça homem

com duas pregas
ref.: **CAL 2001/245**
cor: 2999
tamanho: 36 - 62

Man's trousers

two front pleats
ref.: **CAL 2001/245**
color: 2999
size: 36 - 62

**Casaco senhora - 3 botões**

ref.: **CAS 1001/245**
cor: 2999
tamanho: 32 - 54

Lady's jacket - 3 buttons

ref.: **CAS 1001/245**
color: 2999
size: 32 - 54

Casaco homem - 3 botões

com uma abertura nas costas
ref.: **CAS 2001/245**
cor: 2999
tamanho: 44 - 62

Man's jacket - 3 buttons

one back vent
ref.: **CAS 2001/245**
color: 2999
size: 44 - 62

Lenço bolso peito

ref.: **LEN 2000/251**
cor: 02
tamanho: Único
obs: outras cores disponíveis

Pockets scarves

ref.: **LEN 2000/251**
color: 02
size: One size only
obs: other colors available

Écharpe senhora

ref.: **ECH 1000/260**
cor: 03
medida: 70cm*70cm
obs: outras cores e medidas sob consulta

Lady's scarf

ref.: **ECH 1000/260**
color: 03
measure: 70cm*70cm
obs: other colors and measures available under consultation





ALFANATARIA E CAMISARIA
TAILORING

DAUTI



Casaco senhora malha
ref.: **MAL 1005/331**
cor: 03
tamanho: XS - 3XL

Lady's cardigan
ref.: **MAL 1005/331**
color: 03
size: XS - 3XL



Pullower homem malha
ref.: **MAL 2007/331**
cor: 02
tamanho: S - 4XL

Man's pollover
ref.: **MAL 2007/331**
color: 02
size: S - 4XL



Faixa cetim
sem pregas - ref.: **FAI 2000/287**
com pregas - ref.: **FAI 2001/287**
cor: 01
tamanho: M-L

Satin waistband
without pleats - ref.: **FAI 2000/287**
with pleats - ref.: **FAI 2001/287**
color: 01
size: M-L

Gravata homem
ref.: **GRA 2000/251**
cor: 02
tamanho: único
obs: outras cores disponíveis

Man's tie
ref.: **GRA 2000/251**
color: 02
size: one size only
obs: other colors available



Camisola homem malha
com decote em V
ref.: **MAL 2008/331**
cor: 02 - antracite
tamanho: S - 4XL

Man's pollower
with V neck
ref.: **MAL 2008/331**
color: 02 - antracite
size: S - 4XL



Vestido senhora

ref.: VES 1002/301
cor: 01
tamanho: XS - 3XL

Lady's dress

ref.: VES 1002/301
color: 01
size: XS - 3XL

Écharpe senhora

ref.: ECH 1004/260
cor: 06
tamanho: único
obs: outras cores e medidas
sob consulta

Lady's scarf

ref.: ECH 1004/260
color: 06
size: one size only
obs: other colors and measures
available under consultation

Casaco senhora
ref.: CAS 1013/245
cor: 2999
tamanho: 32 - 54

Lady's jacket
ref.: CAS 1013/245
color: 2999
size: 32 - 54



Casaco homem
ref.: CAS 2002/244
cor: 3043
tamanho: 46 - 62

Man's jacket
ref.: CAS 2002/244
color: 3043
size: 46 - 62

Calça homem
ref.: CAL 2001/244
cor: 3043
tamanho: 36 - 62

Man's trousers
ref.: CAL 2001/244
color: 3043
size: 36 - 62



Casaco homem trespasse

com uma abertura nas costas
ref.: **CAS 2007/291**
cor: 01
tamanho: 46 - 62

Man's blazer overlap

one back vent
ref.: **CAS 2007/291**
color: 01
size: 46 - 62



Casaco senhora

ref.: **CAS 1007/291**
cor: 01
tamanho: 32 - 54

Lady's jacket

ref.: **CAS 1007/291**
color: 01
size: 32 - 54

Saia senhora

ref.: **SAI 1003/291**
cor: 02
tamanho: 32 - 54

Lady's skirt

ref.: **SAI 1003/291**
color: 02
size: 32 - 54



ALFANIATARIA E CAMISARIA
TAILORING

DAUTI

