

J O B E L I N E

work · fashion · fun

Annual Catalog  
**2019**

Workwear  
for Restaurant,  
Hotel & Catering

[www.em-group.com](http://www.em-group.com)

Removable ribbons for easy washing  
and a cool look:  
Bib apron Ben p. 29

EN0319JL 10099887



# WHY JOBELINE?

## 6 REASONS TO CHOOSE US



### Satisfied employees

Employee satisfaction starts with the clothes. That's why our workwear is stylish, comfortable and have many refined details especially for the gastronomy. Your employees will feel good and delight your guests with excellent service.



### One brand, as individual as you

Whether a hip burger restaurant, an elegant hotel or a rustic country inn: With a great variety of colors and countless possible combinations, we give your employees an individual and uniform look.



### Customizing

With your logo on your working clothes, you create a high recognition value at your guests and a team feeling among your employees. We are happy to personalize your working clothes for you.



### WERIN® TEC – the revolution of well-being

The difference is in the detail. Our own functional material WERIN® TEC is lightweight, comfortable, breathable and cool. Summarized: WERIN® TEC is the fabric that makes maximum performance possible.



### Fair return service

We are proud of our low return rates. They show that we fulfill our quality promise. If you are still not satisfied, you can exchange or return your clothes.



### Large sizes

We think big. That's why our clothes are also available in large sizes. The price stays small anyway, as all sizes cost the same.





► Polo shirt Oliver p. 47,  
Bib apron Sun p. 35

# JOBELINE

work · fashion · fun

## The new JOBELINE styles are available!

Do you want to set new accents with your clothing in your service and kitchen area? Then you are right at JOBELINE. We always create something new out of old classics. The result: For example, a polo shirt that promises long-lasting freshness. That's not available everywhere - only from us. Because we know: Only those who feel good, have power for working in the kitchen and with guests. That's why we are looking for innovations in all areas that will make your life easier. Typically JOBELINE!

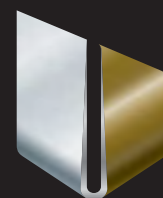
Have fun while choosing and ordering

*Your team of  
E.M. Group International*

## We are here for you!

|          |                      |
|----------|----------------------|
| Phone    | +49 8272 807 447     |
| Fax      | +49 8272 807 451     |
| WhatsApp | +49 151 659 340 02*  |
| E-mail   | service@em-group.com |
| Shop     | www.em-group.com     |

\*Office hours: Mon. to Thu. 7.30 a.m. - 5 p.m.  
Fri. 7.30 a.m. - 2 p.m.



german  
brand  
award  
'18  
winner

JOBELINE won a prize in the  
category »Industry Excellence  
in Branding Trade,  
Retail & e-Commerce«



# THAT'S HOW OUR STYLES ARE DEVELOPED

Our prediction for 2019: It's going to be stylish! Therefore, we have again developed a lot of new looks. To collect new ideas and to check materials and styles, we look for trends and functionalities at fairs, in restaurants and kitchens all over Europe. And we always stay on the pulse of the gastro scene. It results an elaborate development process. Because we only take the best!

## From the idea to the product

### 1. Design & material

We get our inspiration at trade and fashion fairs, but also in everyday gastronomy throughout Europe. Based on this, we develop styles, draw them and define materials, colors and details for your unique look. Also the care properties are specified. So that your employees will feel completely comfortable.

### 2. Define the cut & processing

As soon as all product requirements have been fixed, we define fits and dimensions and develop the cut of a clothing piece. Here, our high demands on workmanship, materials, functionality and care properties are particularly important.

### 3. Checking the samples

Our clothing pieces are always scrutinized one to two times. There, we check the fit and all product details.

### 4. Testing phase

Next to the usual washing and laboratory tests, we also do a practical test in everyday working life. Selected partners and customers check our products in the gastronomy. And only if everyone is satisfied, the clothing piece will be produced.

*Individually adjustable  
and removable  
neck and waistband*

*Practical tea  
towel loop*

*Functional  
pocket,  
suitable for a  
mini tablet*

*Coating for a cool  
look*

► Bib apron Ben p. 29





**NEW  
COLLECTION**

► Blouse & Shirt Kim p. 57, Bib apron & Apron Mora stripes p. 39



► Blouse & Shirt Jean p. 53, Apron Bristol p. 31

## Complete outfits by JOBELINE

Do you search for a complete outfit for your team? On the pages 14 - 19 we show you, how you can dress your employees from head to toe with clothes from JOBELINE. Like this, you create a coherent overall picture!



## Service novelties can be found here:

### Aprons

- Mora stripes p. 39
- Sun p. 15, 35
- Ben p. 17, 29
- Smoking p. 42
- Bristol p. 31
- Ramie p. 13
- James p. 42

### Bib aprons

- Mora stripes p. 39
- Sun p. 15, 35
- Ben p. 17, 29
- Botero p. 19, 23, 147
- Smoking p. 42
- Taras Canvas p. 31
- Ramie p. 13
- Pepe Gourmet p. 21
- Pepe Veggie p. 21

### Polo shirts

- Oliver p. 15, 47
- Cato Comfort p. 45

### Blouses & Shirts

- Kim p. 17, 57
- Jean p. 19, 53
- Delano p. 65
- Jona p. 52

### Vests

- Pinstripe p. 73
- Lagos p. 75

### Trousers

- Jaden p. 15, 17, 81

### Accessories

- Suspenders p. 82



# TOP MATERIALS FOR A TOP PERFORMANCE

We know: Only those who feel good have power for the kitchen and their guest. That's why we rely on materials that we exclusively developed for you and your employees. And which make you fit for excellence in the kitchen and service. A good working environment starts with the clothes.



► Chef shirt Joker p. 113



► Chef jacket Adam p. 117



► Chef jacket Paolo p. 107

## WERIN® TEC and WERIN® TEC Light



Two functional materials that were specially developed to make you fit for best performance in the kitchen and service. Exclusive by JOBELINE.

- Fast drying surface
- No sweating, less washing required
- Cooling effect due to deflection of the pent-up heat on the skin
- Optimal freedom of movement due to share of spandex

## High class material

### 3-twisted yarn

This fabric comes from men's fashion and was perfectly adapted for the kitchen!

- Extra lightweight fabric: Feels like a shirt
- Fine yards for a noble look
- No sweating
- Hard-wearing and easy-care
- Becomes softer over time, no felting

## High-quality all-rounder

### Blended fabric

Quality in excellent price-performance ratio - the fabric that does not need to be missed in any kitchen!

- Easy care blended fabric made of 65% polyester and 35% cotton
- Also available in extra lightweight quality for less sweating
- Great variety of colors, 60 °C wash
- Colorfast, tear-resistant, durable and very hard-wearing





► Chef jacket Carter p. 101

**NEW  
COLLECTION**



► Chef jacket Advanced p. 115



► Chef jacket Jannis p. 103

**Novelties for the kitchen  
can be found here:**

- Chef jacket Advanced p. 115
- Chef jacket Carter p. 101
- Chef jacket Jannis p. 103



# LIKE THIS, IT FITS FOR SURE!

In the gastronomy everyday, it is particularly important that the clothes fit properly. Nothing should pinch, tweak or distract from work. It also depends on the fit of shirts, blouses or T-shirts. Whether Slim fit or Regular fit: Choose the one that fits you and your employees best. Thus, you can completely concentrate on your guests.



## SLIM FIT

Slim Fit is a very fashionable and figure-hugging fit. Often, these clothes have a waisted cut or are generally narrower in cut. These styles are great for people who prefer a tight fit.



Women

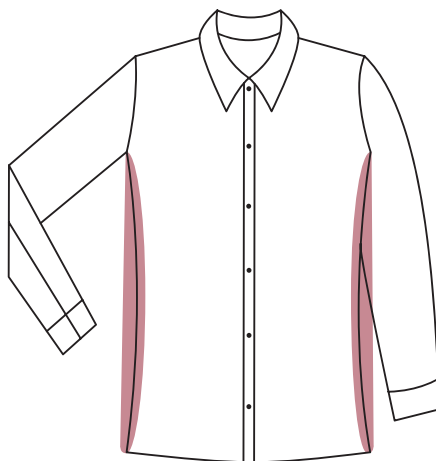


Men

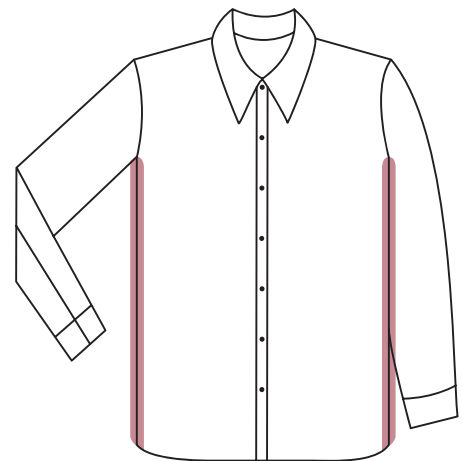


## REGULAR FIT

Regular Fit is a comfortable, only slightly waisted or straight cut fit. Thus, these clothes are suitable for every type of figure. The ones who prefer classic styles, are absolutely right with this fit.



Women



Men



# YOUR LOGO. YOUR UNIQUENESS.

With your logo on your clothes you achieve a high recognition value at your guests.  
We offer you the following options to personalize your workwear.



## **Logo embroidery**

- Valuable appearance
- Great color selection
- Durable
- No minimum order quantity

## **Laser branding**

- Very modern refining process
- Best suitable for jeans fabric, fleece and materials with high share of synthetic fibre
- Lifelong durability
- No minimum order quantity

David Blanc

## **Monogram embroidery**

- Valuable appearance
- Great selection of colors and fonts
- No minimum order quantity



## **Sew on**

- Valuable appearance
- Reusable
- Durable
- 50 pieces minimum order quantity

## **Print**

- Modern appearance
- Bright colors
- No minimum order quantity

More information and prices see p. 142  
or at [www.em-group.com](http://www.em-group.com)



# A STRONG TEAM

▶ p. 119

▶ p. 69

▶ p. 30



## SERVICE

p. 12

|                     |       |
|---------------------|-------|
| Inspiration         | p. 14 |
| Aprons & Bib aprons | p. 20 |
| Shirts              | p. 44 |
| Blouses & Shirts    | p. 52 |
| Vests               | p. 68 |
| Cardigans & Co.     | p. 76 |
| Service jackets     | p. 78 |
| Trousers            | p. 80 |
| Accessories         | p. 82 |

## KITCHEN

p. 96

|                     |        |
|---------------------|--------|
| Chef jackets        | p. 96  |
| Chef trousers       | p. 122 |
| Aprons & Bib aprons | p. 128 |
| Accessories         | p. 130 |
| Chef shoes          | p. 132 |

## RECEPTION

p. 84

|                  |       |
|------------------|-------|
| Costumes & Suits | p. 84 |
|------------------|-------|

## WELLNESS & CARE

p. 134

|          |        |
|----------|--------|
| Smocks   | p. 134 |
| Trousers | p. 139 |

## SALES

p. 90

|                 |       |
|-----------------|-------|
| Tops            | p. 90 |
| Outdoor jackets | p. 94 |

## INFORMATION

|                                |        |
|--------------------------------|--------|
| Care instructions & Size table | p. 140 |
| Customizing                    | p. 142 |
| Find products fast: Index      | p. 144 |
| General terms and conditions   | p. 146 |

FIND EVEN MORE & TRENDS IN OUR ONLINE SHOP

Order simply and comfortable online: 95% on stock, fast delivery, always new products and offerings!

[www.em-group.com](http://www.em-group.com)



Like this, we enjoy working!

# SERVICE

**NEW  
COLLECTION**

Trendy design and comfortable cuts meet at JOBELINE. And our products are perfectly suitable for the gastronomy. Like this, work is easy!

1

*Your logo could be placed here!*



2







1



3

Apron  
Ramie  
Piece only  
**16<sup>99</sup>**

- Length approx. 71 cm in the front centre, from neckline to seam edge
- Versatile, large pockets on the belly
- Comfortable, wide shoulder straps for perfect fit and relief of your back



2

Apron  
Ramie  
Piece from  
**11<sup>99</sup>**

- Large, spacious pockets
- Easy to care and easy to iron



3

### 1 Bib apron Ramie

Bib apron made of natural fiber ramie - a lightweight, light-resistant fabric with good tear resistance, which feels like linen. With large two-part pocket and two pen pockets on the front and adjustable neckband.

87% ramie, 13% cotton. 40 °C wash.

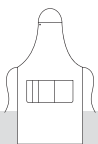
■ Color: olive, light grey

■ Size: 88x77 cm (l x w)

88x77 cm (l x w)

124917

Piece: 16,99



olive light grey



### 3 Apron Ramie

Apron made of natural fiber ramie - a lightweight, light-resistant fabric with good tear resistance, which feels like linen. With large two-part pocket on the belly and crossed straps on the back.

87% ramie, 13% cotton. 40 °C wash.

■ Color: olive, light grey

■ Size: One size

Sleeveless

124928

Piece: 16,99



olive light grey



### 2 Apron Ramie

Apron made of natural fiber ramie - a lightweight, light-resistant fabric with good tear resistance, which feels like linen. With large two-part pocket and two pen pockets on the front.

87% ramie, 13% cotton. 40 °C wash.

■ Color: olive, light grey

■ Size: 45x80 cm (l x w), 60x80 cm (l x w)

45x80 cm (l x w)

124923

Piece: 11,99

60x80 cm (l x w)

124924

Piece: 12,99



olive light grey



### Perfect for your embroidery



► Customizing p. 142

## RAMIE: NATURALLY GOOD

A silky, lightweight fabric with high tear resistance - this is the natural fiber ramie. Mostly it is used as an admixture to other textile fibers like cotton. It increases the strength and shine of cotton fibers and feels like linen. This durability makes it perfect for the use in the gastronomy. Like our apron Ramie, which is available as apron in two versions or as bib apron.

# LIGHT DENIM



For an extra dose of casualness: The light, soft denim of apron Sun looks cool and is totally comfortable. It can be perfectly combined with polo shirt Oliver and jeans Jaden - in classic black and white.

**NEW  
COLLECTION**



Women



► More info p. 44

- Sanitized® hygiene function reliably neutralizes odor
- With collar made of polo piqué fabric
- Easy to care and easy to iron



Men



■ Individually adjustable neckband



- With large pockets, suitable for mini tablet (24 x 17 cm, h x w)
- Practical loop at the side for tea towels



■ Practical pocket incl. pen pocket on the bib



Women

Men

- Five-pocket jeans with modern fit
- Made of robust denim



### 1 Polo shirt Oliver

Modern polo piqué shirt for women and men in easy care, crease resistant cotton-spandex quality. The integrated Sanitized® hygiene function reliably protects the material from bacteria and thus guarantees long-lasting freshness. With collar and three-button tape on men's shirt. The women's model has a four-button tape. Women's and men's shirts are cut slim fit, so figure-hugging.

95% cotton, 5% spandex. 40 °C wash.

Back length women: 67 cm at size S.

Back length men: 74 cm at size M.

■ Color: white, rosé, black

■ Size women: XS, S, M, L, XL, 2XL

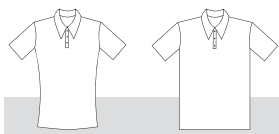
■ Size men: S, M, L, XL, 2XL, 3XL

Short sleeve women 125091

Piece: 29,99

Short sleeve men 124896

Piece: 29,99



▶ all colors p. 47



### 2 Apron Sun

Apron made of light, modern denim. With two-part large pocket on the belly with pen loop and tea towel loop on the right side.

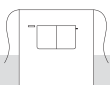
100% cotton (denim). 40 °C wash.

■ Color: light denim

■ Size: 50x85 cm (l x w)

50x85 cm (l x w) 124927

Piece: 24,99



### 3 Bib apron Sun

Bib apron made of light, modern denim with adjustable neckband. Three-part pocket on the bib, two-part large pocket on the belly with pen loop and tea towel loop on the right side.

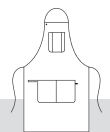
100% cotton (denim). 40 °C wash.

■ Color: light denim

■ Size: 82x85 cm (l x w)

82x85 cm (l x w) 124920

Piece: 29,99



### 4 Jeans Jaden

Jeans with modern washing for men and women with slightly tapering leg and modern cut. Five-pocket style: 2 round front pockets, 2 patch back pockets, coin pocket in the right front pocket. 5 belt loops. Zipper in front center.

99% cotton (denim), 1% spandex. 40 °C wash.

Inseam length women: 77 cm at size 36.

Inseam length men: 82 cm at size 50.

■ Color: dark grey

■ Size women: 34, 36, 38, 40, 42, 44, 46

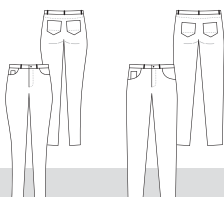
■ Size men: 44, 46, 48, 50, 52, 54, 56, 58, 60

Women 124908

Piece: 49,99

Men 124912

Piece: 49,99



▶ all colors p. 81



Jeans  
Jaden  
Piece only

49<sup>99</sup>



# FACT OF COOLNESS

**NEW  
COLLECTION**

A special coating as well as the removable snap hooks of the bib apron are responsible for the special look of apron Ben. Pleasant side effect of the snap hooks: You can easily and simply wash the apron.



Women

- Women's blouse long sleeve: Sleeves to roll up, fixed with a bar with button
- Particularly easy to care and easy to iron

1



Men

1



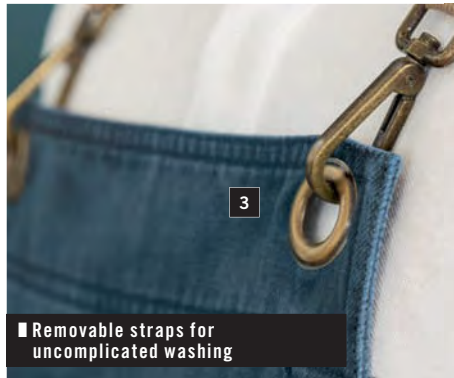
- Crossed straps in the back for optimal relief of the neck
- Individually and easily adjustable for each body height

3



2

- With large pockets, suitable for mini tablet (24 x 17 cm, h x w)
- Practical loop for tea towels on the side



3

- Removable straps for uncomplicated washing



Women

Men

4

- With share of spandex for optimal freedom of movement
- Modern fit



### 1 Blouse/Shirt Kim

Blouse and shirt with chest pocket. Modern cut, available in many colors, with short or long sleeves. The women's model is cut slightly waisted. The women's blouse with long sleeves has roll-up sleeves for changing to 3/4 sleeves. The material is particularly easy to care and easy to iron.

65% cotton, 35% polyester. 40 °C wash.

Back length women: 68 cm at size 36.

Back length men: 80 cm at size 39/40.

■ Color: white, olive, navy, black

■ Size women: 34, 36, 38, 40, 42, 44, 46, 48, 50

■ Size men: 37/38, 39/40, 41/42, 43/44, 45/46

|                    |        |              |
|--------------------|--------|--------------|
| Short sleeve women | 124885 | Piece: 28,99 |
| Long sleeve women  | 124886 | Piece: 29,99 |
| Short sleeve men   | 124890 | Piece: 28,99 |
| Long sleeve men    | 124894 | Piece: 29,99 |



▶ all colors  
p. 57

### 2 Apron Ben

Apron, which gets a cool look due to a high-quality coating. The contrasting straps at the waist are fastened with rivets. With tea towel loop, pen loop and two-part pocket in the front, which provides space for a mini tablet.

60% cotton, 36% polyester, 4% polyurethane. 40 °C wash.

■ Color: blue, dark brown

■ Size: 50x80 cm (l x w)

50 x 80 cm (l x w) 124921 Piece: 24,99



### 3 Bib apron Ben

Bib apron, which gets a cool look due to a high-quality coating. The fabric straps are fastened with snap hooks and can be easily removed for washing. The straps are crossed in the back to relieve the neck. With tea towel loop, pen loop and two-part pocket in the front, which provides space for a mini tablet.

60% cotton, 36% polyester, 4% polyurethane. 40 °C wash.

■ Color: blue, dark brown

■ Size: 88x77 cm (l x w)

88 x 77 cm (l x w) 124915 Piece: 29,99



### 4 Jeans Jaden

Jeans with modern washing for men and women with slightly tapering leg and modern cut. Five-pocket style: 2 round front pockets, 2 patch back pockets, coin pocket in the right front pocket. 5 belt loops. Zipper in front center.

99% cotton (denim), 1% spandex. 40 °C wash.

Inseam length women: 77cm at size 36.

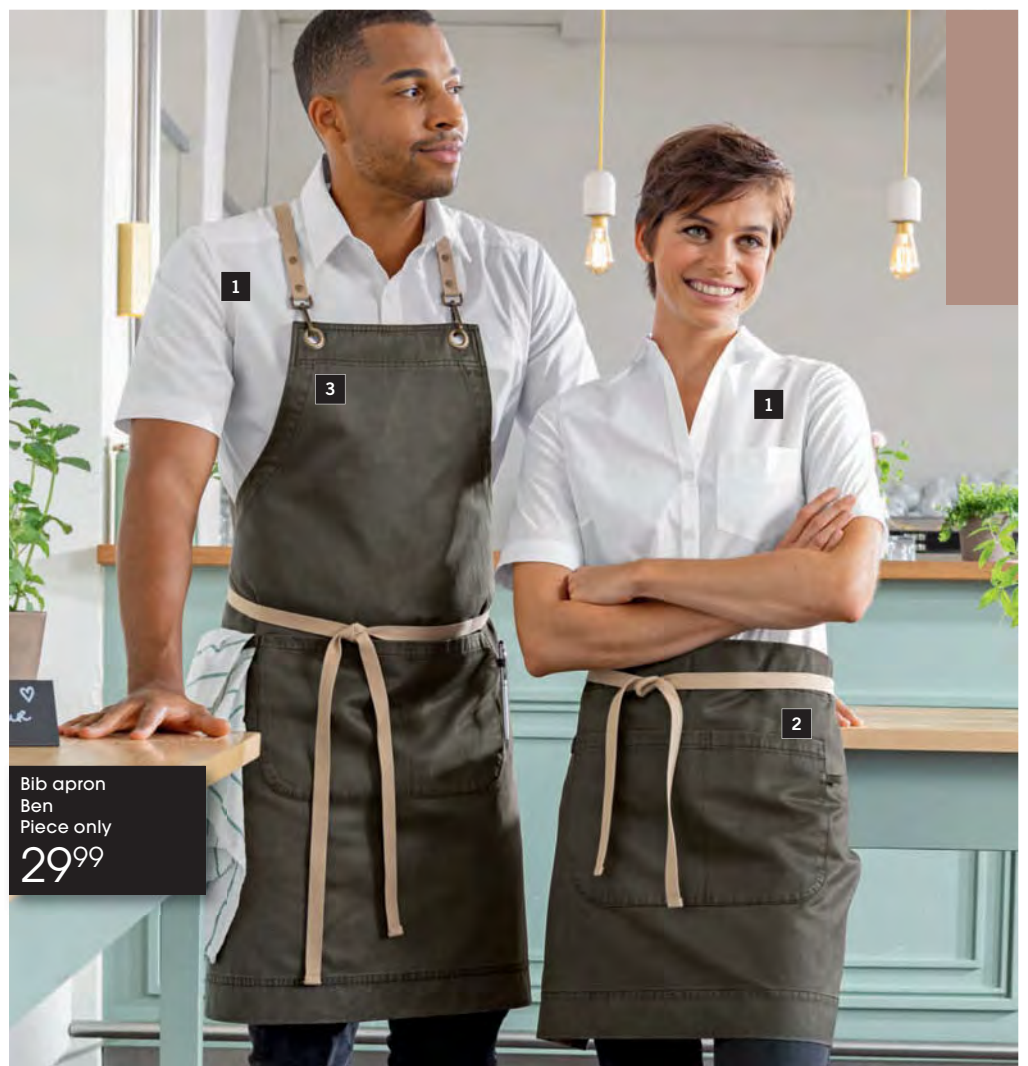
Inseam length men: 82 cm at size 50.

■ Color: blue, dark grey

■ Size women: 34, 36, 38, 40, 42, 44, 46

■ Size men: 44, 46, 48, 50, 52, 54, 56, 58, 60

|       |        |              |
|-------|--------|--------------|
| Women | 124908 | Piece: 49,99 |
| Men   | 124912 | Piece: 49,99 |





# CASUAL & FUNCTIONAL

Good service clothing can be hardly felt when you wear it. Like bib apron Botero which is equipped with crossed straps to relieve the neck. And combined with a shirt or blouse, it also looks super casual.

**NEW  
COLLECTION**



Women

- With trendy bow on neckline of the blouse
- Easy to care and easy to iron
- Real denim in modern washing



Men



- With large pockets, suitable for a mini tablet (24 x 17 cm, h x w)
- Practical loop at the side for tea towels
- Available in 18 great colors (p.23)



sand      taupe      black



Apron Botero is now available in new sizes!



- Removable strap, fixed with a loop under the collar



Men

► Jeans Dover  
p. 81

Women

SERVICE



### 1 Blouse/Shirt Jean

Slightly waisted women's blouse and men's shirt made of real denim. With two breast pockets with button closure. The waisted women's blouse has a removable band under the collar.

100% cotton (denim). 40 °C wash.

Back length women: 69 cm at size 36.

Back length men: 74 cm at size 39/40.

■ Color: dark blue

■ Size women: 34, 36, 38, 40, 42, 44, 46, 48, 50

■ Size men: 37/38, 39/40, 41/42, 43/44, 45/46, 47/48

Long sleeve women 124907

Piece: 44,99

Long sleeve men 124911

Piece: 44,99



Bib apron Botero  
Piece only  
**10<sup>99</sup>**  
from 20 pieces\*

### 2 Apron Botero

High-quality apron made of durable and easy-iron blended fabric, with firm fabric straps.

65% polyester, 35% cotton. 60 °C wash.

■ Color: sand, taupe, black

■ Size: 45x80 cm (l x w), 45x100 cm (l x w) **NEW**

60x80 cm (l x w), 60x100 cm (l x w) **NEW**

85x100 cm (l x w), 95x100 cm (l x w),

95x120 cm (l x w)

45x80 cm (l x w) 100654 Piece: 6,49

45x100 cm (l x w) 124717 Piece: 6,99

60x80 cm (l x w) 119284 Piece: 7,49

60x100 cm (l x w) 124718 Piece: 7,99

85x100 cm (l x w) 119281 Piece: 8,49

95x100 cm (l x w) 119282 Piece: 9,49

95x120 cm (l x w) 119283 Piece: 10,49

**NEW - Buy more. Save more.**

|           | from 10 pieces*        | from 20 pieces*        |
|-----------|------------------------|------------------------|
| 45x80 cm  | 5,49                   | 4,49                   |
| 45x100 cm | 5,99                   | 4,99                   |
| 60x80 cm  | 6,49                   | 5,49                   |
| 60x100 cm | 6,99                   | 5,99                   |
| 85x100 cm | 7,49                   | 6,49                   |
| 95x100 cm | 8,49                   | 7,49                   |
| 95x120 cm | 9,49                   | 8,49                   |
|           | <b>Save up to 15%!</b> | <b>Save up to 30%!</b> |

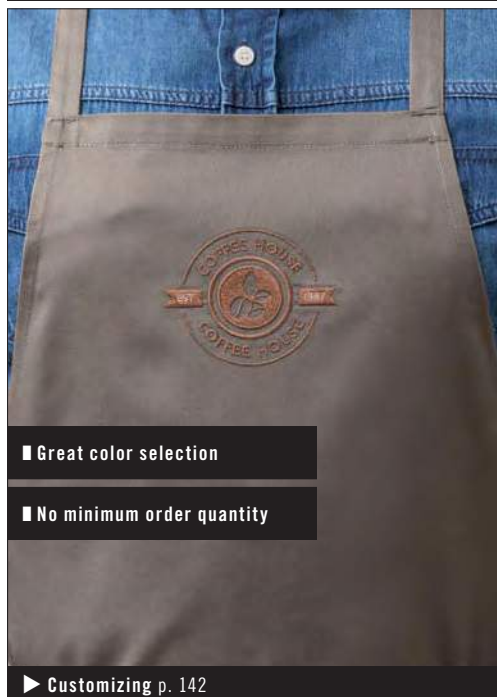
\*if same color



▶ all colors p. 23



### PERFECT FOR YOUR EMBROIDERY



■ Great color selection

■ No minimum order quantity

▶ Customizing p. 142



■ Crossed straps in the back for optimal relief of the neck

■ Individually and easy adjustable for each body size

### 3 Bib apron Botero

High-quality apron made of durable and easy-iron blended fabric. The straps can be crossed in the back to relieve the neck. With tea towel loop, pen loop and two large pockets in the front. A mini tablet can be placed in the right front pocket. Available in numerous colors.

65% polyester, 35% cotton. 60 °C wash.

■ Color: sand, taupe, black

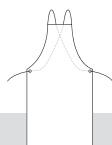
■ Size: 88x77 cm (l x w)

88x77 cm (l x w) 124906 Piece: 12,99

**NEW - Buy more. Save more.**

|  | from 10 pieces* | from 20 pieces*  |
|--|-----------------|------------------|
|  | 11,99           | 10,99            |
|  | <b>Save 7%!</b> | <b>Save 15%!</b> |

\*if same color



▶ all colors p. 23





COOL PRINTS



Bib apron  
Pepe Veggie  
Piece only  
**14<sup>99</sup>**

▶ Jeans Jaden p. 81



Bib apron  
Pepe  
Piece only  
**14<sup>99</sup>**



Bib apron  
Poca  
Piece only  
**14<sup>99</sup>**



**NEW  
COLLECTION**



1



2



3



4

■ Adjustable neckband

■ Easy to iron

■ Adjustable neckband

■ Easy to iron

■ Adjustable neckband

■ Easy to iron

■ Adjustable neckband

■ Easy to iron

**1 Bib apron Pepe Veggie**

Bib apron with vegetable printing. The neckband can be adjusted with snap buttons to five different lengths. Available in two colors. To enjoy the printing for a long time, please iron the bib apron on the inside.

65% polyester, 35% cotton. 60 °C wash.

■ Color: moss green, black

■ Size: 88x77 cm (l x w)

88x77 cm (l x w)

124901

Piece: 14,99

**3 Bib apron Pepe**

Black bib apron with printed rooster, pig and cow. The neckband can be adjusted with snap buttons to five different lengths. Available in two colors. To enjoy the printing for a long time, please iron the bib apron on the inside.

65% polyester, 35% cotton. 60 °C wash.

■ Color: black

■ Size: 88x77 cm (l x w)

88x77 cm (l x w)

120239

Piece: 14,99

**4 Bib apron Poca**

Black bib apron with printed cow. The neckband can be adjusted with snap buttons to five different lengths. Available in two colors. To enjoy the printing for a long time, please iron the bib apron on the inside.

65% polyester, 35% cotton. 60 °C wash.

■ Color: black

■ Size: 88x77 cm (l x w)

88x77 cm (l x w)

120184

Piece: 14,99



**2 Bib apron Pepe Gourmet**

Black bib apron with delicacies print – from wine to shrimps. The neckband can be adjusted with snap buttons to five different lengths. Available in two colors. To enjoy the printing for a long time, please iron the bib apron on the inside.

65% polyester, 35% cotton. 60 °C wash.

■ Color: black

■ Size: 88x77 cm (l x w)

88x77 cm (l x w)

124900

Piece: 14,99



# APRONS & BIB APRONS



ALL-ROUNDER APRONS

NEW  
COLLECTION

Your logo could be placed here!

2

Apron  
Bofero  
Piece from

449

from 20 pieces\*

1

■ Hard-wearing & durable material

■ Easy to iron

■ Available in many sizes and colors

Bib apron  
Bofero  
Piece only

1099

from 20 pieces\*

► Blouse & Shirt Jean p. 53, Jeans Jaden p. 81



# OUR BESTSELLERS IN PRICE AND PERFORMANCE



45x80 cm 45x100 cm 60x80 cm 60x100 cm 85x100 cm 95x100 cm 95x120 cm

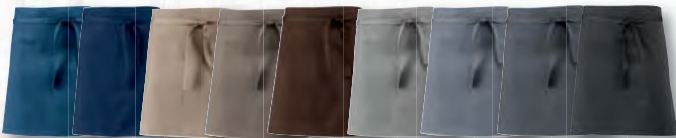
■ With large pockets, suitable for mini tablet (24 x 17 cm, h x w)



white mango red bordeaux blackberry apple green moss green olive dark blue



white mango red bordeaux blackberry apple green moss green olive



dark blue navy sand taupe coca light grey grey graphite black

navy sand taupe coca light grey grey graphite black black/white (herringbone)

**!** Apron Botero is now also available in a new width of 100 cm.

## 1 Apron Botero

High-quality apron made of robust and easy-iron blended fabric, with firm fabric straps.

65% polyester, 35% cotton. 60 °C wash.

■ Color: white, mango, red, bordeaux, blackberry, apple green, moss green, olive **NEW**, dark blue **NEW**, navy, sand, taupe, coca, light grey **NEW**, grey, graphite, black

■ Size: 45x80 cm (l x w), 45x100 cm (l x w) **NEW**, 60x80 cm (l x w), 60x100 cm (l x w) **NEW**, 85x100 cm (l x w), 95x100 cm (l x w), 95x120 cm (l x w)

|                   |        |              |
|-------------------|--------|--------------|
| 45x80 cm (l x w)  | 100654 | Piece: 6,49  |
| 45x100 cm (l x w) | 124717 | Piece: 6,99  |
| 60x80 cm (l x w)  | 119284 | Piece: 7,49  |
| 60x100 cm (l x w) | 124718 | Piece: 7,99  |
| 85x100 cm (l x w) | 119281 | Piece: 8,49  |
| 95x100 cm (l x w) | 119282 | Piece: 9,49  |
| 95x120 cm (l x w) | 119283 | Piece: 10,49 |

**NEW - Buy more. Save more.**

|           | from 10 pieces*        | from 20 pieces*        |
|-----------|------------------------|------------------------|
| 45x80 cm  | 5,49                   | 4,49                   |
| 45x100 cm | 5,99                   | 4,99                   |
| 60x80 cm  | 6,49                   | 5,49                   |
| 60x100 cm | 6,99                   | 5,99                   |
| 85x100 cm | 7,49                   | 6,49                   |
| 95x100 cm | 8,49                   | 7,49                   |
| 95x120 cm | 9,49                   | 8,49                   |
|           | <b>Save up to 15%!</b> | <b>Save up to 30%!</b> |

\*if same color



## 2 Bib apron Botero & Botero Herringbone

High-quality bib apron made of robust and easy-iron blended fabric. The straps can be crossed in the back to relieve the neck. With tea towel loop, pen loop and two large pockets in the front. A mini tablet can be placed in the right front pocket. Available in numerous colors.

Plain: 65% polyester, 35% cotton. 60 °C wash.

Herringbone: 100% cotton. 60 °C wash.

■ Color: white, mango, red, bordeaux, blackberry, apple green, moss green, olive, dark blue, navy, sand, taupe, coca, light grey, grey, graphite, black, black/white (herringbone)

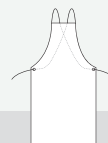
■ Size: 88x77 cm (l x w)

|                               |        |              |
|-------------------------------|--------|--------------|
| Plain: 88x77 cm (l x w)       | 124906 | Piece: 12,99 |
| Herringbone: 88x77 cm (l x w) | 124899 | Piece: 16,99 |

**NEW - Buy more. Save more.**

|                 | from 10 pieces* | from 20 pieces*  |
|-----------------|-----------------|------------------|
| Plain: 88x77 cm | 11,99           | 10,99            |
|                 | <b>Save 7%!</b> | <b>Save 15%!</b> |

\*if same color



■ Perfect for your embroidery



► Customizing p. 142





COMBINATION WONDER



Apron  
Nando  
Piece from  
**549**  
from 20 pieces\*

Bib apron  
Nando  
Piece from  
**899**  
from 20 pieces\*

- Large pockets with great storage space
- Available in 17 colors
- One series, 7 different sizes for each model

► Polo shirt Oliver p. 47, Jeans Jaden p. 81



# OUR BESTSELLERS IN PRICE AND PERFORMANCE

!

Apron and bib apron Nando are now also available in new width of 100 cm.

QUANTITY DISCOUNT



**NEW COLORS**

1



45x80 cm    45x100 cm    60x80 cm    60x100 cm    85x100 cm



white    mango    red    bordeaux    blackberry    apple green



moss green    olive    dark blue    navy    sand    taupe



coca    light grey    grey    graphite    black    denim



white    mango    red



bordeaux    blackberry    apple green    moss green    olive    dark blue    navy



sand    taupe    coca    light grey    grey    graphite    black

## 1 Apron Nando

High-quality apron made of robust and easy-iron blended fabric, with 2-part front pocket, 2 pen pockets and fabric straps.

**Colored: 65% polyester, 35% cotton. 60 °C wash.**

**Denim: 100% cotton (denim). 40 °C wash.**

■ **Color:** white, mango, red, bordeaux, blackberry, apple green, moss green, olive **NEW**, dark blue **NEW**, navy, sand, taupe, coca, light grey **NEW**, grey, graphite, black, denim

■ **Size:** 45x80 cm (l x w), 45x100 cm (l x w) **NEW**, 60x80 cm (l x w), 60x100 cm (l x w) **NEW**, 85x100 cm (l x w)

|                            |        |              |
|----------------------------|--------|--------------|
| Colored: 45x80 cm (l x w)  | 100865 | Piece: 7,49  |
| Colored: 45x100 cm (l x w) | 124719 | Piece: 7,99  |
| Colored: 60x80 cm (l x w)  | 119290 | Piece: 8,49  |
| Colored: 60x100 cm (l x w) | 124720 | Piece: 8,99  |
| Colored: 85x100 cm (l x w) | 119289 | Piece: 9,49  |
| Denim: 45x80 cm (l x w)    | 120085 | Piece: 15,99 |
| Denim: 60x80 cm (l x w)    | 120084 | Piece: 16,99 |

## 2 Bib apron Nando

High-quality bib apron made of robust and easy-iron blended fabric, with adjustable neckband due to snap buttons, 2-part front pocket and 2 pen pockets.

**65% polyester, 35% cotton. 60 °C wash.**

■ **Color:** white, mango, red, bordeaux, blackberry, apple green, moss green, olive **NEW**, dark blue **NEW**, navy, sand, taupe, coca, light grey **NEW**, grey, graphite, black

■ **Size:** 88x77 cm (l x w), 88x100 cm (l x w) **NEW**

|                   |        |              |
|-------------------|--------|--------------|
| 88x77 cm (l x w)  | 117561 | Piece: 10,99 |
| 88x100 cm (l x w) | 124716 | Piece: 11,99 |

**NEW - Buy more. Save more.**

|                    | from 10 pieces*                         | from 20 pieces*         |
|--------------------|---|-------------------------|
| Colored: 45x80 cm  | 6,49                                    | 5,49                    |
| Colored: 45x100 cm | 6,99                                    | 5,99                    |
| Colored: 60x80 cm  | 7,49                                    | 6,49                    |
| Colored: 60x100 cm | 7,99                                    | 6,99                    |
| Colored: 85x100 cm | 8,49                                    | 7,49                    |
|                    | <b>Save up to 13%! Save up to 26%!*</b> | <b>Save up to 26%!*</b> |

\*if same color



colored:



denim:



**NEW - Buy more. Save more.**

|           | from 10 pieces*                        | from 20 pieces*         |
|-----------|--|-------------------------|
| 88x77 cm  | 9,99                                   | 8,99                    |
| 88x100 cm | 10,99                                  | 9,99                    |
|           | <b>Save up to 9%! Save up to 18%!*</b> | <b>Save up to 18%!*</b> |

\*if same color



EASY





▶ p. 47

Bib apron  
Lionel  
Piece from

8,99

from 20 pieces\*



▶ p. 47

Bib apron  
Faro  
Piece only

7,99

from 20 pieces\*

## VARIETY OF COLORS



**NEW  
COLORS**



■ Neckband with clip for adjusting

■ Large pockets on the belly

■ 2 pen pockets on the bib

■ Two pen pockets and one pocket on the inside of the bib

■ Adjustable neckband

■ Easy to iron



Bib apron Lionel is now also available with a width of 100 cm.

### 1 Bib apron Lionel

Bib apron made of robust and easy-iron blended fabric, with clip on neckband for universally adjustable width and outer pen and belly pocket.

65% polyester, 35% cotton. 60 °C wash.

■ Color: mango, red, bordeaux, blackberry, apple green, olive **NEW**, dark blue **NEW**, taupe, coca, light grey **NEW**, grey, graphite, black

■ Size: 88x77 cm (l x w), 88x100 cm (l x w) **NEW**

88x77 cm (l x w) 101003 Piece: 10,99  
88x100 cm (l x w) 124715 Piece: 11,99

**NEW - Buy more. Save more.**

|           | from 10 pieces*       | from 20 pieces*        |
|-----------|-----------------------|------------------------|
| 88x77 cm  | 9,99                  | 8,99                   |
| 88x100 cm | 10,99                 | 9,99                   |
|           | <b>Save up to 9%!</b> | <b>Save up to 18%!</b> |

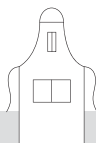
\*if same color



mango red bor-  
deaux black-  
berry apple  
green olive dark blue taupe coca



light grey grey graph-  
ite black



### 2 Bib apron Faro

Bib apron with adjustable neckband, 1 inner pocket and 2 patch pen pockets.

65% polyester, 35% cotton. 60 °C wash.

■ Color: white, mango, red, bordeaux, blackberry, apple green, moss green, olive **NEW**, dark blue **NEW**, navy, taupe, coca, light grey **NEW**, grey, black

■ Size: 98x77 cm (l x w)

98x77 cm (l x w) 100491 Piece: 9,99

**NEW - Buy more. Save more.**

|  | from 10 pieces*  | from 20 pieces*  |
|--|------------------|------------------|
|  | 8,99             | 7,99             |
|  | <b>Save 10%!</b> | <b>Save 20%!</b> |

\*if same color



white mango red bor-  
deaux black-  
berry apple  
moss green olive dark  
navy



taupe coca light grey grey black







**Apron  
Taglio**  
Piece from  
**7<sup>99</sup>**  
from 20 pieces\*

**Bib apron  
Taras**  
Piece only  
**6<sup>99</sup>**  
from 20 pieces\*



85x100 cm

95x100 cm

95x120 cm

3

- Practical walking slit for optimal freedom of movement
- Easy to iron
- Available in 3 sizes

**NEW  
COLORS**



4

- Adjustable neckband
- Practical large pockets

**3 Apron Taglio**

High-quality apron made of robust and easy-iron blended fabric, with fabric straps, walking slit for optimal freedom of movement.

65% polyester, 35% cotton. 60 °C wash.

■ Color: white, red, bordeaux, blackberry, apple green, sand, taupe, coca, grey, graphite, black

■ Size: 85x100 cm (l x w), 95x100 cm (l x w), 95x120 cm (l x w)

|                   |        |              |
|-------------------|--------|--------------|
| 85x100 cm (l x w) | 100399 | Piece: 10,49 |
| 95x100 cm (l x w) | 119296 | Piece: 11,49 |
| 95x120 cm (l x w) | 119297 | Piece: 12,49 |

**4 Bib apron Taras**

Short bib apron made of robust and easy-iron blended fabric, with 3-part front pocket, fabric straps and adjustable neckband.

Colored: 65% polyester, 35% cotton. 60 °C wash.

Denim: 100% cotton (denim). 40 °C wash.

■ Color: white, mango, red, bordeaux, blackberry, apple green, olive **NEW**, dark blue **NEW**, taupe, coca, light grey **NEW**, grey, black, denim

|                           |        |              |
|---------------------------|--------|--------------|
| ■ Size: 64x75 cm (l x w)  |        |              |
| Colored: 64x75 cm (l x w) | 100492 | Piece: 8,99  |
| Denim: 64x75 cm (l x w)   | 118746 | Piece: 19,99 |

**NEW - Buy more. Save more.**

|           | from 10 pieces*        | from 20 pieces*        |
|-----------|------------------------|------------------------|
| 85x100 cm | 8,99                   | 7,99                   |
| 95x100 cm | 9,99                   | 8,99                   |
| 95x120 cm | 10,99                  | 9,99                   |
|           | <b>Save up to 14%!</b> | <b>Save up to 23%!</b> |

\*if same color



**NEW - Buy more. Save more.**

|                   | from 10 pieces*  | from 20 pieces*  |
|-------------------|------------------|------------------|
| Colored: 64x75 cm | 7,99             | 6,99             |
|                   | <b>Save 11%!</b> | <b>Save 22%!</b> |

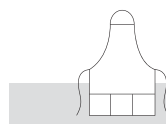
\*if same color



**Perfect for your embroidery**



► Customizing p. 142





## TOP PRODUCT

Bib apron  
Ben  
Piece only  
29<sup>99</sup>

2

1

- Bib apron: Crossed straps in the back relieve your neck optimally
- Lightweight fabric for optimal wearing comfort during the whole day
- Practical loop on the side for tea towels or similar accessories

► Polo shirt Oliver p. 47

■ Cool look due to slight coating

► More information at [www.em-group.com](http://www.em-group.com)



Casual, stylish, easy-care: This is apron Ben, which is available as apron and bib apron. Why does Ben look so cool? A special coating gives this apron its special look.

**NEW  
COLLECTION**

■ With large pockets, suitable for a mini tablet (24 x 17 cm, h x w)



1



2

■ Crossed straps in the back relieve the neck

### 1 Apron Ben

Apron with a cool look due to a high-quality coating. The contrasting straps at the waist are fastened with rivets. With tea towel loop, pen loop and a two-part pocket in the front, which provides space for a mini tablet.

■ 60% cotton, 36% polyester, 4% polyurethane. 40 °C wash.

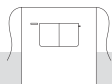
■ Color: blue, dark brown

■ Size: 50x80 cm (l x w)

50x80 cm (l x w)

124921

Piece: 24,99



### 2 Bib apron Ben

Bib apron with a cool look due to a high-quality coating. The fabric straps are fastened with snap hooks and can be easily removed for washing. The straps are crossed in the back to relieve the neck. With tea towel loop, pen loop and two-part pocket in the front that provides space for a mini tablet.

■ 60% cotton, 36% polyester, 4% polyurethane. 40 °C wash.

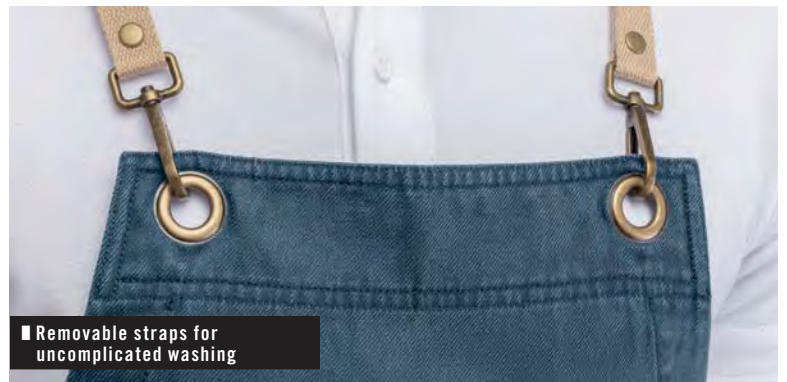
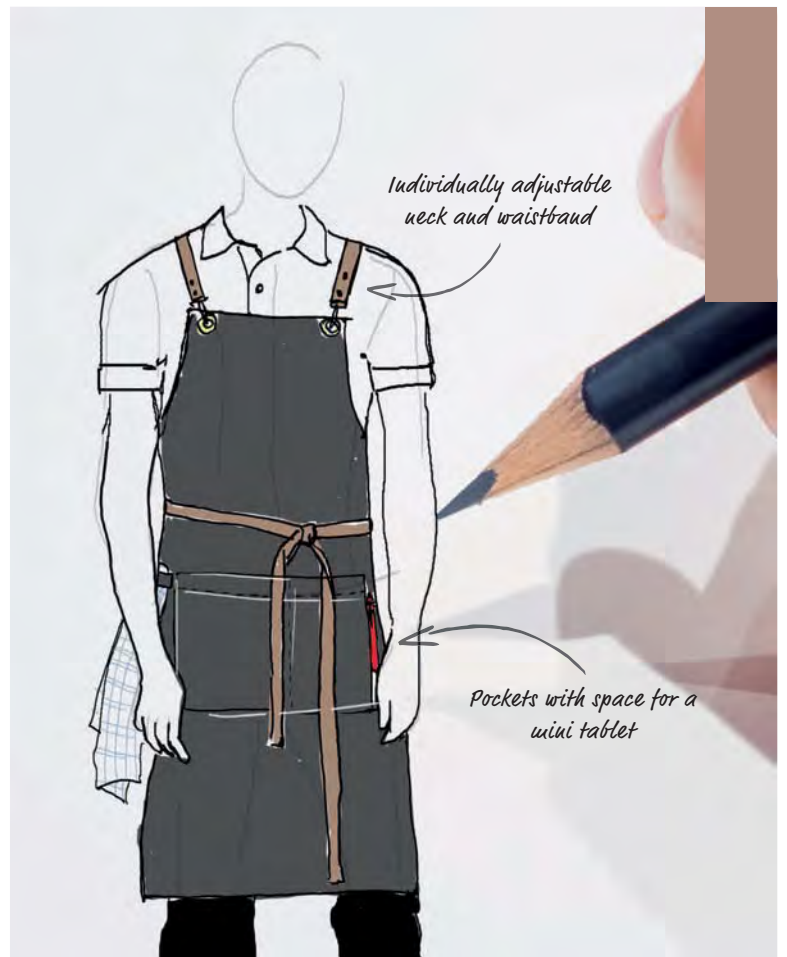
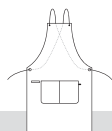
■ Color: blue, dark brown

■ Size: 88x77 cm (l x w)

88x77 cm (l x w)

124915

Piece: 29,99



■ Removable straps for uncomplicated washing



■ Large pockets & tea towel loop



## YOUR BENEFIT WITH BEN

- Robust cotton straps with snap hooks: Simply remove them to wash the apron
- Crossed straps to relieve the neck and high wearing comfort at the daily work



# MATERIAL MIX

PERMANENTLY  
REDUCED  
IN PRICE!



45x80 cm      60x80 cm

### 1 Bib apron Taras

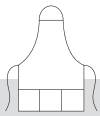
Short bib apron with 3-part front pocket and adjustable neckband. In real denim with beige grosgrain ribbons.

100% cotton (denim). 40 °C wash.

■ Color: denim

■ Size: 64x75 cm (l x w)

64x75 cm (l x w)      118746      Piece: 19,99



### 2 Apron Nando

Apron made of denim with 2-part front pocket, 2 pen loops and narrow grosgrain ribbons on the waist.

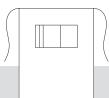
100% cotton (denim). 40 °C wash.

■ Color: denim

■ Size: 45x80 cm (l x w), 60x80 cm (l x w)

45x80 cm (l x w)      120085      Piece: 15,99

60x80 cm (l x w)      120084      Piece: 16,99



Bib apron  
Lenox  
Piece only  
49<sup>99</sup>



■ Real denim gets its unique Used-Look over time

■ Tea towel loop on the side

### 3 Bib apron Lenox

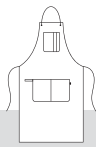
High-quality, robust bib apron made of denim with neckband and waistband made of real leather. With two large pockets, pen loop and tea towel loop on the belly and a pocket and two pen pockets on the bib. Neckband and waistband are individually adjustable. You can wash the bib apron uncomplicated by easily removing the leather straps.

100% cotton. 40 °C wash.

■ Color: denim

■ Size: 88x77 cm (l x w)

88x77 cm (l x w)      120261      Piece: 49,99



Bib apron  
Dario  
Piece only  
49<sup>99</sup>



■ Removable real leather straps at neck and at waist

■ Matching to bib apron Taras Canvas

### 4 Bib apron Dario

High-quality, robust Canvas apron with neckband and waistband made of real leather. Three large pockets and two pen pockets on the belly. Neckband and waistband are individually adjustable. You can wash the apron uncomplicated by simply removing the leather straps.

100% cotton. 40 °C wash.

■ Color: sand, brown

■ Size: 88x77 cm (l x w)

88x77 cm (l x w)      120260      Piece: 49,99



sand      brown



■ Pocket and pen pocket on the bib

■ 2 large pockets & pen loop



■ Practical large pockets





**NEW  
COLLECTION**

5

- Large 3-part front pockets
- Adjustable neckband
- Easy to iron



6

Apron  
Bristol  
Piece only  
**89,99**

- High-quality, real cowhide: Naturally and uncoated for a unique Used-Look
- Becomes softer and more individual over time
- Easy cleaning with common leather care products
- Neck and waistband are adjustable in width due to belt loops



7

8

### 5 Bib apron Taras Canvas

Short bib apron made of high-quality, robust Canvas with 3-part front pocket and narrow grosgrain ribbons at the waist and neck. Neckband is adjustable in length.

100% cotton. 40 °C wash.

■ Color: sand, brown

■ Size: 75x64 cm (l x w)

64x75 cm (l x w)

124284

Piece: 29,99

### 6 Bib apron Bristol

Cool, trendy and of course top quality: Apron made of brown leather in trendy Used-Look. Neck and waistband are adjustable so that the apron fits perfectly. Practical details: Two-part pen pocket on the chest, two belly pockets, pen loop and tea towel loop - so you have everything you need close at hand.

100% leather.

■ Color: brown

■ Size: 88x77 cm (l x w)

88x77 cm (l x w)

120079

Piece: 149,00

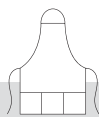
- High-quality, real cowhide with coating: Keeps its clean look, no permanent stains or scratches

- Quick and easy wipeable

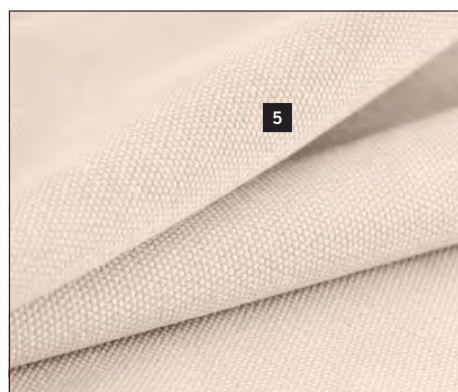
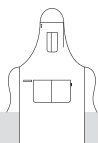
- Neck and waistband are adjustable in width due to belt loops

- 2-part chest pocket and 2 large pockets on the belly

! Each apron is unique! Therefore, slight color variations are possible.



sand brown



5

■ High-quality & durable cotton fabric

### 7 Apron Bristol

Cool, trendy and of course top quality: Apron made of brown leather in trendy Used-Look. Neck and waistband are adjustable so that the apron fits perfectly. Practical details: Two belly pockets, pen loop and tea towel loop - so you have everything you need close at hand.

100% leather.

■ Color: brown

■ Size: 45x80 cm (l x w)

45x80 cm (l x w)

124286

Piece: 89,99

! Each apron is unique! Therefore, slight color variations are possible.



### 8 Bib apron Dakota

Apron made of brown leather. Neck and waistband are adjustable so that the apron fits perfectly. Practical details: Two-part pen pocket on the chest, two belly pockets, pen loop and tea towel loop - so you have everything you need close at hand.

100% leather.

■ Color: brown

■ Size: 88x77 cm (l x w)

88x77 cm (l x w)

120110

Piece: 99,99



## ROBUST COOLNESS

Bib apron  
Miko  
Piece only  
**29,99**

▶ p. 58

1

1

■ Adjustable neckband

■ 2 pockets on the side

■ Lightweight denim

■ Cool jeans look in 5-pocket style



■ Adjustable neckband

### 1 Bib apron Miko

Trendy bib apron in cool jeans look (real denim) with adjustable neckband, belt loops, 2 pockets on the side and a coin pocket with decorative stitching.

100% cotton (denim). 40 °C wash.

■ Color: denim

■ Size: 100x80 cm (l x w)

100x80 cm (l x w)

115578

Piece: 29,99

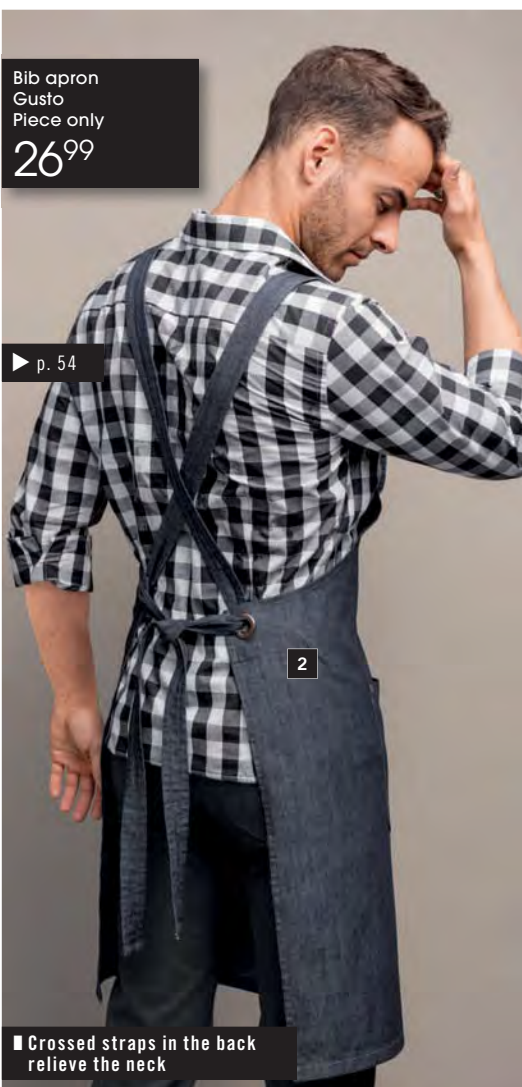






Bib apron  
Gusto  
Piece only  
**26<sup>99</sup>**

▶ p. 54



■ Crossed straps in the back relieve the neck



▶ p. 54

▶ Tie Bo slim p. 83



## RINSE WASHED

Rinse Washed denim has a clearer color, is softer and does not shrink so much. The reason is a special production process: The denim is neither bleached nor changed. Instead, the original color is made clearer with the help of clear water and softener. This creates the characteristic dark color of this denim.

Apron  
Melek  
Piece from  
**24<sup>99</sup>**

- Large, spacious pocket
- Lightweight denim



45x80 cm

60x80 cm

85x100 cm

### 2 Bib apron Gusto

Bib apron made of real denim with adjustable, crossed back straps to relieve the neck. Patch pocket, pen pocket and tea towel loop. **100% cotton (denim). 40 °C wash.**

■ Color: denim

■ Size: 88x77 cm (l x w)

88 x 77 cm (l x w)

117559

Piece: 26,99

### 3 Apron Melek

Apron in jeans look with 2-part front pocket including 2 pen pockets. **100% cotton (denim). 40 °C wash.**

■ Color: denim

■ Size: 45x80 cm (l x w), 60x80 cm (l x w), 85x100 cm (l x w)

45 x 80 cm (l x w)

115577

Piece: 24,99

60 x 80 cm (l x w)

119287

Piece: 25,99

85 x 100 cm (l x w)

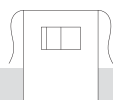
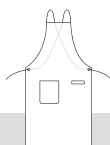
119288

Piece: 26,99

■ Perfect for your laser branding



▶ Customizing p. 142





## TOP PRODUCT

Apron  
Sun  
Piece only  
**24<sup>99</sup>**



1

2

■ Large pocket on the bib

■ Made of robust, real denim

■ Easy to care and easy to iron

► Polo shirt Oliver p. 47

► More information at [www.em-group.com](http://www.em-group.com)



Light denim is a true favorite on the catwalks - and in the service. The apron Sun implements this trend perfectly. With high wearing comfort and refined details especially for the gastronomy.

**NEW  
COLLECTION**

■ With large pockets, suitable for a mini tablet (24 x 17 cm, h x w)



1



2

**1 Apron Sun**

Apron made of light, modern denim. With large two-part belly pocket with pen loop and tea towel loop on the right side. 100% cotton (denim). 40 °C wash.

■ Color: light denim  
■ Size: 50x85 cm (l x w)

50x85 cm (l x w)

124927

Piece: 24,99



**2 Bib apron Sun**

Bib apron made of light, modern denim with adjustable neckband. Three-part pocket on the bib, two-part large belly pocket with pen loop and tea towel loop on the right side. 100% cotton (denim). 40 °C wash.

■ Color: light denim  
■ Size: 82x85 cm (l x w)

82x85 cm (l x w)

124920

Piece: 29,99



■ Individually adjustable neckband by eyelet



■ Large pockets incl. pen loop and tea towel loop



**YOUR BENEFIT  
WITH SUN**

High-quality denim with functional pockets:  
Like this, working is fun!



# CASUAL LIKE LINEN



Bib apron  
Mora  
Piece only  
**16<sup>99</sup>**

Apron  
Mora  
Piece only  
**12<sup>99</sup>**



■ Adjustable neckband by drawstring with wide straps

■ Large pockets

■ Easy to iron

■ Fast-drying

▶ Blouse Fiore & Shirt Noah p. 63



1+2

■ Great linen look

## 1 Bib apron Mora

Stylish and practical at the same time. Bib apron Mora looks like fashionable linen, but is made of soft, crease resistant and easy-care polyester. With two-part front pocket and two pen pockets. Individually adjustable neck and waistband in width and length by drawstring with wide straps.

**100% polyester. 60 °C wash.**

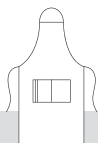
■ Color: sand, light grey

■ Size: 88 x 77 cm (l x w)

88 x 77 cm (l x w)

120076

Piece: 16,99



sand light grey

## 2 Apron Mora

This stylish apron looks like linen, but is made of polyester and thus soft, crease resistant and easy-care. The two-part front pocket and the pen pockets ensure that your utensils are always stored well and are close at hand.

**100% polyester. 60 °C wash.**

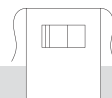
■ Color: sand, light grey

■ Size: 60 x 80 cm (l x w)

60 x 80 cm (l x w)

120077

Piece: 12,99



sand light grey

SERVICE



**NEW  
COLLECTION**



▶ p. 47



■ Crossed straps in the back relieve the neck optimally

■ With large pockets, suitable for a mini tablet (24 x 17 cm, h x w)

Apron  
Lore  
Piece from  
**12<sup>99</sup>**



45x80 cm

60x80 cm

85x100 cm

**3 Bib apron Lore**

Bib apron with fine blue/white woven stripes and beige grosgrain strap. Adjustable neckband with striped upper material, 2 patch pockets.

**100% cotton. 60 °C wash.**

■ Color: blue/white

■ Size: 78x80 cm (l x w)

78 x 80 cm (l x w)

117562

Piece: 16,99

**4 Apron Lore**

Apron with fine blue/white woven stripes and beige grosgrain strap.

**100% cotton. 60 °C wash.**

■ Color: blue/white

■ Size: 45x80 cm (l x w), 60x80 cm (l x w), 85x100 cm (l x w)

45 x 80 cm (l x w)

117557

Piece: 12,99

60 x 80 cm (l x w)

119285

Piece: 13,99

85 x 100 cm (l x w)

119286

Piece: 14,99

**5 Bib apron Botero herringbone**

High-quality bib apron with modern herringbone pattern. With crossed straps in the back to relieve the neck, two-part front pocket (the right one offers space for a mini tablet) and tea towel loop.

**100% cotton. 60 °C wash.**

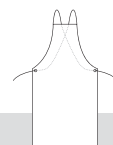
■ Color: black/white

■ Size: 88x77 cm (l x w)

88 x 77 cm (l x w)

124899

Piece: 16,99





## TOP PRODUCT

Apron  
Mora stripes  
Piece only

12<sup>99</sup>



■ Large, spacious pockets

■ Easy to iron

■ Hard-wearing material for long durability

► Blouse & Shirt Kim p. 57

► More information at [www.em-group.com](http://www.em-group.com)



Our customers love Mora! That's why the stylish apron is now also available with stripes. Of course, the excellent care properties of the apron and bib apron remain the same.

**NEW  
COLLECTION**



**1 Apron Mora stripes**

Stylish apron with trendy, woven stripes made of 100% cotton. The two-part front pocket and the pen pockets ensure that your utensils are always stored well and are close at hand.

**100% cotton. 60 °C wash.**

■ **Color:** light blue, anthracite

■ **Size:** 60x80 cm (l x w)

60 x 80 cm (l x w)

124922

Piece: 12,99



**2 Bib apron Mora stripes**

Bib apron with trendy, woven stripes made of 100% cotton. With two-part front pocket and two pen pockets. Individually adjustable neck and waistband in width and length by drawstring with wide straps.

**100% cotton. 60 °C wash.**

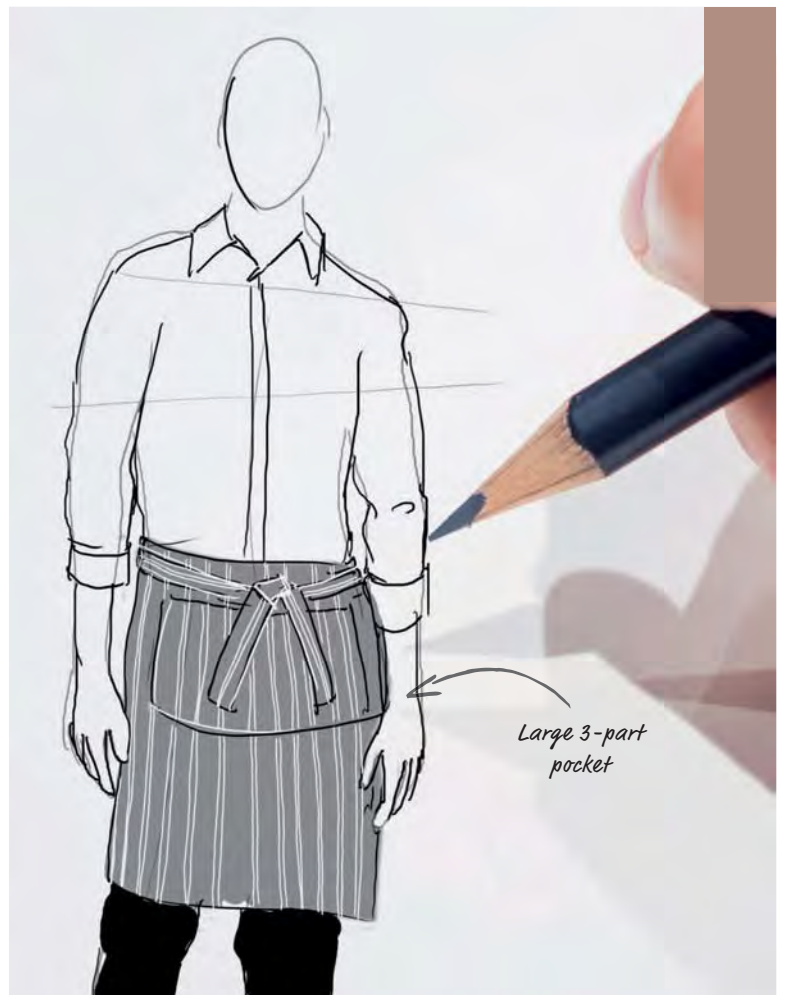
■ **Color:** light blue, anthracite

■ **Size:** 88x77 cm (l x w)

88 x 77 cm (l x w)

124916

Piece: 16,99



**YOUR BENEFIT  
WITH MORA STRIPES**

Neckband and waistband are adjustable by drawstring: Like this, the apron fits perfectly.



STRONG TOGETHER



▶ p. 59

▶ p. 61

▶ p. 60

Bib apron  
Pero  
Piece only  
**11<sup>99</sup>**

▶ p. 59

Bib apron  
Juno  
Piece only  
**14<sup>99</sup>**

2

5

4

1



▶ p. 59

Bib apron  
Hugo  
Piece only  
**12<sup>99</sup>**

■ Noble bib shape

■ Practical pocket

3

▶ p. 81



4

Apron  
Harris  
Piece from  
**7<sup>99</sup>**

▶ Sleeve holders p. 82





- Two pen pockets in the front and an inner bib pocket
- Adjustable neckband

1



- Many practical pockets
- Adjustable neckband

2



3



45x80 cm 60x80 cm 85x100 cm 95x100 cm 95x120 cm

4



45x80 cm 60x80 cm 85x100 cm 95x100 cm 95x120 cm

5

Apron Benito  
Piece from  
**10<sup>99</sup>**



**1 Bib apron Pero**

Striped bib apron with adjustable neckband, 2 patch pen pockets, an inner bib pocket and fabric straps.

100% cotton. 60 °C wash.

■ Color: black/white

■ Size: 98x77 cm (l x w)

98 x 77 cm (l x w)

100539

Piece: 11,99



**2 Bib apron Juno**

High-quality, striped bib apron with 2 pen pockets and 2 striped pockets.

100% cotton. 60 °C wash.

■ Color: black/white

■ Size: 88x77 cm (l x w)

88 x 77 cm (l x w)

100660

Piece: 14,99



**3 Bib apron Hugo**

Bib apron with front pocket.

100% cotton. 60 °C wash.

■ Color: black

■ Size: 88x77 cm (l x w)

88 x 77 cm (l x w)

100768

Piece: 12,99



**4 Apron Harris**

Striped apron with fabric straps.

100% cotton. 60 °C wash.

■ Color: black/white

■ Size: 45x80 cm (l x w), 60x80 cm (l x w), 85x100 cm (l x w), 95x100 cm (l x w), 95x120 cm (l x w)

45 x 80 cm (l x w)

100537

Piece: 7,99

60 x 80 cm (l x w)

119272

Piece: 8,99

85 x 100 cm (l x w)

119274

Piece: 9,99

95 x 100 cm (l x w)

119273

Piece: 10,99

95 x 120 cm (l x w)

119271

Piece: 11,99



**5 Apron Benito**

Striped apron with striped, 2-part pocket.

100% cotton. 60 °C wash.

■ Color: black/white

■ Size: 45x80 cm (l x w), 60x80 cm (l x w), 85x100 cm (l x w), 95x100 cm (l x w), 95x120 cm (l x w)

45 x 80 cm (l x w)

100937

Piece: 10,99

60 x 80 cm (l x w)

119280

Piece: 11,99

85 x 100 cm (l x w)

119279

Piece: 12,99

95 x 100 cm (l x w)

119278

Piece: 13,99

95 x 120 cm (l x w)

119277

Piece: 14,99





Bib apron Smoking  
Piece only  
**19<sup>99</sup>**

1



Apron James  
Piece from  
**12<sup>99</sup>**

3

► Blouse Delano p. 65

## BLACK & WHITE

Apron James  
Piece from  
**12<sup>99</sup>**



1



3

45x80 cm

60x80 cm

85x100 cm



2

60x80 cm, round



2

60x80 cm, straight

■ Fast-drying and easy to iron

■ Very hard-wearing and durable

■ 3 beautiful styles of one series, decorated with satin straps

### 1 Bib apron Smoking

Noble, black bib apron with lapel collar in elegant tuxedo style. With fabric straps and walking slit in tulip shape.

70% polyester, 27% viscose, 3% spandex. 40 °C wash.

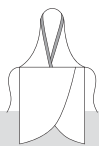
■ Color: black

■ Size: 106x85 cm (l x w)

106x85 cm (l x w)

124919

Piece: 19,99



### 3 Apron James

High-quality apron in elegant grey with modern pinstripe pattern. With firm fabric straps. Hard-wearing, easy to care and easy to iron.

80% polyester, 16% viscose, 4% spandex. 40 °C wash.

■ Color: grey

■ Size: 45x80 cm (l x w), 60x80 cm (l x w), 85x100 cm (l x w)

45x80 cm (l x w)

124903

Piece: 12,99

60x80 cm (l x w)

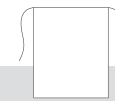
124904

Piece: 13,99

85x100 cm (l x w)

124905

Piece: 14,99



### 2 Apron Smoking

Noble black apron in round or straight version. The rounded model has a walking slit in tulip shape and a narrow satin piping below the waistband. The straight apron has a walking slit on the left leg, a narrow satin piping pocket on the right and patch black satin straps in tuxedo style on the right and left side seams.

70% polyester, 27% viscose, 3% spandex. 40 °C wash.

■ Color: black

■ Size: 60x80 cm (l x w)

60x80 cm (l x w), round

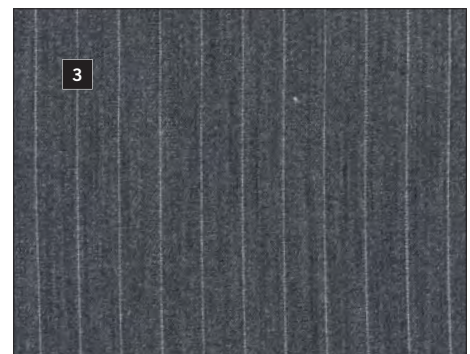
124926

Piece: 14,99

60x80 cm (l x w), straight

124925

Piece: 14,99



3

■ Woven pinstripes





4

- Noble lapel collar
- Easy care
- Woven stripes



5

- Adjustable neckband by press buttons
- Finely woven stripes
- Easy to iron



6

- Adjustable neckband by press buttons
- With bib pocket & tea towel loop
- Finely woven stripes



7

- With large pocket & tea towel loop
- Finely woven stripes

Bib apron  
Sonora  
Piece only  
**16<sup>99</sup>**

► Matching to chef jacket  
Pascal p. 97

#### 4 Vest apron Oslo

Bib apron with striped top and noble lapel collar. Lower part is plain.

65% polyester, 35% cotton. 60 °C wash.

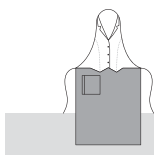
■ Color: bordeaux/white, black/white

■ Size: 110 x 85 cm (l x w)

110 x 85 cm (l x w)

117560

Piece: 29,99



#### 5 Vest apron Sonora

Bib apron with bib in fine vest-design. With a loop for tea towels. Neckband can be adjusted in two sizes by press buttons. In black with finely woven white stripes.

Black: 65% polyester, 35% cotton. 60 °C wash.

Striped: 100% cotton. 60 °C wash.

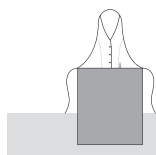
■ Color: black/white

■ Size: 106 x 85 cm (l x w)

106 x 85 cm (l x w)

120156

Piece: 19,99



#### 6 Bib apron Sonora

Bib apron with two-part pocket on the bib and loop for tea towels. Neckband can be adjusted in three sizes by press buttons. In black with finely woven white stripes.

Black: 65% polyester, 35% cotton. 60 °C wash.

Striped: 100% cotton. 60 °C wash.

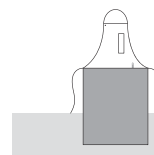
■ Color: black/white

■ Size: 88 x 77 cm (l x w)

88 x 77 cm (l x w)

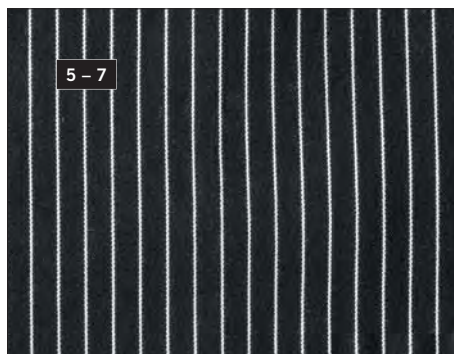
120154

Piece: 16,99



4

■ Patch pocket incl. pen pocket



5 - 7

■ Woven stripes

#### 7 Apron Sonora

Apron with large pocket and loop for tea towels. In black with finely woven white stripes.

Black: 65% polyester, 35% cotton. 60 °C wash.

Striped: 100% cotton. 60 °C wash.

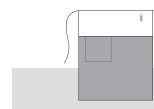
■ Color: black/white

■ Size: 60 x 80 cm (l x w)

60 x 80 cm (l x w)

120155

Piece: 12,99





## STAY FRESH



■ Sanitized® hygiene function reliably neutralizes odor

■ Easy care

► Apron Melek p. 33



**NEW**  
COLLECTION

Polo shirt  
Cato  
Piece only  
**24<sup>99</sup>**



## Efficiency from head to toe!

The hygiene function with which our polo shirts of series "Cato" are equipped guarantee freshness for the whole day, a better functionality for great performance and optimal wearing comfort.

Because Sanitized®:

- is save and permanent, even after intensive use,
- inhibits the reproduction of bacteria and thus the formation of unpleasant odors,
- ensures long freshness.

Thus unpleasant odors are no longer able to appear due to the Sanitized® hygiene function.



Polo shirt  
Cato  
Piece from  
**22<sup>99</sup>**

**NEW  
COLORS**

**NEW  
COLLECTION**



Men



Women



■ With 2 patch, large pockets

■ Sanitized® hygiene function reliably neutralizes odors

■ Extra long, comfortable length (covers buttocks)

Polo shirt  
Cato Comfort  
Piece only  
**26<sup>99</sup>**

**1 Polo shirt Cato**

Waisted polo piqué shirt for women and men in easy-care, crease-resistant cotton-spandex quality. The integrated Sanitized® hygiene function reliably protects the material from bacteria and thus guarantees permanent freshness. Flat knit cuffs on sleeves and collar, side slits. Women's shirt is available in short and 3/4 sleeve.

95% cotton, 5% spandex. 40 °C wash.

Back length women: 60 cm at size S.

Back length men: 71 cm at size M.

■ Color short sleeve: white, cream white **NEW**, vanilla **NEW**, rosé **NEW**, red **NEW**, bordeaux, blackberry, apple green, olive **NEW**, navy, taupe, graphite, black

■ Color 3/4 sleeve: white, rosé, red, navy, black

■ Size women: XS, S, M, L, XL, 2XL

■ Size men: S, M, L, XL, 2XL, 3XL

Short sleeve women 101294

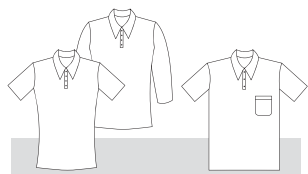
Piece: 22,99

3/4 sleeve women 124292

Piece: 24,99

Short sleeve men 101860

Piece: 22,99



white cream white vanilla rosé red bordeaux blackberry



apple green olive navy taupe graphite black



white rosé red navy black

**2 Polo shirt Cato Comfort**

Slightly waisted polo piqué shirt for women in easy-care, crease-resistant cotton-spandex quality. The integrated Sanitized® hygiene function reliably protects the material from bacteria and thus guarantees permanent freshness. Flat knit cuffs on sleeves and collar, 2 large pockets on belly and 4-button tape.

95% cotton, 5% spandex. 40 °C wash.

Back length: 72 cm at size S.

■ Color: white, blackberry, navy, black

■ Size: XS, S, M, L, XL, 2XL

Short sleeve women

124891

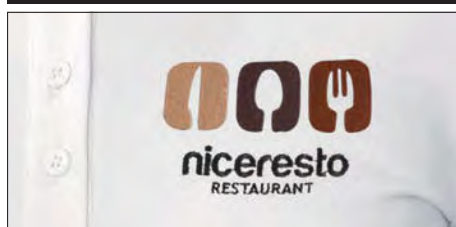
Piece: 26,99



white blackberry navy black



■ Perfect for your embroidery



► Customizing p. 142

**SHIRTS**



COMFORT & FRESHNESS

1

1

Polo shirt  
Oliver  
Piece only  
29<sup>99</sup>



YOUR BENEFIT  
WITH OLIVER

Antibacterial Sanitized®  
hygiene function: You  
will stay fresh for a longer  
time!



2

Polo shirt  
Cato Line  
Piece only  
26<sup>99</sup>



3

3

Polo shirt  
Cato Chambray  
Piece only  
29<sup>99</sup>



**NEW  
COLLECTION**



Men



1

Women



Men



2

Women



Men



3

Women

### 1 Polo shirt Oliver

Modern polo piqué shirt for women and men in easy care, crease-resistant cotton-spandex quality. The integrated Sanitized® hygiene function reliably protects the material from bacteria and guarantees permanent freshness. With ready made collar and three-button tape at men's model. The women's model is equipped with a four-button tape. Both polo shirts are cut slim fit. **95% cotton, 5% spandex. 40 °C wash.**  
**Back length women: 67 cm at size S.**  
**Back length men: 74 cm at size M.**  
**Color:** white, rosé, olive, navy, black  
**Size women:** XS, S, M, L, XL, 2XL  
**Size men:** S, M, L, XL, 2XL, 3XL

|                    |        |              |
|--------------------|--------|--------------|
| Short sleeve women | 125091 | Piece: 29,99 |
| Short sleeve men   | 124896 | Piece: 29,99 |

### 2 Polo shirt Cato Line

Slightly waisted polo piqué shirt for women and men with Sanitized® hygiene function. It reliably protects the material from bacteria and guarantees permanent freshness. Stripe applications on flat knit cuffs on sleeves and collar, side slits, three-button tape and chest pocket at men's model, four-button tape at women's model. **95% cotton, 5% spandex. 40 °C wash.**  
**Back length women: 60 cm at size S.**  
**Back length men: 71 cm at size M.**  
**Color:** white, white/red/green, navy  
**Size women:** XS, S, M, L, XL, 2XL  
**Size men:** S, M, L, XL, 2XL, 3XL

|                    |        |              |
|--------------------|--------|--------------|
| Short sleeve women | 117578 | Piece: 26,99 |
| Short sleeve men   | 117579 | Piece: 26,99 |

### 3 Polo shirt Cato Chambray

Slightly waisted polo piqué shirt for women and men with chambray collar and Sanitized® hygiene function. It reliably protects the material from bacteria and guarantees permanent freshness. Flat knit cuffs on sleeves, side slits and button tape. **95% cotton, 5% spandex. 40 °C wash.**  
**Back length women: 60 cm at size S.**  
**Back length men: 71 cm at size M.**  
**Color:** white/blue  
**Size women:** XS, S, M, L, XL  
**Size men:** S, M, L, XL, 2XL

|                    |        |              |
|--------------------|--------|--------------|
| Short sleeve women | 117576 | Piece: 29,99 |
| Short sleeve men   | 117577 | Piece: 29,99 |



white rosé olive navy black



white white/red/green navy



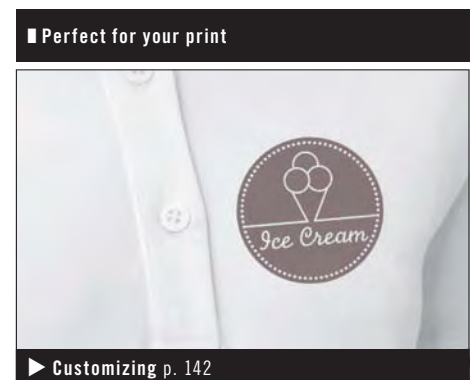
1

■ Elegant, ready made collar made of polo piqué fabric



1

■ Highlight: Special detail on sleeve



■ Perfect for your print

► Customizing p. 142



VARIETY OF COLORS

Polo shirt  
Fly  
Piece only

17<sup>99</sup>

from 3 pieces\*

■ Extra long back length for demands in the gastronomy

■ Straight cut

■ Great variety of colors

■ Easy to care

▶ Apron Botero p. 23



# OUR BESTSELLERS IN PRICE AND PERFORMANCE



white mango red bordeaux blackberry plum apple green



turquoise smoky blue taupe coca graphite black

## Polo shirt Fly

Polo piqué shirt for women and men in Superwash quality with flat-knit cuffs and collar and three-button tape.

65% polyester, 35% cotton. 60 °C wash.

Back length women: 64 cm at size S.

Back length men: 74 cm at size M.

■ Color: white, mango, red, bordeaux, blackberry, plum, apple green, turquoise, smoky blue, taupe, coca, graphite, black

■ Size women: XS, S, M, L, XL, 2XL, 3XL

■ Size men: S, M, L, XL, 2XL, 3XL, 4XL

Short sleeve women

101301

Piece: 19,99

Short sleeve men

100672

Piece: 19,99

**NEW - Buy more. Save more.**

from 3 pieces\*

17,99

Save 10%!

\*if same color and size



## PERFECT FOR YOUR EMBROIDERY



■ Very good price/performance ratio

■ Large color selection

■ No minimum order quantity

► Customizing p. 142 or [www.em-group.com](http://www.em-group.com)



# POPULAR BASICS



▶ Apron Botero p. 23

Polo shirt  
Chiara  
Piece only  
**16<sup>99</sup>**  
from 3 pieces\*



■ With share of spandex for optimal freedom of movement

■ Easy to care and to iron

Polo shirt  
Benita  
Piece only  
**13<sup>99</sup>**  
from 3 pieces\*



## 1 Polo shirt Chiara

Slightly waisted women's polo shirt with 3/4 sleeves with V-polo collar and small side slits.  
95% cotton, 5% spandex. 40 °C wash.

Back length: 60 cm at size S.

■ Color: white, bordeaux, blackberry, taupe, coca, black

■ Size: S, M, L, XL

3/4 sleeve women

101278

Piece: 18,99

**NEW - Buy more. Save more.**

from 3 pieces\*

16,99

Save 10%!

\*if same color and size



white bordeaux blackberry taupe coca black



## 2 Polo shirt Benita

Slightly waisted women's polo shirt with short sleeves with V-neckline.

95% cotton, 5% spandex. 40 °C wash.

Back length: 60 cm at size S.

■ Color: white, bordeaux, blackberry, taupe, coca, black

■ Size: XS, S, M, L, XL

Short sleeve women

100800

Piece: 15,99

**NEW - Buy more. Save more.**

from 3 pieces\*

13,99

Save 12%!

\*if same color and size



white bordeaux blackberry taupe coca black







■ Extra long back length for demands in the gastronomy

**3 T-Shirt Double-V**

Fashionable, slim fit shirt in pack of 2 for women and men in trendy colors. Very waisted cut with V-neck.

95% cotton, 5% spandex. 40 °C gentle wash.

Back length women: 65 cm at size S.

Back length men: 71 cm at size M.

■ Color: white, blackberry, apple green, black

■ Size women: XS, S, M, L, XL

■ Size men: S, M, L, XL, 2XL

Short sleeve women 101563 Pack of 2: 15,98

Piece: 7,99

Short sleeve men 101567 Pack of 2: 15,98

Piece: 7,99

**4 T-Shirt Double**

Fashionable, slim fit shirt in pack of 2 for women and men in trendy colors. Very waisted cut and crew neck.

95% cotton, 5% spandex. 40 °C gentle wash.

Back length women: 65 cm at size S.

Back length men: 71 cm at size M.

■ Color: white, blackberry, apple green, black

■ Size women: XS, S, M, L, XL

■ Size men: S, M, L, XL, 2XL

Short sleeve women 102004 Pack of 2: 15,98

Piece: 7,99

Short sleeve men 117571 Pack of 2: 15,98

Piece: 7,99

**5 Shirt Double-Long**

Fashionable, slim fit long sleeve shirt in pack of 2 for women and men. Very waisted cut and crew neck.

95% cotton, 5% spandex. 40 °C gentle wash.

Back length women: 65 cm at size S.

Back length men: 71 cm at size M.

■ Color: white, black

■ Size women: XS, S, M, L, XL

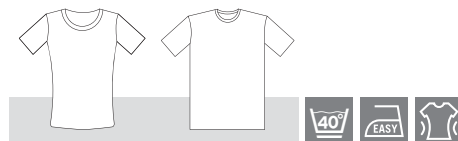
■ Size men: S, M, L, XL, 2XL

Long sleeve women 115599 Pack of 2: 16,98

Piece: 8,49

Long sleeve men 115598 Pack of 2: 16,98

Piece: 8,49



**MORE STYLES & TRENDS IN OUR ONLINE SHOP**

Order easy and convenient online: 95% on stock, fast delivery, always new products and offers!

[www.em-group.com](http://www.em-group.com)



COOL & CASUAL



JAQUARD  
PATTERN



Men

Women

**NEW  
COLOR**



Men

Women

Shirt  
Jona  
Piece only  
**44<sup>99</sup>**

► Suspenders p. 82

■ Made of easy care and tear-resistant chambray

■ Easy to iron



■ Soft feeling due to high-quality chambray fabric

■ Easy to iron



Shirt  
Chambray  
Piece only  
**39<sup>99</sup>**

**1 Blouse/Shirt Jona**

Slim cut blouse and shirt made of lightweight chambray fabric with trendy Jaquard pattern, with cuffs and rounded seam. Women's model is slightly waisted.

100% cotton. 40 °C wash.

Back length women: 66 cm at size 36.

Back length men: 77 cm at size 50.

■ Color: blue/white

■ Size women: 34, 36, 38, 40, 42, 44, 46

■ Size men: 37/38, 39/40, 41/42, 43/44

Long sleeve women 124289

Piece: 44,99

Long sleeve men 124290

Piece: 44,99



**2 Blouse/Shirt Chambray**

Slim cut blouse and shirt made of lightweight chambray fabric with chest pocket, cuffs and rounded seam. Women's model is slightly waisted.

100% cotton. 40 °C wash.

Back length women: 66 cm at size 36.

Back length men: 77 cm at size 39/40.

■ Color: blue, grey **NEW**

■ Size women: 34, 36, 38, 40, 42, 44, 46, 48, 50

■ Size men: 37/38, 39/40, 41/42, 43/44, 45/46, 47/48

Long sleeve women 117499

Piece: 39,99

Long sleeve men 117503

Piece: 39,99





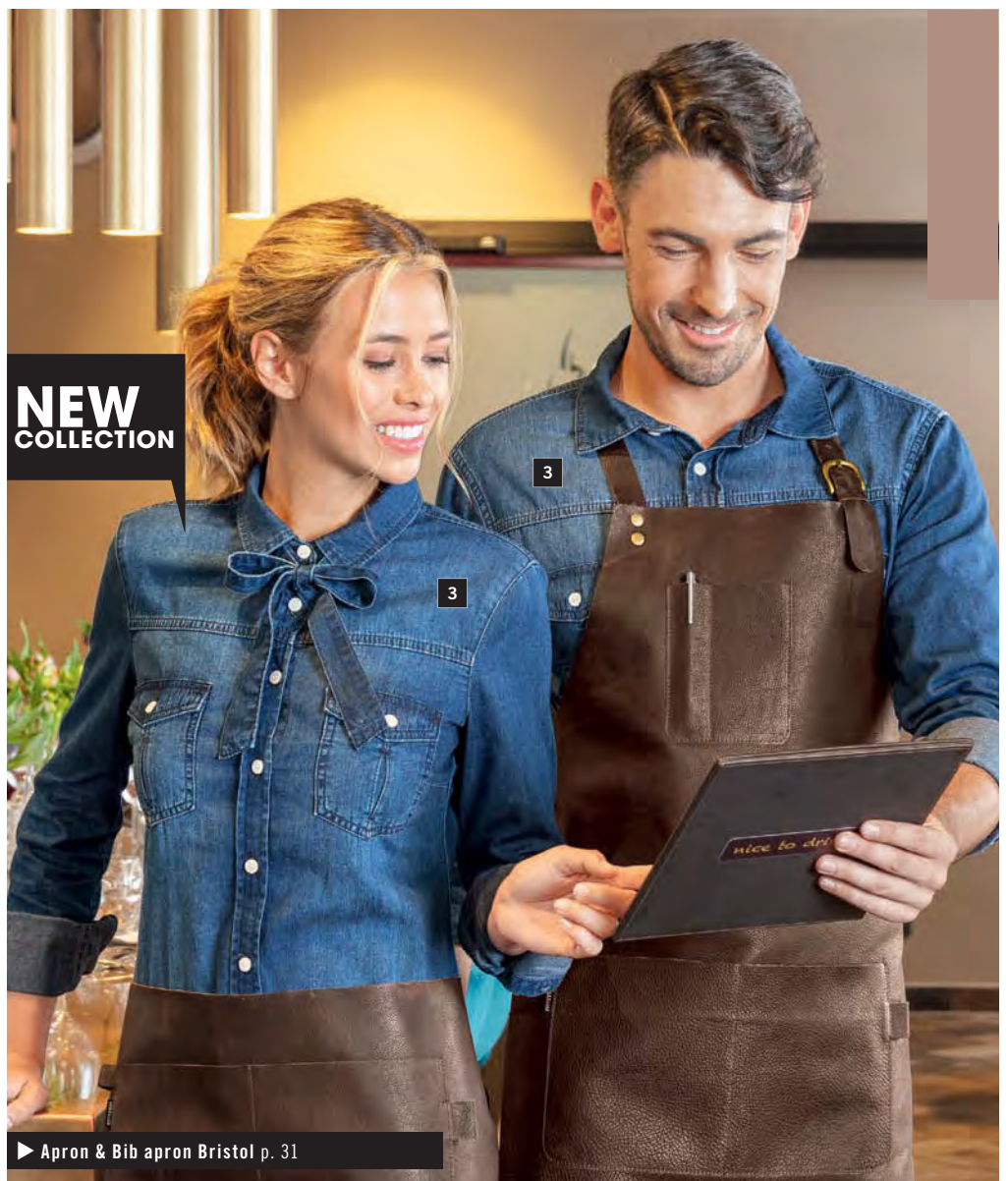


Men

Women

Blouse & Shirt  
Jean  
Piece only  
**44<sup>99</sup>**

- With rounded seam
- Made of pure cotton
- Easy to care and to iron



**NEW  
COLLECTION**

▶ Apron & Bib apron Bristol p. 31

**3 Blouse/Shirt Jean**

Slightly waisted women's blouse and men's shirt made of real denim. With two breast pockets with button closure. The waisted women's blouse has a removable band under the collar.

100% cotton (denim). 40 °C wash.

Back length women: 69 cm at size 36.

Back length men: 74 cm at size 39/40.

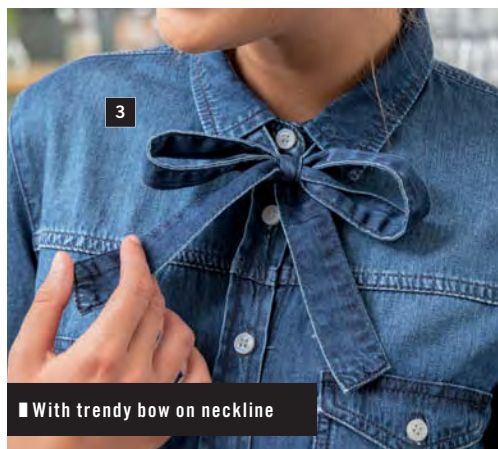
■ Color: dark blue

■ Size women: 34, 36, 38, 40, 42, 44, 46, 48, 50

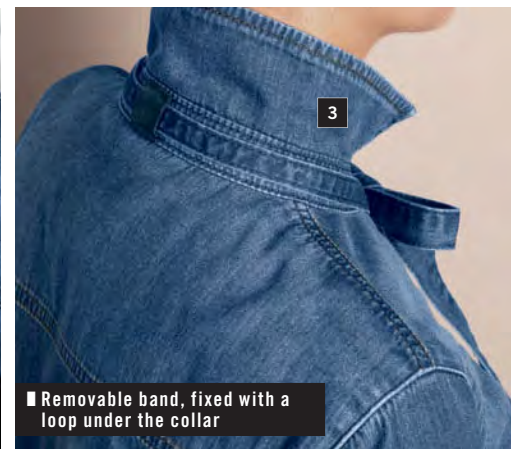
■ Size men: 37/38, 39/40, 41/42, 43/44, 45/46, 47/48

Long sleeve women 124907 Piece: 44,99

Long sleeve men 124911 Piece: 44,99



■ With trendy bow on neckline

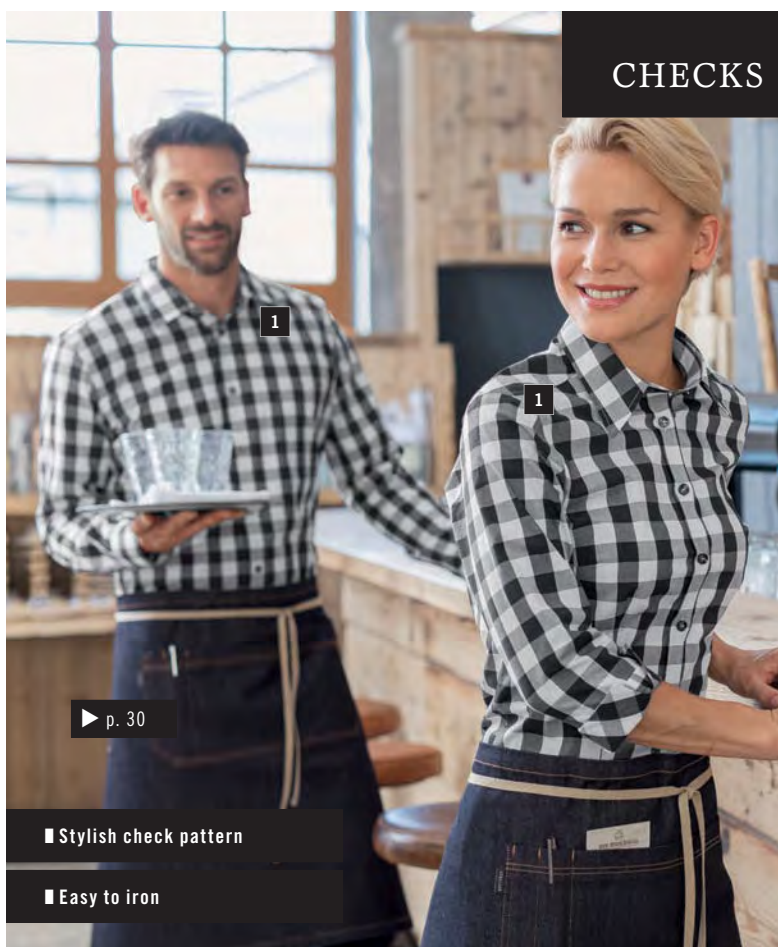


■ Removable band, fixed with a loop under the collar

# BLOUSES & SHIRTS



## CHECKS & STRIPES



▶ p. 30

■ Stylish check pattern

■ Easy to iron



■ Modern cut

■ Easy to iron



Men

1

Women

Blouse & Shirt  
Davis  
Piece from  
**38<sup>99</sup>**



Men

2

Women

Blouse  
Bailey  
Piece from  
**38<sup>99</sup>**

### 1 Blouse/Shirt Davis

Checked women's blouse and checked men's shirt with cuffs and slightly waisted cut. Blouse is available with 3/4 sleeves and long sleeves. Shirt is available with long sleeves.

100% cotton. 60 °C wash.

Back length women: 64 cm at size 36.

Back length men: 80 cm at size 39/40.

■ Color: white/black

■ Size women: 34, 36, 38, 40, 42, 44, 46, 48, 50

■ Size men: 37/38, 39/40, 41/42, 43/44, 45/46

3/4 sleeve women 118736

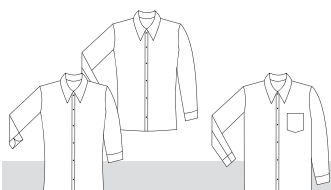
Long sleeve women 117498

Long sleeve men 117502

Piece: 38,99

Piece: 39,99

Piece: 39,99



### 2 Blouse Bailey and Shirt Jackson

Checked women's blouse and checked men's shirt with slightly waisted cut. Women's blouse available with 3/4 and long sleeves. Men's shirt is available with long sleeves and with chest pocket incl. pen pocket.

100% cotton. 40 °C wash.

Back length women: 64 cm at size 36.

Back length men: 80 cm at size 39/40.

■ Color: white/red/blue

■ Size women: 34, 36, 38, 40, 42, 44, 46, 48, 50

■ Size men: 37/38, 39/40, 41/42, 43/44, 45/46

3/4 sleeve women 115259

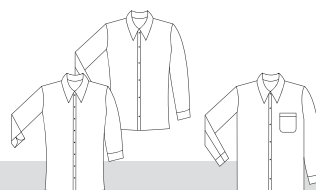
Long sleeve women 115258

Long sleeve men 115347

Piece: 38,99

Piece: 39,99

Piece: 39,99







Men



VICHY CHECK



Men



Men



3



FINELY WOVEN STRIPES



4

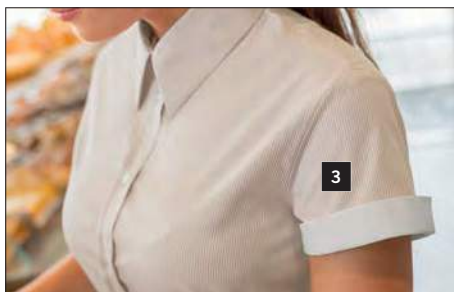


5



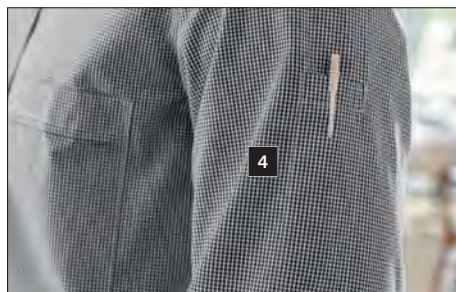
Blouse Theresa  
Piece only  
**44<sup>99</sup>**

Women



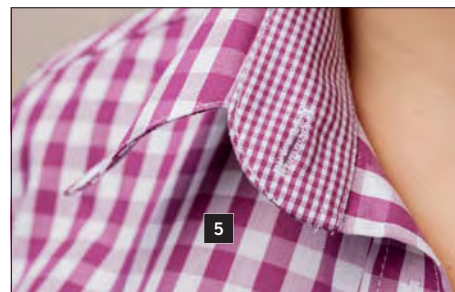
3

With contrasting white cuffs



4

Chest pocket and pen pocket on sleeve



5

Noble detail: Vichy check on collar and on the inside of the cuffs

### 3 Blouse Clea and Shirt Lius

Blouse and shirt with finely woven stripes, in short sleeve. Women's blouse is slightly waisted and has a contrasting white cuff. The men's shirt is equipped with a trendy button-down collar.

61% cotton, 39% polyester. 30 °C wash.

Back length women: 63 cm at size 36.

Back length men: 78 cm at size 39/40.

Color: beige/white, bordeaux/white, blue/white

Size women: 34, 36, 38, 40, 42, 44, 46

Size men: 37/38, 39/40, 41/42, 43/44

Short sleeve women 101273

Piece: 29,99

Short sleeve men 102365

Piece: 29,99

### 4 Blouse/Shirt Harper

Blouse and shirt in trendy Vichy check in various color variants. Chest pocket and pen pocket on sleeve. Women's model is slightly waisted and available with 3/4 sleeves or roll-up sleeves.

55% cotton, 45% polyester. 40 °C wash.

Back length women: 69 cm at size 36.

Back length men: 77 cm at size 39/40.

Color: bordeaux, navy, black

Size women: 34, 36, 38, 40, 42, 44, 46, 48, 50

Size men: 37/38, 39/40, 41/42, 43/44, 45/46

3/4 sleeve women 120180

Piece: 28,99

Long sleeve women 120179

Piece: 29,99

Long sleeve men 120183

Piece: 29,99

### 5 Blouse Theresa and shirt Kilian

Blouse and shirt made of high-quality cotton fabric with collar and cuffs in color matching Vichy check. Slightly waisted women's blouse available with 3/4 sleeves. Men's shirt with chest pocket available with long sleeves.

100% cotton. 40 °C wash.

Back length women: 64 cm at size 36.

Back length men: 80 cm at size 39/40.

Color: blackberry, dark blue

Size women: 34, 36, 38, 40, 42, 44, 46, 48, 50

Size men: 37/38, 39/40, 41/42, 43/44, 45/46

3/4 sleeve women 101191

Piece: 44,99

Long sleeve men 101192

Piece: 44,99



beige/white

bordeaux/white

blue/white



bordeaux

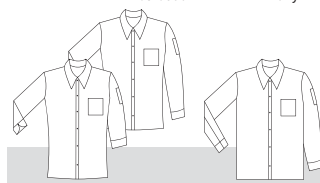
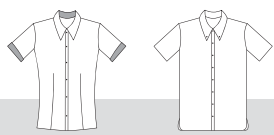
navy

black



blackberry

dark blue





EASY-IRON CLASSICS

Shirt  
Kim  
Piece only  
29<sup>99</sup>

**NEW**  
COLLECTION

■ Women's blouse and men's shirt available  
in 2 classic sleeve lengths each

▶ p. 82

■ Colorfast due to share of polyester

■ Particularly easy to care and to iron

■ Highlight: Long sleeved women's blouse  
can easily be transformed to 3/4  
sleeves

▶ p. 82

▶ Trousers Chino p. 80



# TOP NOVELTIES IN PRICE AND PERFORMANCE

## Blouse Kim:



white    bordeaux    blackberry    olive    azure blue    navy    taupe    black

## Shirt Kim:



white    bordeaux    blackberry    olive    azure blue    navy    taupe    black

### Blouse/Shirt Kim

Blouse and shirt with chest pocket. Modern cut, in numerous colors, available with short or long sleeves. Women's model is slightly waisted. The women's blouse with long sleeves has roll-up sleeves to transform them to 3/4 sleeves. The material is particularly easy to care and to iron.

**65% cotton, 35% polyester. 40 °C wash.**

**Back length women: 68 cm at size 36.**

**Back length men: 80 cm at size 39/40.**

■ **Color:** white, bordeaux, blackberry, olive, azure blue, navy, taupe, black

■ **Size women:** 34, 36, 38, 40, 42, 44, 46, 48, 50

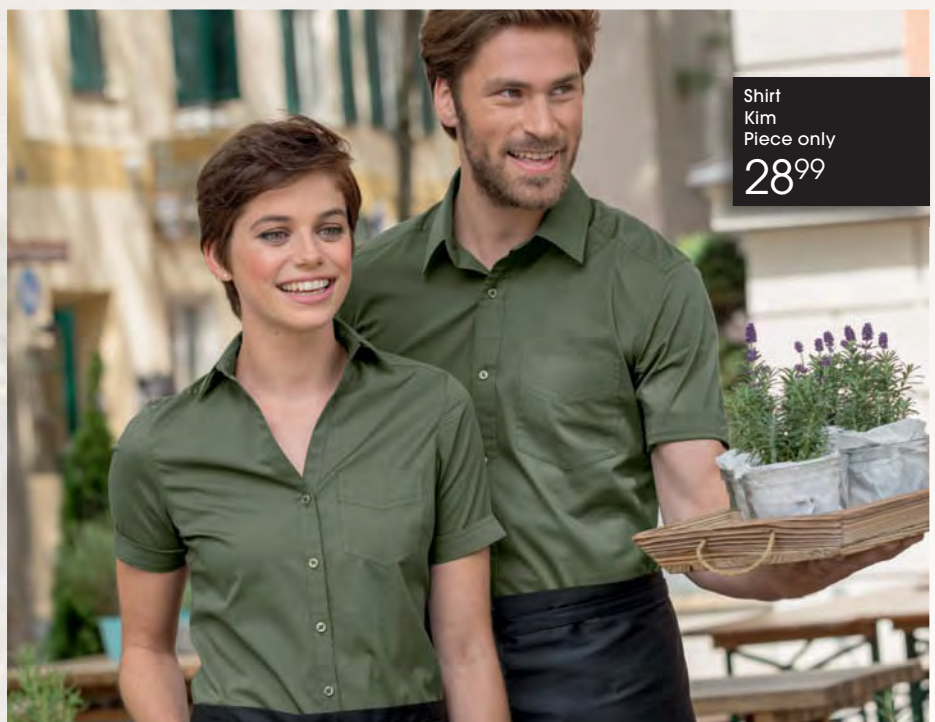
■ **Size men:** 37/38, 39/40, 41/42, 43/44, 45/46

**Short sleeve women**    124885    **Piece: 28,99**

**Long sleeve women**    124886    **Piece: 29,99**

**Short sleeve men**    124890    **Piece: 28,99**

**Long sleeve men**    124894    **Piece: 29,99**



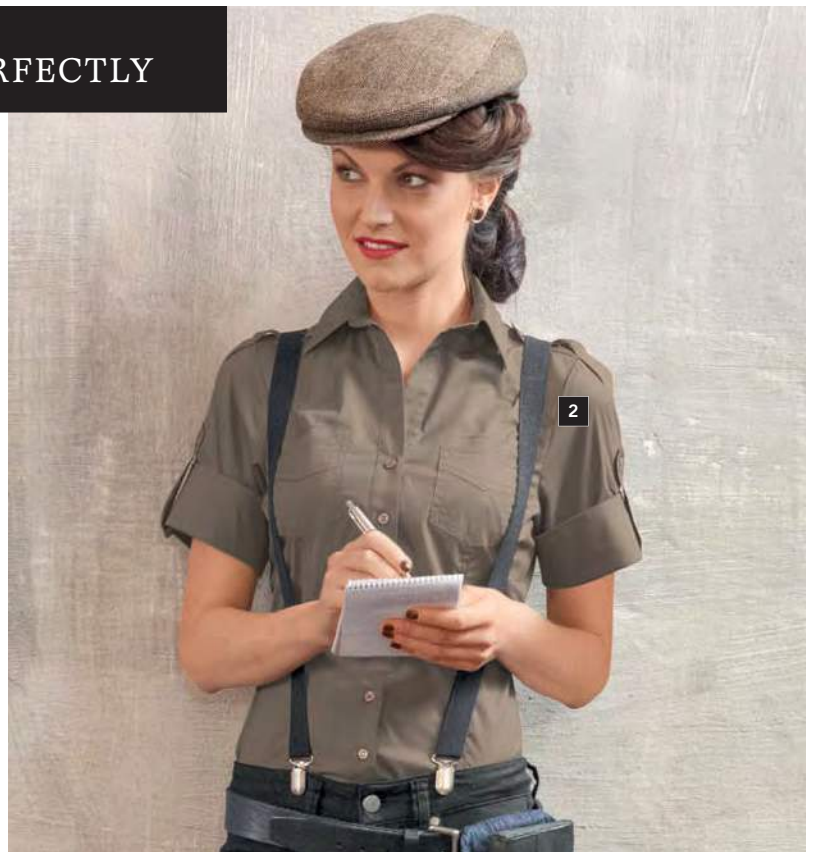
Shirt  
Kim  
Piece only  
**28<sup>99</sup>**



# FITS PERFECTLY



Shirt Jules  
Piece only  
**29<sup>99</sup>**



Shirt Jules  
Piece from  
**28<sup>99</sup>**

- Roll-up sleeves
- Share of spandex for more wearing comfort and agility
- Extra long back length for demands in the gastronomy



Blouse Kate  
Piece from  
**28<sup>99</sup>**

- Available in 9 colors
- Share of spandex for more wearing comfort and agility
- Color matching to shirt Bruce

## 1 Shirt Jules

Waisted men's shirt in trendy cut with 2 patch breast pockets and roll-up sleeves at long sleeve model. Also available with short sleeves.

98% cotton, 2% spandex. 40 °C wash.

Back length: 78 cm at size 39/40.

■ Color: white, smoky blue, taupe, black

■ Size: 37/38, 39/40, 41/42, 43/44

Short sleeve men

115345

Piece: 28,99

Long sleeve men

115346

Piece: 29,99

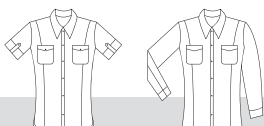


white

smoky blue

taupe

black



## 2 Blouse Kate

Modern waisted women's blouse available with short and long sleeves with decorative epaulettes and patch breast pockets. High wearing comfort due to share of spandex for optimal freedom of movement. Also wearable over pants thanks to rounded seam.

98% cotton, 2% spandex. 40 °C wash.

Back length: 64 cm at size 36.

■ Color short sleeve: white, bordeaux, blackberry, apple green, moss green, smoky blue, taupe, graphite, black

■ Color long sleeve: white, blackberry, smoky blue, taupe, black

■ Size: 34, 36, 38, 40, 42, 44, 46, 48, 50

Short sleeve women

101133

Piece: 28,99

Long sleeve women

115254

Piece: 29,99



white

bordeaux

blackberry

apple green

moss green

smoky blue

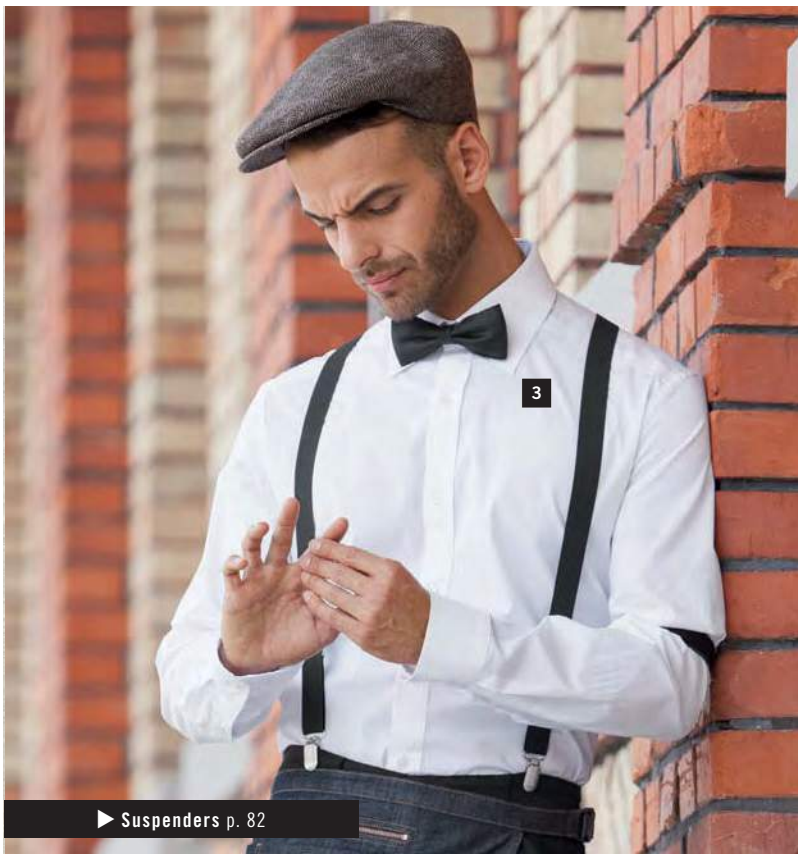
taupe

graphite

black







► Suspenders p. 82



Blouse  
Cecaria  
Piece only  
**33<sup>99</sup>**



Shirt  
Bruce  
Piece from  
**28<sup>99</sup>**

- Great variety of colors
- Easy care
- Optimal freedom of movement due to share of spandex



**NEW  
COLORS**

- Slim fit
- Easy care
- Extra long back length for demands in the gastronomy

### 3 Shirt Bruce

Classic men's shirt with darts at the back, slightly waisted cut. High wearing comfort due to share of spandex for optimal freedom of movement. Extra long back length prevents slipping out of pants, for highest demands in the gastronomy.

98% cotton, 2% spandex. 40 °C wash.

Back length: 78 cm at size 39/40.

■ Color: white, bordeaux, blackberry, apple green, moss green, smoky blue, taupe, graphite, black

■ Size: 37/38, 39/40, 41/42, 43/44, 45/46

|                  |        |              |
|------------------|--------|--------------|
| Short sleeve men | 102411 | Piece: 28,99 |
| Long sleeve men  | 100740 | Piece: 29,99 |

### 4 Blouse Cecaria

Waisted women's blouse with half and long sleeves. Darts in front and back part. Rounded seam. Color matching buttons. Short sleeve: Cuffs with short slit and 2-button closure.

98% cotton, 2% spandex. 40 °C wash.

Back length: 64 cm at size 36.

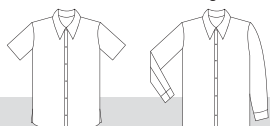
■ Color: white, bordeaux, blackberry, apple green **NEW**, moss green, smoky blue, taupe **NEW**, graphite, black

■ Size: 34, 36, 38, 40, 42, 44, 46

|                    |        |              |
|--------------------|--------|--------------|
| Short sleeve women | 101403 | Piece: 33,99 |
| Long sleeve women  | 101708 | Piece: 34,99 |



white bordeaux blackberry apple green moss green smoky blue taupe graphite black



white bordeaux blackberry apple green moss green smoky blue taupe graphite black





# MODERN ELEGANCE



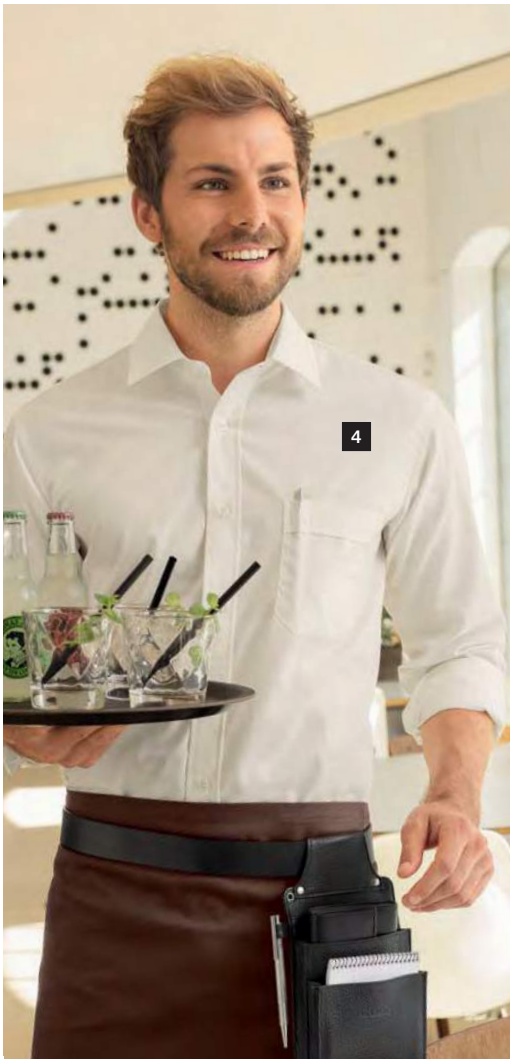
Blouse  
Tabea  
Piece from  
**21,99**  
from 3 pieces\*



Perfect for your embroidery or your print



► Customizing p. 142



## 1 Blouse Tabea

Waisted women's blouse with short and long sleeves in trendy cuff shape. In easy-iron cotton-polyester quality. 65% cotton, 35% polyester. 40 °C wash.

Back length: 69 cm at size 36.

Color: white, black

Size: 34, 36, 38, 40, 42, 44, 46

Short sleeve women 115257

Piece: 23,99

Long sleeve women 100920

Piece: 24,99

**NEW - Buy more. Save more.**

from 3 pieces\*

Short sleeve 21,99

Long sleeve 22,99

**Save 8%!**

\*if same color and size



white black







Shirt  
Rico  
Piece from  
**21<sup>99</sup>**  
from 3 pieces\*

2

- Extra long back length for demands in the gastronomy
- Easy care cotton-polyester quality
- Easy to iron



Blouse  
Filipa  
Piece from  
**32<sup>99</sup>**

3

- Available in 3 different sleeve lengths
- Extra long back length for demands in the gastronomy
- Easy to iron



Shirt  
Marc  
Piece from  
**33<sup>99</sup>**

4

- Extra long back length for demands in the gastronomy
- Chest pocket incl. pen pocket
- Easy to iron

## 2 Shirt Rico

Men's shirt in easy-iron cotton-polyester quality with chest pocket.

65% polyester, 35% cotton. 40 °C wash.

Back length: 84 cm at size 39/40.

■ Color: white, black

■ Size: 37/38, 39/40, 41/42, 43/44, 45/46

|                  |        |              |
|------------------|--------|--------------|
| Short sleeve men | 102244 | Piece: 23,99 |
| Long sleeve men  | 101054 | Piece: 24,99 |

**NEW - Buy more. Save more.**

from 3 pieces\*

|              |       |
|--------------|-------|
| Short sleeve | 21,99 |
| Long sleeve  | 22,99 |

Save 8%!

\*if same color and size



white black

## 3 Blouse Filipa

Slightly waisted women's blouse in easy-iron cotton quality with darts.

100% cotton. 40 °C wash.

Back length: 66 cm at size 36.

■ Color: white, cream white, taupe, coca, black **NEW**

■ Size: 34, 36, 38, 40, 42, 44, 46, 48, 50

|                    |        |              |
|--------------------|--------|--------------|
| Short sleeve women | 100659 | Piece: 32,99 |
| 3/4 sleeve women   | 101976 | Piece: 33,99 |
| Long sleeve women  | 101977 | Piece: 34,99 |



white cream white taupe coca black

## 4 Shirt Marc

Men's shirt in easy-iron cotton quality with chest pocket incl. pen pocket.

100% cotton. 40 °C wash.

Back length: 80 cm at size 39/40.

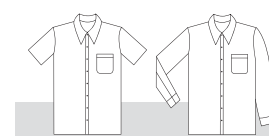
■ Color: white, cream white, taupe, coca, black

■ Size: 37/38, 39/40, 41/42, 43/44, 45/46

|                  |        |              |
|------------------|--------|--------------|
| Short sleeve men | 102366 | Piece: 33,99 |
| Long sleeve men  | 100658 | Piece: 34,99 |



white cream white taupe coca black





STYLISH SERVICE

NEW  
COLOR

Shirt  
Noah  
Piece only  
29<sup>99</sup>

2

1

Blouse  
Fiore  
Piece only  
25<sup>99</sup>

■ Extra long back length for demands in the gastronomy

■ Elegant, covered button tape

■ Easy to iron

■ Fiore: A solution for every type of figure, thanks to the slightly waisted cut and straight frontside

► Suspenders p. 82, Apron Botero p. 23



# OUR BESTSELLERS IN PRICE AND PERFORMANCE



white      cream white      bordeaux      taupe      grey      black



white      cream white      bordeaux      taupe      grey      black

## 1 Blouse Fiore

Women's blouse made of easy care blended fabric with covered button tape.

67% cotton, 33% polyester. 40 °C wash.

Back length: 70 cm at size 36.

■ Color: white, cream white, bordeaux, taupe **NEW**, grey, black

■ Size: 34, 36, 38, 40, 42, 44, 46, 48, 50

Short sleeve women

101890

Piece: 24,99

3/4 sleeve women

101855

Piece: 25,99

Long sleeve women

101908

Piece: 26,99

## 2 Shirt Noah

Men's shirt in easy-iron cotton-polyester quality.

67% cotton, 33% polyester. 40 °C wash.

Back length: 78 cm at size 39/40.

■ Color: white, cream white, bordeaux, taupe **NEW**, grey, black

■ Size: 37/38, 39/40, 41/42, 43/44, 45/46

Short sleeve men

115348

Piece: 28,99

Long sleeve men

115349

Piece: 29,99



short sleeve

3/4 sleeve

long sleeve



short sleeve

long sleeve





## TOP PRODUCT

Shirt  
Delano  
Piece only  
**39<sup>99</sup>**

■ Women's blouse available in 2 sleeve lengths

■ Made of high-quality cotton-polyester yarn

■ Particularly easy to iron

■ Slightly waisted, modern cut

▶ Apron Smoking p. 42

▶ More information [www.em-group.com](http://www.em-group.com)



Elegant and classic black or white: That's how you are always well dressed in the service. Blouse and shirt Delano are furthermore easy to care for and easy to iron and thanks to the high-quality fabric particularly durable.

**NEW  
COLLECTION**



Men

Women

**Blouse/Shirt Delano**

Blouse and shirt in black or white. High-quality fabric, easy-iron. The slightly waisted women's model is available with 3/4 sleeves or long sleeves.

65% cotton, 35% polyester. 40 °C wash.

Back length women: 70 cm at size 36.

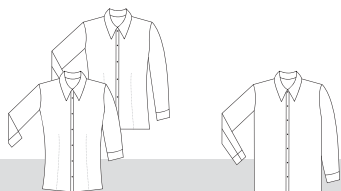
Back length men: 79 cm at size 39/40.

■ Color: white, black

■ Size women: 34, 36, 38, 40, 42, 44, 46, 48, 50

■ Size men: 37/38, 39/40, 41/42, 43/44, 45/46

|                   |        |              |
|-------------------|--------|--------------|
| 3/4 sleeve women  | 124883 | Piece: 38,99 |
| Long sleeve women | 124884 | Piece: 39,99 |
| Long sleeve men   | 124889 | Piece: 39,99 |



■ Elegant, classic Kent-collar



■ Noble cuff



**YOUR BENEFIT  
WITH DELANO**

- Easy-iron, easy care yarn: Saves time due to low care effort
- High-quality fabric: Blouse and shirt are hard-wearing and stay beautiful for a long time



# SIMPLE ELEGANCE



Blouse  
Zena  
Piece only  
**28<sup>99</sup>**

1

- High wearing comfort due to share of spandex
- Extra long back length for demands in the gastronomy
- Available in 2 practical sleeve lengths



Blouse  
Lucie  
Piece only  
**26<sup>99</sup>**

2



Blouse  
Maren  
Piece only  
**29<sup>99</sup>**

3

► Tie Color slim p. 83



PERMANENTLY  
REDUCED  
IN PRICE!



1



2



3

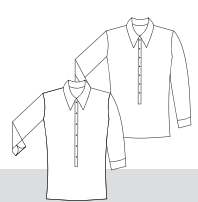
! Style update: Now available with continuous button tape.

- Gathered neckline with small buttons
- Zipper in the side seam for easy dressing

- Available in 3 sleeve lengths
- Easy to iron
- Straight cut

**1 Blouse Zena**  
Trendy waisted women's blouse in 3/4 and long sleeves with continuous button tape. Special seams for the waisted shape in the front and back for a better fit.  
98% cotton, 2% spandex. 40 °C wash.  
Back length: 69 cm at size 36.  
■ Color: white, black  
■ Size: 34, 36, 38, 40, 42, 44, 46

|                   |        |              |
|-------------------|--------|--------------|
| 3/4 sleeve women  | 125155 | Piece: 28,99 |
| Long sleeve women | 125156 | Piece: 29,99 |



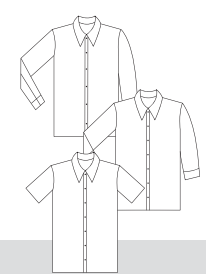
**2 Blouse Lucie**  
Slip-over blouse in short sleeve with small buttons on the gathered neckline and small button bands on the end of the sleeves. Integrated zipper on the side seam.  
98% cotton, 2% spandex. 40 °C wash.  
Back length: 65 cm at size 36.  
■ Color: white, black  
■ Size: 34, 36, 38, 40, 42, 44, 46

|                    |        |              |
|--------------------|--------|--------------|
| Short sleeve women | 100936 | Piece: 26,99 |
|--------------------|--------|--------------|



**3 Blouse Maren**  
Classic shirt blouse in straight cut, in 3 sleeve lengths.  
100% cotton. 60 °C wash.  
Back length: 65 cm at size 36.  
■ Color: white  
■ Size: 34, 36, 38, 40, 42, 44, 46, 48, 50

|                    |        |              |
|--------------------|--------|--------------|
| Short sleeve women | 100396 | Piece: 27,99 |
| 3/4 sleeve women   | 101817 | Piece: 28,99 |
| Long sleeve women  | 101818 | Piece: 29,99 |





# TREND AMBASSADOR



1

2

1

▶ p. 61

▶ p. 52

▶ p. 63

▶ Trousers Chino p. 80





► More information p. 135



Men



1

Women

Vest  
Blake  
Piece only  
**49<sup>99</sup>**



Men



2

Women

Vest  
Limerick  
Piece only  
**49<sup>99</sup>**



1

Men

- Adjustable back strap
- Back made of taffeta
- Fabric in cool Used-Look
- Slightly changes in color and washing are possible and ensure a unique look over time



2

Women

- Adjustable back strap
- Back made of taffeta
- High-quality fabric in elegant and color-stable look

**1 Vest Blake**

Modern chambray vest for men and women with taffeta back and adjustable back strap. Women's model with 2 piped pockets, men's model with 3 piped pockets.

55% polyester, 45% lyocell (Tencel®). 30 °C gentle wash.

Back length women: 51 cm at size 36.

Back length men: 56 cm at size 50.

■ Color: light blue

■ Size women: 34, 36, 38, 40, 42, 44, 46

■ Size men: 44, 46, 48, 50, 52, 54, 56, 58, 60



Women  
Men

117580  
117581

Piece: 49,99  
Piece: 49,99

**2 Vest Limerick**

Classic vest for men and women with taffeta back and adjustable back strap. Women's model with 2 piped pockets, men's model with 3 piped pockets.

55% polyester, 45% wool. 30 °C gentle wash.

Back length women: 51 cm at size 36.

Back length men: 56 cm at size 50.

■ Color: anthracite

■ Size women: 34, 36, 38, 40, 42, 44, 46

■ Size men: 44, 46, 48, 50, 52, 54, 56, 58, 60



Women  
Men

117582  
117583

Piece: 49,99  
Piece: 49,99

# VESTS



JOBELINE

work · fashion · fun

Chef jacket  
Carter  
Piece only

39<sup>99</sup>

▶◆. 101

**VEGA**

JOBELINE

Parceiro exclusivo



[www.DAUTI.pt](http://www.DAUTI.pt)

Hotelwäsche  
**Erwin Müller**

**pulsiva**

Rua Nova, 420 | 4570-074 Balasar | Portugal Tel. +351 252 954 026 Fax. +351 252 955 335 | [comercial@dauti.pt](mailto:comercial@dauti.pt)