

J O B E L I N E

work · fashion · fun

Annual Catalog  
2019

Workwear  
for Restaurant,  
Hotel & Catering

[www.em-group.com](http://www.em-group.com)

Removable ribbons for easy washing  
and a cool look:  
Bib apron Ben p. 29

EN0319JL 10099887

ELEGANCE & STYLE



■ Colorfast

■ Hard-wearing and easy care

■ Great variety of colors

▶ Apron Nando p. 25, Cashier holster Rio p. 82, Waiter chain p. 82

# OUR BESTSELLERS IN PRICE AND PERFORMANCE

**NEW  
COLOR**

QUANTITY  
DISCOUNT  
%

Women



bordeaux

taupe

light grey

graphite

black

Men



bordeaux

taupe

light grey

graphite

black

## Vest Bistro

Service vest for men and women. Front and back part are made of easy care cotton-polyester fabric. Women's vest: 2 piped outer pockets. Men's vest: 3 piped outer and 1 inner chest pocket.

65% polyester, 35% cotton. 40 °C wash.

Back length women: 55 cm at size 36.

Back length men: 66 cm at size 50.

■ Color: bordeaux, taupe, light grey **NEW**, graphite, black

■ Size women: 34, 36, 38, 40, 42, 44, 46, 48, 50

■ Size men: 44, 46, 48, 50, 52, 54, 56, 58, 60, 62, 64

Women

102217

Piece: 22,99

Men

100528

Piece: 22,99

**NEW - Buy more. Save more.**

from 3 pieces\*

19,99

Save 13%!

\*if same color and size

Vest  
Bistro  
Piece only

19,99

from 3 pieces\*



Men



Women



## TOP PRODUCT

Vest  
Pinstripe  
Piece only  
**49<sup>99</sup>**

- With easy care cotton lining in the back
- High freedom of movement due to share of spandex
- Easy to care and to iron
- Modern pinstripe pattern

► Blouse & Shirt Delano p. 65,  
Waiter chain p. 82, Trousers Chino p. 80

► More information [www.em-group.com](http://www.em-group.com)

The comeback of pinstripes! The classic business-pattern shows itself versatile in the service. Whether styled casually or elegantly: With the fine stripes you score in all aspects.

**!** Small changes in color and washing are possible and ensure a unique look over time.



Men

Women

WOVEN  
PINSTRIPE

**Vest Pinstripe**

Vest for women and men with classic pinstripe pattern, lapel collar, three piped pockets and adjustable back strap. With share of spandex for comfortable wearing. Women's model is cut slightly waisted. Easy to care for and easy to iron. With cotton lining in the back.

96% cotton, 2% polyester, 2% spandex. 30 °C wash.

Back length women: 49 cm at size 36.

Back length men: 60 cm at size 50.

■ Color: dark blue

■ Size women: 34, 36, 38, 40, 42, 44, 46

■ Size men: 44, 46, 48, 50, 52, 54, 56, 58, 60

Women

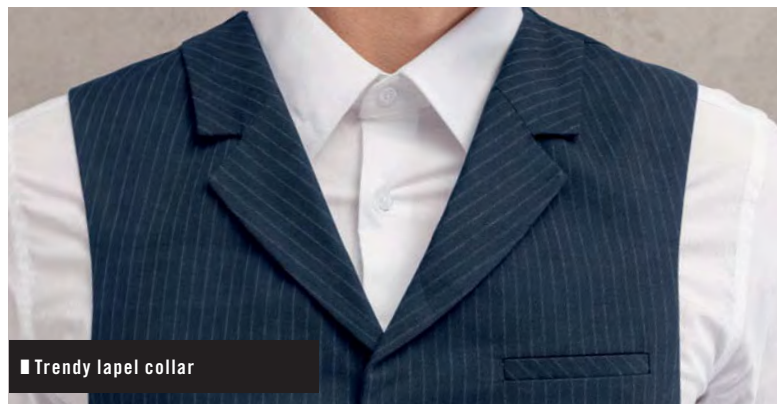
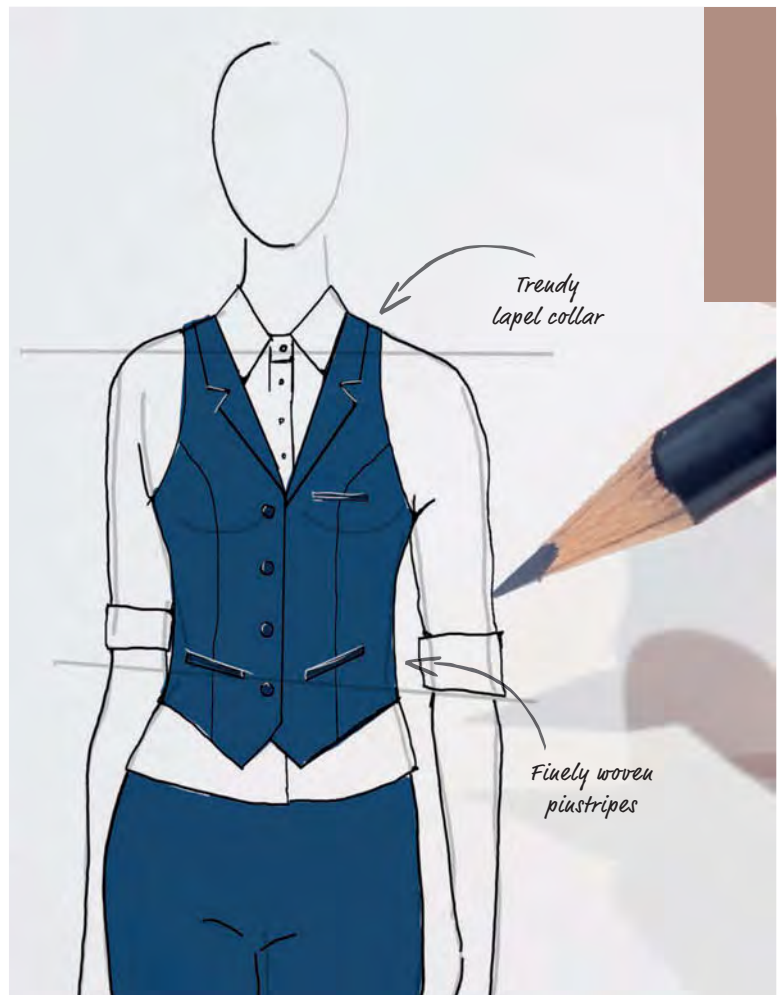
124888

Piece: 49,99

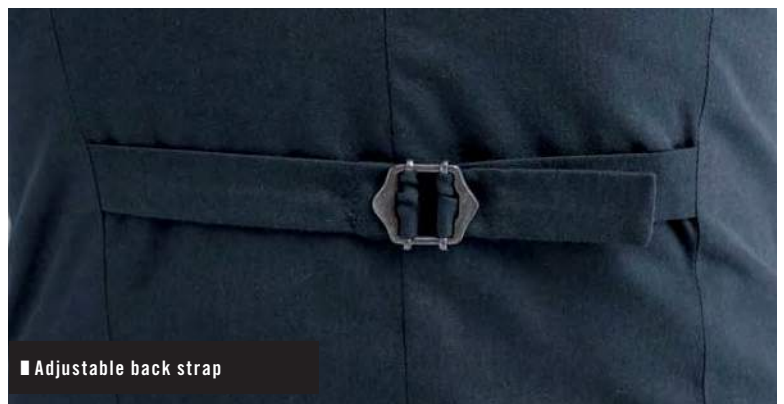
Men

124897

Piece: 49,99



■ Trendy lapel collar



■ Adjustable back strap

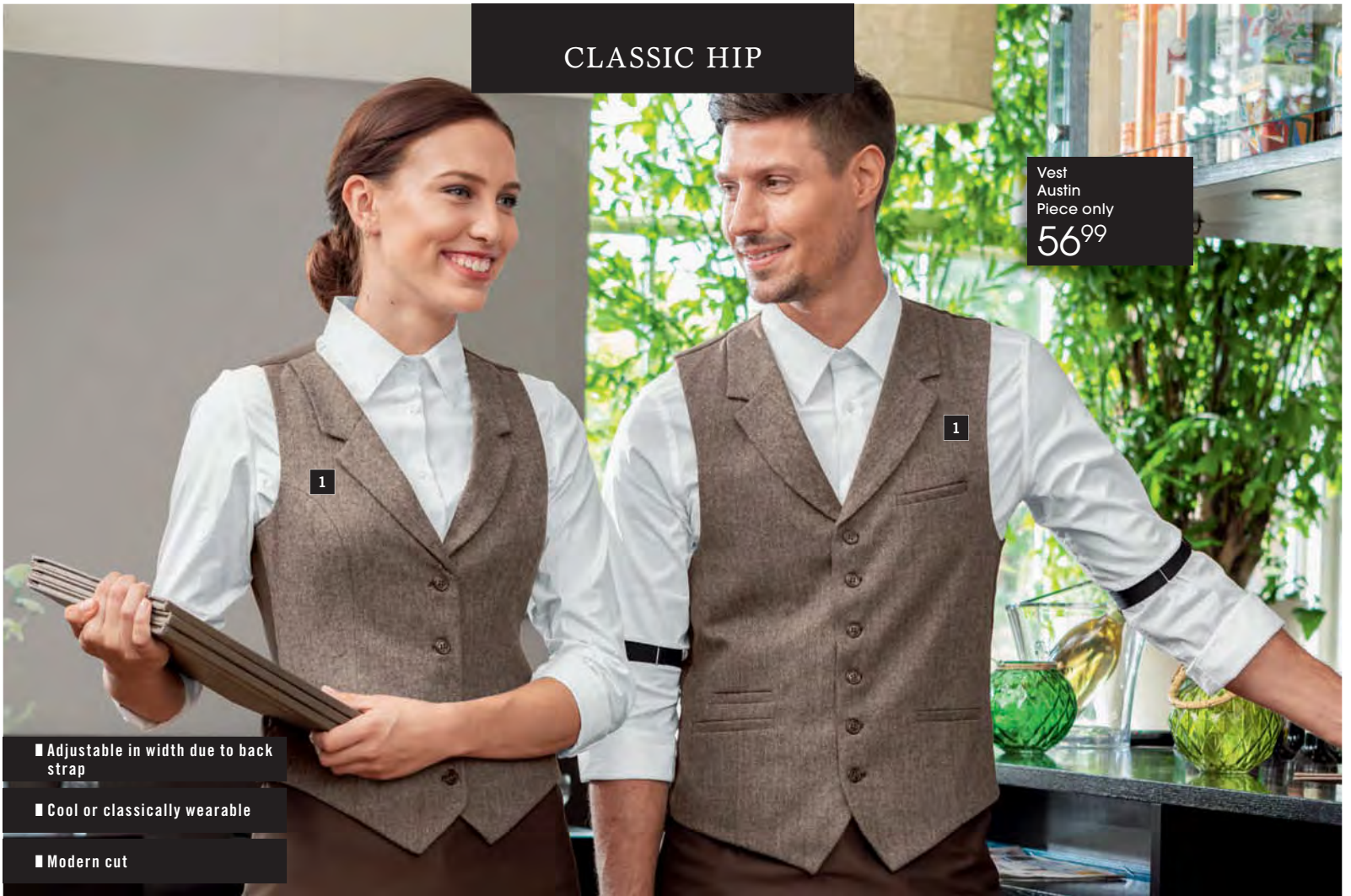


**YOUR BENEFIT  
WITH PINSTRIPE**

Perfect fit and high wearing comfort thanks to share of spandex: Like this you feel good!

## CLASSIC HIP

Vest  
Austin  
Piece only  
**56<sup>99</sup>**



■ Adjustable in width due to back strap

■ Cool or classically wearable

■ Modern cut



Vest  
Lagos  
Piece only  
**49<sup>99</sup>**

**NEW  
COLLECTION**

▶ Shirt & Blouse Delano p. 65, Tie Bo slim p. 83

PERMANENTLY  
REDUCED  
IN PRICE!



Men



Men



Men



HERRINGBONE  
STRUCTURE



Women

1



Women

2



JACQUARD  
FABRIC



Women

3

! Style update: Vest Austin is now available with modernized cut.

■ High wearing comfort due to share of spandex

■ Adjustable in width due to back strap

■ Easy to care and to iron

■ Particularly easy care

■ Robust and fast-drying

■ Men's vest with inner pocket

### 1 Vest Austin

Modern waisted vest with lapel collar for women and men, available with brown herringbone structure or made of black satin-stretch material. Darts in front and back part, 2 piped pockets, fully lined, adjustable back strap.

**Brown:** 60% wool, 40% polyester. 30 °C wash.

**Black:** 97% cotton, 3% spandex. 30 °C wash.

**Back length women:** 53,5 cm at size 36.

**Back length men:** 61,5 cm at size 50.

■ **Color:** brown, black

■ **Size women:** 34, 36, 38, 40, 42, 44, 46

■ **Size men:** 44, 46, 48, 50, 52, 54, 56, 58, 60

Women, brown	124803	Piece: 56,99
Men, brown	124853	Piece: 56,99
Women, black	124797	Piece: 49,99
Men, black	124852	Piece: 49,99

### 2 Vest Lagos

Black, noble vest for women and men with share of spandex and back made of polyester. With adjustable back strap and three piped pockets. Women's model is cut slightly waisted.

**53% polyester, 43% wool, 4% spandex. 30 °C wash.**

**Back length women:** 50 cm at size 36.

**Back length men:** 60 cm at size 50.

■ **Color:** black

■ **Size women:** 34, 36, 38, 40, 42, 44, 46, 48, 50

■ **Size men:** 44, 46, 48, 50, 52, 54, 56, 58, 60, 62, 64

Women	125015	Piece: 49,99
Men	125016	Piece: 49,99

### 3 Vest Classic

Jacquard vest made of easy care polyester-blended fabric in 5-button shape with black taffeta back and back strap. Women's vest: 2 piped outer pockets. Men's vest: 3 piped outer pockets and 1 inner chest pocket.

**100% polyester. 30 °C wash.**

**Back length women:** 56 cm at size 36.

**Back length men:** 67 cm at size 50.

■ **Color:** bordeaux, black

■ **Size women:** 34, 36, 38, 40, 42, 44, 46, 48, 50

■ **Size men:** 44, 46, 48, 50, 52, 54, 56, 58, 60

Women	100318	Piece: 36,99
Men	100319	Piece: 36,99



brown

black



bordeaux

black



## CHIC KNITWEAR

Cardigan  
Cecilia  
Piece only  
**69<sup>99</sup>**

1

▶ p. 81

▶ Tie Bo slim p. 83, Cashier holster Rio p. 82

Slip-over  
Mirco  
Piece only  
**54<sup>99</sup>**

2

▶ Shirt Chambray p. 52

Slip-over  
Solaro  
Piece only  
**59<sup>99</sup>**

3

■ High-quality Merino wool  
Extrafine

■ Neutralizes odors

■ Washable



## YOUR BENEFIT WITH CECILIA & CRISTIANO

- Modernized fit and better material, now with share of Merino Extrafine wool for a perfectly soft feeling on the skin without scratching
- Real, fine Merino wool with breathable and temperature compensating effect. Like this you will feel good
- Wool neutralizes odors: No sweat odor



! Style update: Modernized fit and cut. Now also with share of Merino Extrafine wool.



- High-quality wool: Merino Extrafine
- Dimensionally stable and washable
- Soft and lightweight

Slip-over  
Miranda & Mirco  
Piece only  
**54.99**

**1 Cardigan Cecilia & Cristiano**

This classic cardigan for women and men made of high-quality Merino Extrafine wool is fashionably presented with V-neck and button tape. The cardigan has ribbed cuffs on the sleeves. 50% wool, 50% polyacrylic. 40 °C gentle wash.  
**Back length women: 64 cm at size S.**  
**Back length men: 69 cm at size M.**  
 ■ Color: grey, black  
 ■ Size women: XS, S, M, L, XL  
 ■ Size men: S, M, L, XL, 2XL  
 Long sleeve women 125323 **Piece: 69,99**  
 Long sleeve men 125324 **Piece: 69,99**

**2 Slip-over Miranda & Mirco**

Fashionable women's and men's slip-over made of high-quality Merino Extrafine wool, which impresses with its timeless design. Small fine ribbed cuffs on hem, neckline and armhole. 50% wool, 50% polyacrylic. 40 °C gentle wash.  
**Back length women: 64 cm at size S.**  
**Back length men: 69 cm at size M.**  
 ■ Color: grey, black  
 ■ Size women: XS, S, M, L, XL  
 ■ Size men: S, M, L, XL, 2XL  
 Sleeveless women 125326 **Piece: 54,99**  
 Sleeveless men 125325 **Piece: 54,99**

**3 Pullover Sofia & Solaro**

Easy care women's and men's pullover with V-neck made of high-quality Merino Extrafine wool. The pullover has ribbed cuffs on the sleeves. 50% wool, 50% polyacrylic. 40 °C gentle wash.  
**Back length women: 64 cm at size S.**  
**Back length men: 69 cm at size M.**  
 ■ Color: grey, black  
 ■ Size women: XS, S, M, L, XL  
 ■ Size men: S, M, L, XL, 2XL  
 Long sleeve women 125327 **Piece: 59,99**  
 Long sleeve men 125328 **Piece: 59,99**



# KNITWEAR

## SERVICE WONDER

Service jacket  
May  
Piece only  
**49<sup>99</sup>**

▶ p. 81

■ Elegant light denim

■ Dimensionally stable

▶ p. 81



WWW.WERIN-TEC.COM

► More info p. 112



Men



Women

### Service jacket May

Service jacket for men and women with two large belly pockets, attached buttons (in denim with press buttons) and back slit. Men's model with chest pocket. The black and white jackets are made of innovative WERIN® TEC Light material: This makes the jacket breathable, dries quickly and actively manages moisture. The denim jackets have decorative epaulettes.

**White & black:** 58% cotton, 42% polyester. 180 g/m². 60 °C wash.

**Denim light:** 100% cotton. 255 g/m². 40 °C wash.

**Back length women:** 65 cm at size 36.

**Back length men:** 75 cm at size 50.

■ **Color:** white, black, denim light

■ **Size women:** 34, 36, 38, 40, 42, 44, 46, 48, 50

■ **Size men:** 44, 46, 48, 50, 52, 54, 56, 58, 60

Women, white & black 120055

Piece: 49,99

Men, white & black 120057

Piece: 49,99

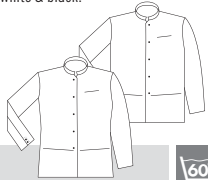
Women, denim light 120056

Piece: 49,99

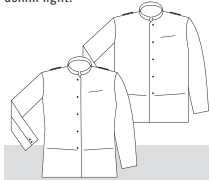
Men, denim light 120058

Piece: 49,99

white & black:



denim light:



■ Breathable due to active moisture management

■ Fast-drying surface



## BEST OF MARKET 2018



Our winner: Service jacket May got the prize „Best of Market“ 2018 in the category design-product. The jury particularly praised the specially for JOBELINE developed function material WERIN® TEC Light.

# SERVICE JACKETS

# SERVICE TROUSERS



Trousers  
Chino  
Piece only

59<sup>99</sup>



Women

Men

## 1 Trousers Chino

Casual chino trousers for women and men with share of stretch for extra wearing comfort. Elastic tape in the waistband prevents slipping out of blouses and shirts. Practical pockets with integrated pen pocket on the right and buttoned hip pockets. Straight cut leg.

97% cotton, 3% spandex. 30 °C wash.

Inseam length women: 78 cm at size 36.

Inseam length men: 84 cm at size 50.

■ Color: white **NEW**, beige, khaki **NEW**, navy

■ Size women: 34, 36, 38, 40, 42, 44, 46

■ Size men: 44, 46, 48, 50, 52, 54, 56, 58, 60

Women 117516 Piece: 59,99

Men 117517 Piece: 59,99

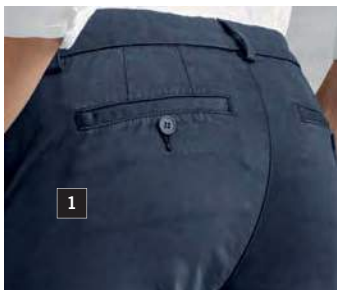


white beige khaki navy

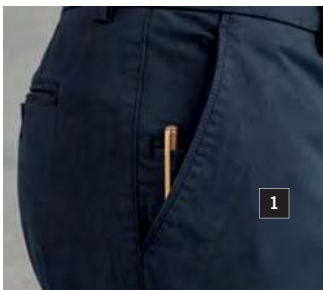
► Vest Limerick p. 69



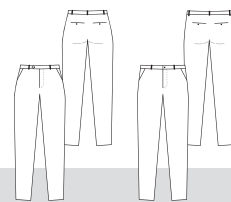
■ Elastic tape in waistband



■ 2 buttoned hip pockets



■ Integrated pen pocket



**NEW  
COLLECTION**

PERMANENTLY  
REDUCED  
IN PRICE!



2  
Men

Women



3  
Men

Women

**2 Jeans Jaden**

Jeans with modern washing for women and men, with slightly tapering leg and modern cut. Five-Pocket-Style: 2 round front pockets, 2 patch hip pockets, coin pocket in the right front pocket. 5 belt loops. Zipper in the front center. 99% cotton (denim), 1% spandex. 40 °C wash.

Inseam length women: 77cm at size 36.

Inseam length men: 82 cm at size 50.

■ Color: blue, dark grey

■ Size women: 34, 36, 38, 40, 42, 44, 46

■ Size men: 44, 46, 48, 50, 52, 54, 56, 58, 60

Women 124908  
Men 124912

Piece: 49,99  
Piece: 49,99

**3 Jeans Dover**

Jeans for women and men. Women's jeans: Narrow leg, 2 round front pockets, 2 patch hip pockets, 6 belt loops, zipper in front center. Men's jeans: Straight cut leg, 5 belt loops, 2 round front pockets, 2 patch hip pockets, zipper in front center.

White & black: 97% cotton (denim), 3% spandex. 60 °C wash.

Blue: 98% cotton (denim), 2% spandex. 40 °C wash.

Inseam length women: 81 cm at size 36.

Inseam length men: 82 cm at size 50.

■ Color: white, blue, black

■ Size women: 34, 36, 38, 40, 42, 44, 46, 48, 50

■ Size men: 44, 46, 48, 50, 52, 54, 56, 58, 60

Women, white & black 117522 Piece: 44,99  
Men, white & black 101716 Piece: 44,99  
Women, blue 119268 Piece: 44,99  
Men, blue 119269 Piece: 44,99



Jeans  
Dover  
Piece only  
44<sup>99</sup>

■ With share of spandex for optimal freedom of movement



Jeans  
Jaden  
Piece only  
49<sup>99</sup>

■ Narrow tapering leg



blue dark grey

white blue black

40° EASY

EASY

white & black: 60° blue: 40°



■ Rear view



■ Rear view

**TROUSERS**

# ACCESSORIES



**NEW  
COLLECTION**



Sleeve holder  
Pair only  
**16<sup>99</sup>**

## 1 Cashier holster Anton

Black cashier holster made of real leather with two large compartments for purse and notepad. At the back there is another compartment with velcro closure. On the right, a strap ensures that you always have your pen close at hand.

**Leather.**

■ Color: black  
■ Size: 13x26 cm (HxW)

120080 Piece: 29,99

## 2 Cashier holster Tom

Cashier holster with 3 compartments for pen, purse and notepad.

**Leather.**

■ Color: black  
■ Size: 15x20 cm (HxW)

100209 Piece: 13,99

## 3 Cashier holster Jerry

Cashier holster with noble JOBELINE embossing and 3 compartments for pen, purse and notepad.

**Leather.**

■ Color: black  
■ Size: 16x27 cm (HxW)

101268 Piece: 19,99

## 4 Wallet Salzburg

Wallet with 6 inner compartments, coin pocket, zipper and outer pocket.

**Leather.**

■ Color: black  
■ Size: 11,5x18,5 cm (HxW)

100462 Piece: 24,99

## 5 Wallet Fred

Black wallet made of real leather with six compartments for different bank notes, one compartment for coins, zipper pocket and compartment on the outside. Practical: The closure is adjustable in size – depending on how full the wallet is.

**Leather.**

■ Color: black  
■ Size: 10,5x17,5 cm (HxW)

120078 Piece: 39,99

## 6 Waiter chain

For cash desk keys and pens, 60 cm long with simple hook and key ring.

■ Color: silver

100212 Piece: 3,49

## 7 Suspenders

Suspenders in trendy Y-shape with 3 metal buckles. Wearing width: 2.5 cm.

**Polyester-spandex blend.**

■ Color: brown, black

brown 118728 Piece: 19,99  
black 115659 Piece: 19,99

## 8 Suspenders with leather detail

Suspenders in trendy Y-shape with details made of real leather. Adjustable in length due to a metal loop. Wearing width: 2.5 cm.

**Polyester-spandex blend.**

■ Color: bordeaux, navy

■ Length: 110 cm (suitable for body height up to max. 175 cm),  
120 cm (suitable for body height from 175 cm)

124898 Piece: 29,99

## 9 Bow tie Marco

Bow tie with adjustable width.

**100% polyester.**

■ Color: bordeaux, black

115955 Piece: 6,99

## 10 Bow Alva

Bow with adjustable elastic band for comfortable wearing around the neck.

**100% polyester. 30 °C wash.**

■ Color: black

101661 Piece: 9,99

## 11 Sleeve holder

Adjustable, elastic sleeve holder for arm circumference of max. 39 cm, available in comfortable width of 2.5 cm with practical clip closure for width adjustment.

■ Color: black

117222 Pair: 16,99

## 12 Cashier holster Rio

Cashier holster with compartment for wallet, notepad and pen.

**Colored: 65% polyester, 35% cotton. 60 °C wash.**

**Denim: 100% cotton. 40 °C wash.**

■ Color: taupe, black, denim

■ Size: 15,5x24,5 cm (l x w)

Colored: 15,5x24,5 cm (l x w) 100210 Piece: 8,99  
Denim: 15,5x24,5 cm (l x w) 118750 Piece: 14,99

## 13 Belt pouch

Trendy belt pouch with 3 patch pockets, 1 integrated zipper pocket, universally adjustable width of waistband and clip closure. The backside is completely lined.

**Colored: 65% polyester, 35% cotton. 60 °C wash.**

**Denim: 100% cotton. 40 °C wash.**

■ Color: bordeaux, black, denim

■ Size: 40x25 cm (l x w)

Colored: 40x25 cm (l x w) 101057 Piece: 10,99  
Denim: 40x25 cm (l x w) 117223 Piece: 16,99



mango red bordeaux blackberry apple green moss green olive



dark blue navy sand taupe coca light grey grey



graphite black black/white black



bordeaux grey black denim



bordeaux taupe black



taupe coca graphite black



Tie Color Piece only 13.49

**14 Service tie Terry**

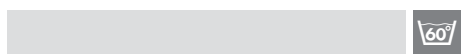
Service tie in plain or striped with finished loop.  
**Plain:** 65% polyester, 35% cotton. 60 °C wash.  
**Black/white striped:** 100% cotton. 60 °C wash.  
**Color:** mango, red, bordeaux, blackberry, apple green, moss green, olive **NEW**, dark blue **NEW**, navy, sand, taupe, coca, light grey **NEW**, grey, graphite, black, black/white

Plain	100578	Piece: 5,99
Black/white striped	117215	Piece: 5,99

**NEW - Buy more. Save more.**

from 10 pieces*	from 20 pieces*
4,99	3,99
Save 16%!	Save 33%!

\*if same color



**16 Tie Bo slim**

Plain tie. Width: 5 cm.  
**Colored:** 65% polyester, 35% cotton. 60 °C wash.  
**Denim:** 100% cotton. 40 °C wash.  
**Color:** bordeaux, grey, black, denim

Colored	117211	Piece: 7,99
Denim	115961	Piece: 14,99

**NEW - Buy more. Save more.**

from 10 pieces*	from 20 pieces*
Colored: 6,99	5,99
Save 12%!	Save 25%!

\*if same color



**18 Tie Bo**

Plain tie, color matching to our assortment. Width: 9 cm.  
**65% polyester, 35% cotton. 60 °C wash.**  
**Color:** mango, bordeaux, blackberry, apple green, moss green, taupe, coca, graphite, black

101138	Piece: 8,49
--------	-------------

**NEW - Buy more. Save more.**

from 10 pieces*	from 20 pieces*
7,49	6,49
Save 11%!	Save 23%!

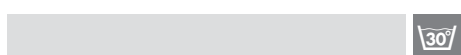
\*if same color



**15 Service tie Terry Satin**

Service tie made of high-quality satin material.  
**100% polyester. 30 °C wash.**  
**Color:** black

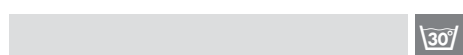
101761	Piece: 7,99
--------	-------------



**17 Tie Color slim**

Slim tie in different colors.  
**100% polyester. 30 °C wash.**  
**Color:** bordeaux, taupe, black

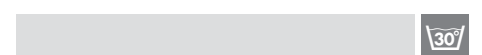
100495	Piece: 13,49
--------	--------------



**19 Tie Color**

Plain tie.  
**100% polyester. 30 °C wash.**  
**Color:** bordeaux, taupe, black

117214	Piece: 13,49
--------	--------------



# ACCESSORIES

Convince at the first glance

# RECEPTION

The timeless classic outfits of JOBELINE create trust and radiate reliability. Like this, your guests will feel like at home!

4





**NEW  
COLLECTION**



**1 Blazer Carina**

Short trendy blazer with lapel collar, integrated piped pockets, an inner pocket on the left, sleeve with 2 seams and slit in the back centre. Completely lined. Shaping darts in the front and back part, decorative buttons on the cuffs.

38% polyester, 30% wool, 30% viscose, 2% spandex. 30 °C gentle wash.

Back length: 60 cm at size 36.

■ Color: dark blue, black

■ Size: 34, 36, 38, 40, 42, 44, 46, 48, 50

Long sleeve women

125013

Piece: 99,99

**2 Blazer Kairi**

Waisted women's blazer with lapel collar and integrated piped pockets, sleeve with 2 seams and slit in the back centre, completely lined, made of easy care material. Shaping darts in the front and back part, decorative buttons on the cuffs.

38% polyester, 30% wool, 30% viscose, 2% spandex. 30 °C gentle wash.

Back length: 62 cm at size 36.

■ Color: dark blue, black

■ Size: 34, 36, 38, 40, 42, 44, 46

Long sleeve women

101622

Piece: 109,00

**3 Blazer Mona**

Short trendy blazer in box shape, with stand-up collar, two patch pockets, sleeve with 2 seams and shaping seams in the front and back parts. Completely lined.

38% polyester, 30% wool, 30% viscose, 2% spandex. 30 °C gentle wash.

Back length: 54 cm at size 36.

■ Color: dark blue, black

■ Size: 34, 36, 38, 40, 42, 44, 46

Long sleeve women

125014

Piece: 119,00



dark blue

black



dark blue

black



dark blue

black

**4 Sheath dress Leona**

Dress with short sleeves and shaping seams in the front and back part. Integrated slit, seam and zipper in the back center. Completely lined. Top: Lining made of 100% cotton. Skirt: Lining made of supple and slightly elastic polyester.

38% polyester, 30% wool, 30% viscose, 2% spandex. 30 °C gentle wash.

Dress length: 94 cm at size 36.

■ Color: dark blue, black

■ Size: 34, 36, 38, 40, 42, 44, 46, 48, 50

125017

Piece: 79,99



dark blue

black

## FOR A PERFECT FIRST IMPRESSION

Your reception staff is the flagship of your hotel. Therefore, a perfect first impression is most important.

This is guaranteed with the reception clothing by JOBELINE, for example, with the slightly waisted dress Leona with its beautiful fit. The big benefit of our reception clothing: All clothes are easy to clean, crease-resistant and easy to iron. And you can even clean jackets and blazers on your own in the washing machine.

CREASE-RESISTANT APPEARANCE

Vest  
Sidney  
Piece only  
**59,99**



1

5

■ High wearing comfort due to share of spandex

■ Crease-resistant material

■ Washable at 30 °C gentle wash



■ High wearing comfort due to share of spandex

■ Crease-resistant material

■ Easy to iron

**1 Vest Sidney**

Women's vest with taffeta back made of easy care material with piped pockets, adjustable back strap and shaping darts in the front and back. Completely lined.

**38% polyester, 30% wool, 30% viscose, 2% spandex. 30 °C gentle wash.**

**Back length: 57 cm at size 36.**

■ **Color:** dark blue, black

■ **Size:** 34, 36, 38, 40, 42, 44, 46, 48, 50

Sleeveless women

124851

Piece: 59,99



**2 Scarf Kelly**

Our scarves are available in many different colors, matching to our ties. As they put the finishing touch on every outfit, there are no limits to your creativity.

**100% polyester. 30 °C wash.**

■ **Color:** bordeaux, blackberry, light blue, blue, black

■ **Size:** 50x50 cm (1 x w)

117217

Piece: 19,99



bordeaux blackberry light blue blue black



! Style update: Sidney, Semra, Linea now available with improved fit and modernized cut.

Trousers  
Nayla  
Piece only  
**64<sup>99</sup>**

Trousers  
Malin  
Piece only  
**64<sup>99</sup>**

Skirt  
Linea  
Piece only  
**59<sup>99</sup>**



■ Elastic band in waistband

**3 Skirt Linea**  
Trendy women's skirt with comfortable waistband, integrated shaping seams and zipper in the back center. Completely lined. With inner lining with share of spandex and integrated slit in the back center for optimal freedom of movement.  
38% polyester, 30% wool, 30% viscose, 2% spandex. 30 °C gentle wash.  
Skirt length: 48 cm at size 36.  
■ Color: dark blue, black  
■ Size: 34, 36, 38, 40, 42, 44, 46

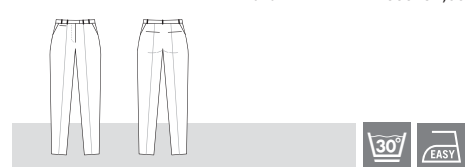
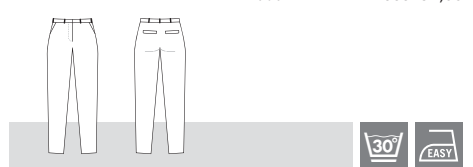
**5 Trousers Nayla**  
Fashionable women's trousers with narrow cut leg and insertion pockets in the front and belt loops. Integrated flap pockets on the buttocks. Elastic band in the waistband prevents slipping out of blouses.  
38% polyester, 30% wool, 30% viscose, 2% spandex. 30 °C gentle wash.  
Inseam length: 79 cm at size 36.  
■ Color: dark blue, black  
■ Size: 34, 36, 38, 40, 42, 44, 46

**6 Trousers Malin**  
Fashionable women's trousers with wide cut leg, creases and pockets in the front, as well as a billet pocket and belt loops. Piped pockets on the buttocks. Elastic band in the waistband prevents slipping out of blouses.  
38% polyester, 30% wool, 30% viscose, 2% spandex. 30 °C gentle wash.  
Inseam length: 81 cm at size 36.  
■ Color: dark blue, black  
■ Size: 34, 36, 38, 40, 42, 44, 46, 48, 50

124790 Piece: 59,99

115354 Piece: 64,99

101624 Piece: 64,99



**4 Skirt Semra**  
Trendy women's skirt with comfortable waistband, integrated shaping seams and zipper in the back center. Inner lining with share of spandex and integrated slit in the back center for optimal freedom of movement. Completely lined.  
38% polyester, 30% wool, 30% viscose, 2% spandex. 30 °C gentle wash.  
Skirt length: 56 cm at size 36.  
■ Color: dark blue, black  
■ Size: 34, 36, 38, 40, 42, 44, 46, 48, 50



124792 Piece: 59,99

# MIX & MATCH

TIMELESS CLASSIC

Jacket  
Piero  
Piece only  
11900



YOUR BENEFIT  
WITH PIERO

Fast-drying, easy to iron, washable in the washing machine: Save the costs for the laundry service!

▶ Shirt Marc p. 61



■ High freedom of movement due to share of spandex

■ Crease-resistant material

■ Completely lined

■ Inside pocket

Trousers  
Finley  
Piece only  
**69<sup>99</sup>**



■ Crease-resistant

■ Very comfortable due to share of spandex

■ Elastic band in waistband

Vest  
Sidney  
Piece only  
**59<sup>99</sup>**



**1 Jacket Piero**

2-button jacket with integrated flap pockets and lapel collar, sleeve with 2 seams with patch decorative buttons on cuffs, completely lined. Intricately integrated inside pockets and stylishly finished interior piping.

**38% polyester, 30% wool, 30% viscose, 2% spandex. 30 °C gentle wash.**

**Back length: 76 cm at size 50.**

■ **Color:** dark blue, black

■ **Size:** 44, 46, 48, 50, 52, 54, 56, 58, 60

Long sleeve men

101630

Piece: 119,00



**2 Vest Sidney**

Men's vest with taffeta back made of easy care material with chest pocket, piped pockets and adjustable back strap, completely lined.

**38% polyester, 30% wool, 30% viscose, 2% spandex. 30 °C gentle wash.**

**Back length: 61 cm at size 50.**

■ **Color:** dark blue, black

■ **Size:** 44, 46, 48, 50, 52, 54, 56, 58, 60

Sleeveless men

101934

Piece: 59,99



**3 Trousers Finley**

Men's trousers made of easy care material, matching to men's jacket Piero, with classic leg width, lined in the front and crease. Integrated hip pockets, belt loops and button closure at waistband. Trouser's hem with attached bumper (inside). Elastic band in waistband prevents slipping out of shirts.

**38% polyester, 30% wool, 30% viscose, 2% spandex. 30 °C gentle wash.**

**Inseam length: 83,5 cm at size 50.**

■ **Color:** dark blue, black

■ **Size:** 44, 46, 48, 50, 52, 54, 56, 58, 60

101658

Piece: 69,99



Fresh styles and fresh goods

# SALES

JOBELINE combines fashion and hygiene. Our smocks and aprons are absolutely stylish and very easy to clean.





ADJUSTABLE  
IN WIDTH

1

- Large practical pockets
- Comfortable lightweight fabric



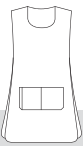
Men

Women

### 1 Apron Mina

Striped apron in 2 colors. Patch, 2-part pocket incl. 2 pen pockets. Adjustable due to straps on the sides.  
**65% polyester, 35% cotton. 60 °C wash.**  
**Back length: 89 cm.**  
 ■ Color: bordeaux/white, navy/white  
 ■ Size: one size

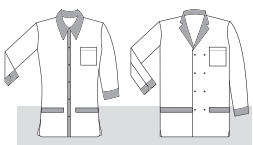
Sleeveless 120185 Piece: 14,99



### 2 Smock Alfie

Striped smock for women and men in 2 colors. Women's model is slightly waisted and has 3/4 sleeves. The straight cut men's model has long sleeves with classic french cuff. Both models with hanging loop, chest pocket, two belly pockets and press button closure. The striped pattern is woven and therefore very durable.  
**65% polyester, 35% cotton. 60 °C wash.**  
**Back length women: 74 cm at size 36.**  
**Back length men: 79 cm at size 50.**  
 ■ Color: bordeaux/white, navy/white  
 ■ Size women: 34, 36, 38, 40, 42, 44, 46, 48, 50, 52, 54, 56  
 ■ Size men: 44, 46, 48, 50, 52, 54, 56, 58, 60, 62, 64, 66

3/4 sleeve women 120181 Piece: 29,99  
 Long sleeve men 120182 Piece: 29,99



Smock  
Alfie  
Piece only  
**29,99**

VERY FUNCTIONAL



► Jeans Dover p. 81



**1 Service tie Terry**

Service tie with finished loop.  
65% polyester, 35% cotton. 60 °C wash.

■ Color: white, bordeaux, navy, black

100578

Piece: 5,99

**NEW - Buy more. Save more.**

from 10 pieces*	from 20 pieces*
4,99	3,99
Save 16%!	Save 33%!

\*if same color

► all colors p. 83



Vest Lenn  
Piece only  
**29<sup>99</sup>**

► Blouse & Shirt Harper p. 55

**2 Sweat jacket Saloa**

Comfortable sweat jacket with zipper for men and women. Two zipped belly pockets, two-part pen pocket on sleeve, loop on the side next to insertion pocket. Women's model is slightly waisted, men's model is cut straightly. Make your sweat jackets distinctive - please use our embroidery service

47% cotton, 47% polyester, 6% spandex. 40 °C wash.

Back length women: 59 cm at size S.

Back length men: 68 cm at size M.

■ Color: black

■ Size women: XS, S, M, L, XL, 2XL

■ Size men: S, M, L, XL, 2XL, 3XL

Long sleeve women

120194

Piece: 29,99

Long sleeve men

120187

Piece: 29,99



**3 Vest Lenn**

Black vest for men and women with cord inserts on the shoulders. Two-way zipper, hanging loop and two belly pockets with press button closure. Women's model is slightly waisted. Straight cut men's model also has a chest pocket with velcro closure. Robust and easy to care for.

65% polyester, 35% cotton. 40 °C wash.

Cord: 100% cotton. 40 °C wash.

Back length women: 63 cm at size S.

Back length men: 70 cm at size M.

■ Color: black

■ Size women: XS, S, M, L, XL, 2XL

■ Size men: S, M, L, XL, 2XL, 3XL

Sleeveless women

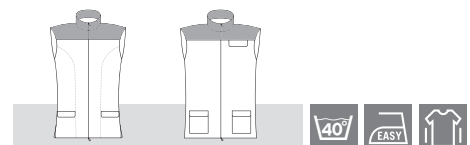
120151

Piece: 29,99

Sleeveless men

120153

Piece: 29,99







Men

Women

Sweat jacket  
Saloa  
Piece only  
**29<sup>99</sup>**

- Suitable for embroidery
- 2-part pen pocket on upper arm
- Easy care



Men

Women

**NEW  
COLLECTION**



**CORD  
INSERT**

- 2-way zipper
- Large patch pockets



Trousers  
Griffin  
Piece only  
**44<sup>99</sup>**



[WWW.WERIN-TEC.COM](http://WWW.WERIN-TEC.COM)

► More info p. 112

- Several practical pockets
- High freedom of movement due to share of spandex
- Breathable

**4 Trousers Griffin**

Black cargo trousers for men and women with two insertion pockets on the side and large cargo pocket on which another pocket and a pen pocket are placed. On the back: Two hip pockets with velcro closure and another double, patch pocket on the right leg. Straight cut leg, belt loops, stretchable waistband. Easy care material.

76% cotton, 24% polyester. 60 °C wash.

Inseam length women: 80 cm at size 36.

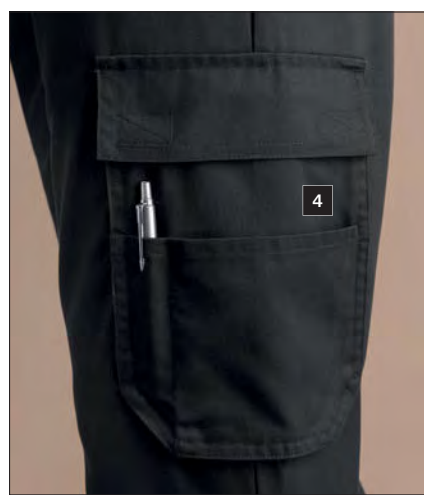
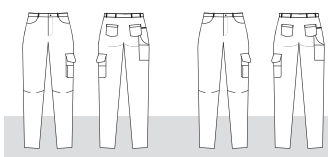
Inseam length men: 80 cm at size 50.

■ Color: black

■ Size women: 34, 36, 38, 40, 42, 44, 46, 48, 50, 52, 54, 56

■ Size men: 44, 46, 48, 50, 52, 54, 56, 58, 60, 62, 64, 66

Women	120202	Piece: 44,99
Men	120198	Piece: 44,99



■ Cargo pocket with further patch pockets

## IN ALL WEATHERS

Fleece jacket  
Kem  
Piece only  
**32<sup>99</sup>**



Men

Women

- Pleasantly warm
- Lightweight & breathable



Quilted jacket  
Jove  
Piece only  
**49<sup>99</sup>**



■ Zipper garage to protect the chin, with stand-up collar

■ Chest pocket at men's jacket with practical zipper

### 1 Fleece jacket Kem

Breathable microfleece jacket for men and women with stand-up collar, 2 zipped pockets on the side and 2 inner pockets. Easy care & fast-drying.

100% polyester. 210 g/m<sup>2</sup>. 30 °C wash.

Back length women: 65 cm at size S.

Back length men: 71 cm at size M.

■ Color: black

■ Size women: XS, S, M, L, XL

■ Size men: S, M, L, XL, 2XL



Long sleeve women 101474

Piece: 32,99

Long sleeve men 101475

Piece: 32,99

### 2 Quilted jacket Jove

Windproof and water-repellent quilted jacket for women and men with 2-way zipper on the front, 2 zipped pockets on the side and an inside pocket with velcro closure. Easy care.

Outer fabric: 100% polyamide. 30 °C wash.

Lining: 100% polyester. 30 °C wash.

Back length women: 65 cm at size S.

Back length men: 66 cm at size M.

■ Color: black

■ Size women: XS, S, M, L, XL

■ Size men: S, M, L, XL, 2XL



Sleeveless women 101476

Piece: 49,99

Sleeveless men 101477

Piece: 49,99

PERMANENTLY  
REDUCED  
IN PRICE!

Softshell jacket  
Blanc  
Piece only  
**59<sup>99</sup>**

Down jacket  
Everest  
Piece only  
**76<sup>99</sup>**



Men

2

Women



Men

3

Women

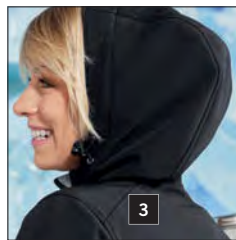


Men

4

Women

- Windproof and water-repellent
- 2 pockets on the side
- Easy care



3

■ Hood with microfleece lining

- Windproof and water-repellent
- Breathable
- Microfleece lining
- Slightly elastic for high wearing comfort



4

■ Inside pocket

- Windproof and water-repellent
- High-quality down filling
- Hood with elastics

### 3 Softshell jacket Blanc

Windproof and water-repellent softshell jacket for men and women, breathable and easy care, with hood. Chest pocket and 2 pockets on the side each with glued zipper. Sleeve width adjustable due to velcro closure. Jacket is equipped with microfleece lining and mesh insert inside and can be closed by 2-way zipper with zipper garage. Women's jacket is slightly waisted. Water column 8000 mm.

94% polyester, 6% spandex. 30 °C wash.

Back length women: 65 cm at size S.

Back length men: 73 cm at size M.

■ Color: black

■ Size women: XS, S, M, L, XL

■ Size men: S, M, L, XL, 2XL

Long sleeve women

101480

Piece: 59,99

Long sleeve men

101481

Piece: 59,99



### 4 Down jacket Everest

Very lightweight down jacket for women and men with quilting, 2 pockets on the side which are closable by zipper and 2 inside pockets. Wide flexible cuffs, hood with soft edging, easy care, windproof and water-repellent.

Outer fabric: 100% polyamide. 30 °C wash.

Filling: 90% down, 10% feathers. 30 °C wash.

Back length women: 65 cm at size S.

Back length men: 69 cm at size M.

■ Color: black

■ Size women: XS, S, M, L, XL

■ Size men: S, M, L, XL, 2XL

Long sleeve women

101472

Piece: 76,99

Long sleeve men

101473

Piece: 76,99

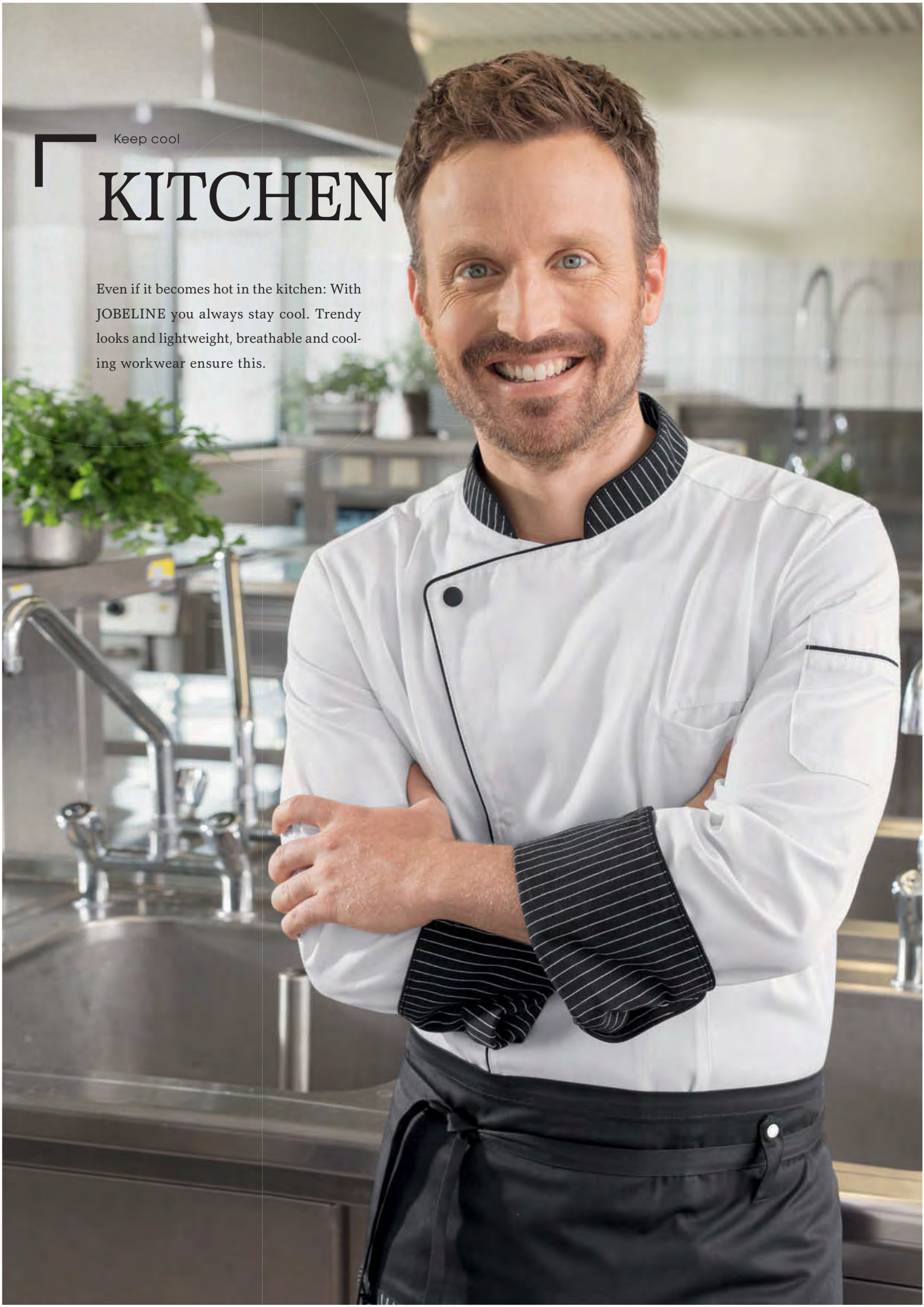


# OUTDOOR JACKETS

Keep cool

# KITCHEN

Even if it becomes hot in the kitchen: With JOBELINE you always stay cool. Trendy looks and lightweight, breathable and cooling workwear ensure this.





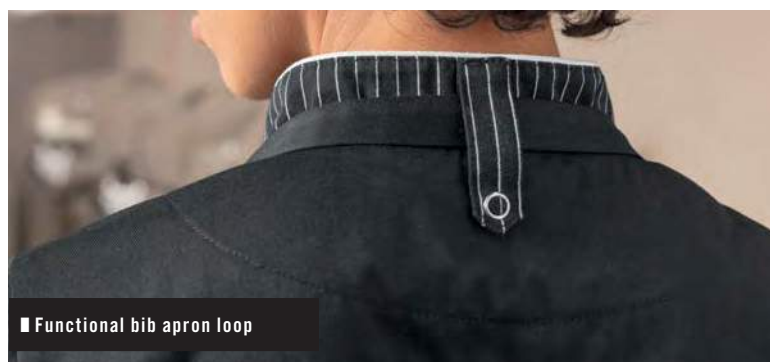
Chef jacket  
Pascal  
Piece only  
**39,99**

Men



Women

- Finely woven stripes
- Many practical pockets



■ Functional bib apron loop

### Chef jacket Pascal

High-quality chef jacket for women and men with woven stripes. Two large belly pockets, sleeve pocket and bib apron loop in the neck. French cuff with press buttons, fold in the back for more freedom of movement. Closable due to press buttons with covered press button tape. Women's model is slightly waisted. Men's model also has a recessed chest pocket.

Plain: 65% polyester, 35% cotton. 200 g/m<sup>2</sup>. 60 °C wash.

Striped: 100% cotton. 200 g/m<sup>2</sup>. 60 °C wash.

Back length women: 70 cm at size 36.

Back length men: 78 cm at size 50.

■ Color: white, black

■ Size women: 34, 36, 38, 40, 42, 44, 46, 48, 50, 52, 54, 56

■ Size men: 44, 46, 48, 50, 52, 54, 56, 58, 60, 62, 64, 66

Long sleeve women

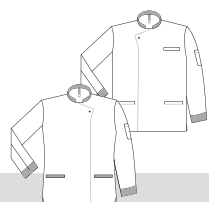
120149

Piece: 39,99

Long sleeve men

120152

Piece: 39,99



white

black



## CRAZY ABOUT STRIPES!

Stripes have been in fashion for years. Now they also appear in the kitchen. Chef jacket Pascal reinterprets the classic striped pattern: As fashionable detail on sleeves, pockets and on the sides.

Obviously the stripes bring best JOBELINE quality. Because they are finely woven, do not wash out and do not fade. Like this, you can enjoy your favorite pattern for a long time.

## DENIM STYLES



Chef jacket  
Scott  
Piece only  
**48<sup>99</sup>**

1

1

■ 2-part sleeve pocket

■ Practical press buttons



Chef jacket  
Oskar  
Piece only  
**59<sup>99</sup>**

2

2

■ Ventilation at the back

■ Lightweight denim

■ Soft grip

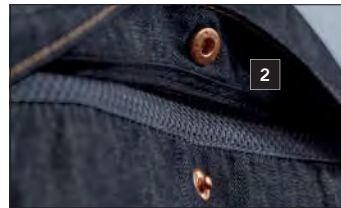
▶ Matching ball buttons p. 131



■ Bib apron loop in the neck



■ 2-part sleeve pocket on the left



■ Ventilation at the back due to mesh insert



■ Practical pockets

### 1 Chef jacket Scott

Stylish chef jacket with half or long sleeves. Closable with press buttons. 2-part sleeve pen pocket on the left and bib apron loop in the neck. Available in two materials: Real denim (color denim light) or chambray (grey).

**Denim light:** 100% cotton (denim). 255 g/m<sup>2</sup>. 40 °C wash.

**Grey:** 100% cotton (chambray). 170 g/m<sup>2</sup>. 40 °C wash.

**Back length women:** 68 cm at size 36.

**Back length men:** 76 cm at size 50.

■ **Color:** denim light, grey

■ **Size women:** 34, 36, 38, 40, 42, 44, 46, 48, 50

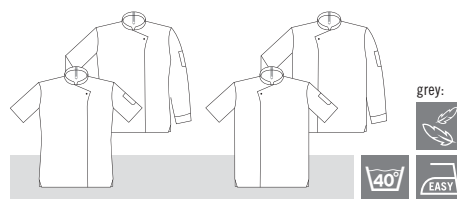
■ **Size men:** 44, 46, 48, 50, 52, 54, 56, 58, 60

Short sleeve women, denim light	117541	Piece: 48,99
Short sleeve women, grey	125020	Piece: 48,99
Long sleeve women, denim light	119267	Piece: 49,99
Long sleeve women, grey	125021	Piece: 49,99
Short sleeve men, denim light	117542	Piece: 48,99
Short sleeve men, grey	125018	Piece: 48,99
Long sleeve men, denim light	119418	Piece: 49,99
Long sleeve men, grey	125019	Piece: 49,99



denim light

grey



### 2 Chef jacket Alice and Oskar

Modern women's and men's chef jacket made of real denim, with contrasting seams in typical jeans look, including 2-part sleeve pen pocket on the left. Eyelets for ventilation under the arm. Mesh insert with press button on the back. The men's chef jacket additionally has a chest pocket with ball button.

**100% cotton (denim).** 212 g/m<sup>2</sup>. 40 °C wash.

**Back length women:** 73 cm at size 36.

**Back length men:** 80 cm at size 50.

■ **Color:** denim

■ **Size women:** 34, 36, 38, 40, 42, 44, 46, 48, 50

■ **Size men:** 44, 46, 48, 50, 52, 54, 56, 58, 60

Long sleeve women	115419	Piece: 59,99
Long sleeve men	115422	Piece: 59,99



# CHEF JACKETS

# TOP PRODUCT

**NEW**  
COLLECTION



■ Available with short and long sleeves

■ Long sleeve chef jacket with practical roll-up sleeves

■ Super lightweight fabric

■ Breathable due to opaque mesh inserts

▶ Chef trousers Severin p. 122, 126

▶ More information [www.em-group.com](http://www.em-group.com)



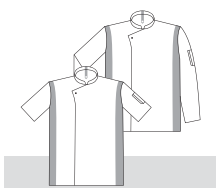
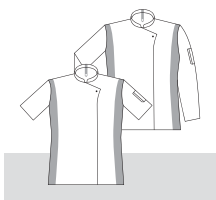
Carter is perfectly suitable for highest performance! Because the super lightweight chef jacket is breathable and temperature compensating. The covered press button tape and the roll-up sleeves at the long sleeve model ensure the special style.



Men

Women

Chef jacket  
Carter  
Piece from  
**38<sup>99</sup>**



**Chef jacket Carter**

Chef jacket for women and men made of extra lightweight and robust fabric. With stand-up collar, breathable mesh inserts on the sides, two-part upper arm pocket on the left and bib apron loop in the neck. Closable with press buttons in a covered press button tape. Available with short and long sleeves (roll-up sleeves). Women's model is cut slightly waisted.

65% cotton, 35% polyester. 160 g/m<sup>2</sup>. 60 °C wash.

Back length women: 68 cm at size 36.

Back length men: 76 cm at size 50.

■ Color: grey, black

■ Size women: 34, 36, 38, 40, 42, 44, 46, 48, 50, 52, 54, 56

■ Size men: 44, 46, 48, 50, 52, 54, 56, 58, 60, 62, 64, 66

Short sleeve women

125134

Piece: 38,99

Long sleeve women

124887

Piece: 39,99

Short sleeve men

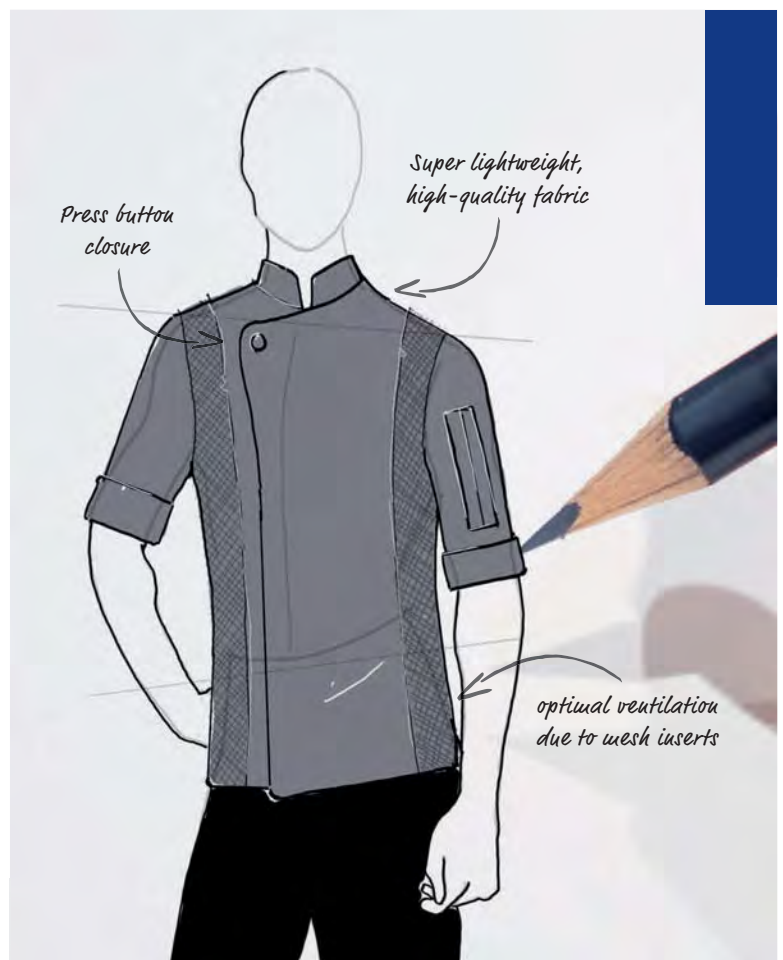
125135

Piece: 38,99

Long sleeve men

124895

Piece: 39,99



■ Functional bib apron loop in the neck



■ Breathable due to mesh inserts on the side, roll-up sleeves, upper arm pocket



**YOUR BENEFIT WITH CARTER**

- Lightweight, breathable and temperature compensating: Like this, you will feel good in the kitchen
- Fast-drying: Save time during cleaning

COOL KITCHEN STYLES

NEW COLLECTION

1



2

■ 2-part upper arm pocket

■ Easy care & boil-proof

■ Cool contrast seams

Chef jacket  
Leon  
Piece only  
68<sup>99</sup>

3

NEW COLOR



3



**Chef jacket Jannis**  
 Piece only  
**59,99**

**SPECIAL STRUCTURE**

Men

Women

- Mesh inserts on the side ensure optimal ventilation
- Small changes in color and washing are possible and ensure an unique look over time

**!** Dow XLA Stretch fiber for maximum freedom of movement and optimal wearing comfort.



■ Slits on the side for optimal ventilation



■ 2-part upper arm pocket

**+** **YOUR BENEFIT WITH MATTEO**

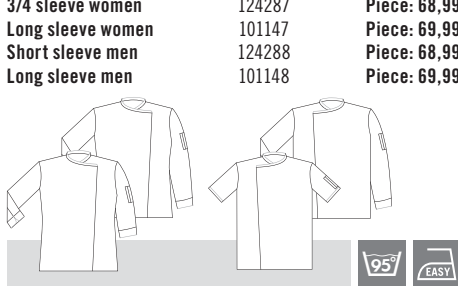
Colorfast and robust against strong heat due to High-Tec fiber: Suitable for industrial laundry!

- Easy care & boil-proof
- Hard-wearing fabric
- Suitable for industrial laundry
- 2-part upper arm pocket

**1 Chef jacket Jannis**  
 Exclusive, lightweight chef jacket for men in Fieldjacket look. With press button closure, two breast pockets, two-part sleeve pen pocket on the left and covered mesh inserts on the side at the back. Typical for the Fieldjacket look: The jacket becomes more and more characteristic with every washing and finally becomes as individual as its owner.  
**100% cotton. 210 g/m<sup>2</sup>. 40 °C wash.**  
**Back length: 74 cm at size 50.**  
 ■ Color: olive  
 ■ Size: 44, 46, 48, 50, 52, 54, 56, 58, 60  
 Long sleeve men 120784 **Piece: 59,99**

**2 Chef jacket Matteo**  
 Exclusive chef jacket in noble Panama weave with silver stitching. High wearing comfort due to elastic, form and heat-resistant Dow-XLA fiber. Covered press button tape and thermometer pocket.  
**62% polyester, 33% cotton, 5% EOL. 245 g/m<sup>2</sup>. 95 °C wash.**  
**Back length: 78 cm at size 50.**  
 ■ Color: anthracite, black  
 ■ Size: 44, 46, 48, 50, 52, 54, 56, 58, 60  
 Long sleeve men 101149 **Piece: 69,99**

**3 Chef jacket Luisa and Leon**  
 High-quality chef jacket made of structured fabric with grey piping on collar and cuffs. Covered press button tape and thermometer pocket. Men's model available with short and long sleeves. Women's model available with 3/4 and long sleeves. Suitable for industrial laundry.  
**65% polyester, 35% cotton. 215 g/m<sup>2</sup>. 95 °C wash.**  
**Back length women: 70 cm at size 36.**  
**Back length men: 78 cm at size 50.**  
 ■ Color: white/grey **NEW**, black/grey  
 ■ Size women: 34, 36, 38, 40, 42, 44, 46, 48, 50  
 ■ Size men: 44, 46, 48, 50, 52, 54, 56, 58, 60  
 3/4 sleeve women 124287 **Piece: 68,99**  
 Long sleeve women 101147 **Piece: 69,99**  
 Short sleeve men 124288 **Piece: 68,99**  
 Long sleeve men 101148 **Piece: 69,99**



## KITCHEN BASICS

Chef jacket  
Alla  
Piece only  
**19<sup>99</sup>**  
from 3 pieces\*

1

2

■ Easy care

■ Hard-wearing

■ With chest pocket

▶ Apron Botero p. 23, Ball buttons p. 131

# OUR BESTSELLERS IN PRICE AND PERFORMANCE

Women



1

white

white/bordeaux

white/blue

white/black



Men



2

white

white/bordeaux

white/blue

white/black

**Chef jacket Samuel**  
Piece from  
**17<sup>99</sup>**  
from 3 pieces\*

## 1 Chef jacket Aila

Easy care women's chef jacket in 6-buttonhole style with chest pocket and contrast piping.

**White:** 65% polyester, 35% cotton. 215 g/m<sup>2</sup>. 95 °C wash.

**Colored piping:** 65% polyester, 35% cotton. 215 g/m<sup>2</sup>. 60 °C wash.

**Back length:** 73 cm at size 36.

■ **Color:** white, white/bordeaux, white/blue, white/black

■ **Size:** 34, 36, 38, 40, 42, 44, 46, 48, 50, 52, 54, 56

Short sleeve women white 118757

Short sleeve women with piping 115436

Long sleeve women white 118758

Long sleeve women with piping 115435

Piece: 19,99

Piece: 20,99

Piece: 21,99

Piece: 22,99

## 2 Chef jacket Samuel

Easy care men's chef jacket in 6-buttonhole style with chest pocket, contrast piping and comfort slits in the back.

**White:** 100% cotton. 215 g/m<sup>2</sup>. 95 °C wash.

**Colored piping:** 100% cotton. 215 g/m<sup>2</sup>. 60 °C wash.

**Back length:** 73 cm at size 50.

■ **Color:** white, white/bordeaux, white/blue, white/black

■ **Size:** 44, 46, 48, 50, 52, 54, 56, 58, 60, 62, 64, 66

Short sleeve men white 118761

Short sleeve men with piping 115433

Long sleeve men white 118762

Long sleeve men with piping 115434

Piece: 19,99

Piece: 20,99

Piece: 21,99

Piece: 22,99

**NEW - Buy more. Save more.**

	from 3 pieces*
Short sleeve white	17,99
Short sleeve with piping	18,99
Long sleeve white	19,99
Long sleeve with piping	20,99

**Save up to 10%!**

\*if same color and size



white:



with piping:



**NEW - Buy more. Save more.**

	from 3 pieces*
Short sleeve white	17,99
Short sleeve with piping	18,99
Long sleeve white	19,99
Long sleeve with piping	20,99

**Save up to 10%!**

\*if same color and size



white:



with piping:



JOBELINE

work · fashion · fun

Chef jacket  
Carter  
Piece only

39<sup>99</sup>

▶◆ 101

**VEGA**

JOBELINE

Parceiro exclusivo



[www.DAUTI.pt](http://www.DAUTI.pt)

Hotelwäsche  
**Erwin Müller**

**pulsiva**

Rua Nova, 420 | 4570-074 Balasar | Portugal Tel. +351 252 954 026 Fax. +351 252 955 335 | [comercial@dauti.pt](mailto:comercial@dauti.pt)