



J O B E L I N E

work · fashion · fun

Annual Catalog
2019

Workwear
for Restaurant,
Hotel & Catering

Removable ribbons for easy washing
and a cool look:
Bib apron Ben p. 29

www.em-group.com

EN0319JL 10099887

ALLROUNDER
WITH BALL BUTTON

QUANTITY
DISCOUNT



NEW
COLORS

1

2

Chef jacket
Paolo
Piece only

1799

from 3 pieces*

■ Delivery including button tape

■ Easy to care and to iron

■ Color matching ball buttons
see p. 131

OUR BESTSELLERS IN PRICE AND PERFORMANCE



white mango red bordeaux blackberry pink (only women) apple green moss green



olive smoky blue navy taupe coca light grey grey black

1 Chef jacket Pauline

Women's chef jacket, short and long sleeve, in easy care blended quality, 5-buttonhole shape, including button tape at JOBELINE super price.

65% polyester, 35% cotton. 200 g/m². 60 °C wash.

Back length: 73 cm at size 36.

■ Color short sleeve: white, mango, blackberry, olive **NEW**, smoky blue, light grey **NEW**, black

■ Color long sleeve: white, mango, red, bordeaux, blackberry, pink, apple green, moss green, olive **NEW**, smoky blue, navy, taupe, coca, light grey **NEW**, grey, black

■ Size: 34, 36, 38, 40, 42, 44, 46, 48, 50, 52, 54, 56

Short sleeve women 102813

Long sleeve women 100866

Piece: 18,99

Piece: 19,99

2 Chef jacket Paolo

Men's chef jacket, short and long sleeve, in easy care blended quality, 5-buttonhole shape, including button tape at JOBELINE super price.

65% polyester, 35% cotton. 200 g/m². 60 °C wash.

Back length: 79 cm at size 50.

■ Color short sleeve: white, mango, blackberry, olive **NEW**, smoky blue, light grey **NEW**, black

■ Color long sleeve: white, mango, red, bordeaux, blackberry, apple green, moss green, olive **NEW**, smoky blue, navy, taupe, coca, light grey **NEW**, grey, black

■ Size: 44, 46, 48, 50, 52, 54, 56, 58, 60, 62, 64, 66

Short sleeve men 102379

Long sleeve men 100799

Piece: 18,99

Piece: 19,99

NEW - Buy more. Save more.

	from 3 pieces*
Short sleeve	16,99
Long sleeve	17,99
Save 10%!	

*if same color and size

Colors short sleeve:



white mango blackberry olive smoky blue light grey black

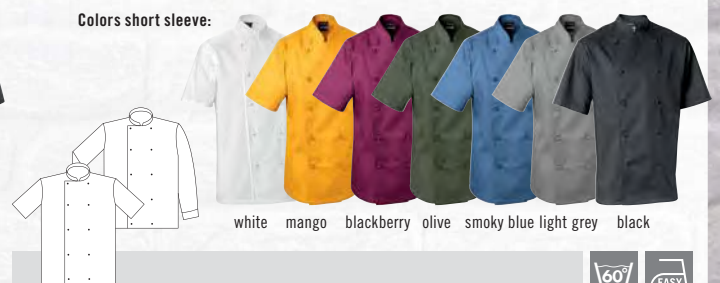


NEW - Buy more. Save more.

	from 3 pieces*
Short sleeve	16,99
Long sleeve	17,99
Save 10%!	

*if same color and size

Colors short sleeve:



white mango blackberry olive smoky blue light grey black



TEAMWORK



Chef jacket
Milan
Piece only
23⁹⁹
from 3 pieces*

**LIGHT
WEIGHT**
extra
thin material

- Incl. ball buttons and buttons tape
- Practical 2-part upper arm pocket



Chef jacket
Allin
Piece only
22⁹⁹
from 3 pieces*

OUR BESTSELLERS IN PRICE AND PERFORMANCE



1

white

blackberry

taupe



2

white

blackberry

taupe



coca

grey

black



■ With press button closure

■ Easy to care and to iron



black

1 Chef jacket Milan

Chef jacket for women and men in several attractive colors. The lightweight polyester-cotton blended fabric promises comfort even in hot temperatures. With 2-part upper arm pocket. Including 5-buttonhole shape and ball buttons in color of the chef jacket. Easy to care and easy to iron. Choose between several sleeve lengths: Long or short sleeve at men's model, long, 3/4 or short sleeve at slightly waisted women's model.

65 % polyester, 35 % cotton. 160 g/m². 60 °C wash.

Back length women: 73 cm at size 36.

Back length men: 78 cm at size 50.

■ Color: white, blackberry, taupe, coca, grey, black

■ Size women: 34, 36, 38, 40, 42, 44, 46, 48, 50, 52, 54, 56

■ Size men: 44, 46, 48, 50, 52, 54, 56, 58, 60, 62, 64, 66

Short sleeve women	120166	Piece: 24,99
3/4 sleeve women	120165	Piece: 25,99
Long sleeve women	120167	Piece: 26,99
Short sleeve men	120171	Piece: 24,99
Long sleeve men	120172	Piece: 26,99

NEW - Buy more. Save more.

	from 3 pieces*
Short sleeve women	23,99
3/4 sleeve women	24,99
Long sleeve women	25,99
Short sleeve men	23,99
Long sleeve men	25,99

Save up to 4 %!

*if same color and size



short sleeve

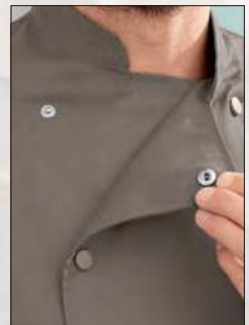
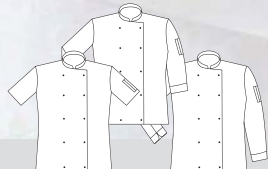
3/4 sleeve

long sleeve



short sleeve

long sleeve



■ Practical press button closure

2 Chef jacket Ailin & Emil

Women's and men's chef jacket in easy care blend quality, that quickly transports moisture to the outside. With practical press button closure and ventilation eyelets under the arm. Available with short and long sleeves.

65 % polyester, 35 % cotton. 200 g/m². 60 °C wash.

Back length women: 73 cm at size 36.

Back length men: 79 cm at size 50.

■ Color: white, blackberry, taupe, black

■ Size women: 34, 36, 38, 40, 42, 44, 46, 48, 50, 52, 54, 56

■ Size men: 44, 46, 48, 50, 52, 54, 56, 58, 60, 62, 64, 66

Short sleeve women	124283	Piece: 23,99
Long sleeve women	115418	Piece: 24,99
Short sleeve men	124291	Piece: 23,99
Long sleeve men	115420	Piece: 24,99

NEW - Buy more. Save more.

	from 3 pieces*
Short sleeve	22,99
Long sleeve	23,99

Save 4 %!

*if same color and size

KITCHEN PERFORMANCE



Chef jacket
Vita
Piece only
44⁹⁹



- Delivery includes ball buttons & button tape
- Lightweight fabric
- High wearing comfort

1 Chef jacket Vita

Asymmetrical waisted women's chef jacket in full-ply cotton with contrast piping on collar, cuff, pocket and front edge. Incl. button tape and matching ball buttons.

100% cotton. 175 g/m². 60 °C wash.

Back length: 76 cm at size 36.

■ Color: white/black, bordeaux/white, black/white, black/blackberry

■ Size: 34, 36, 38, 40, 42, 44, 46, 48, 50

Long sleeve women

100943

Piece: 44,99



Chef jacket
Jogi
Piece only
44⁹⁹

- Delivery includes ball buttons & button tape
- High wearing comfort

2 Chef jacket Jogi

Men's chef jacket made of high-quality, hard-wearing cotton with color-coordinated contrast piping, chest pocket and double french cuff. Incl. ball buttons. 5-buttonhole shape.

100% cotton. 225 g/m². 60 °C wash.

Back length: 73 cm at size 50.

■ Color: bordeaux/black, black/bordeaux

■ Size: 44, 46, 48, 50, 52, 54, 56, 58, 60

Long sleeve men

100440

Piece: 44,99



white/black

bordeaux/white

black/white

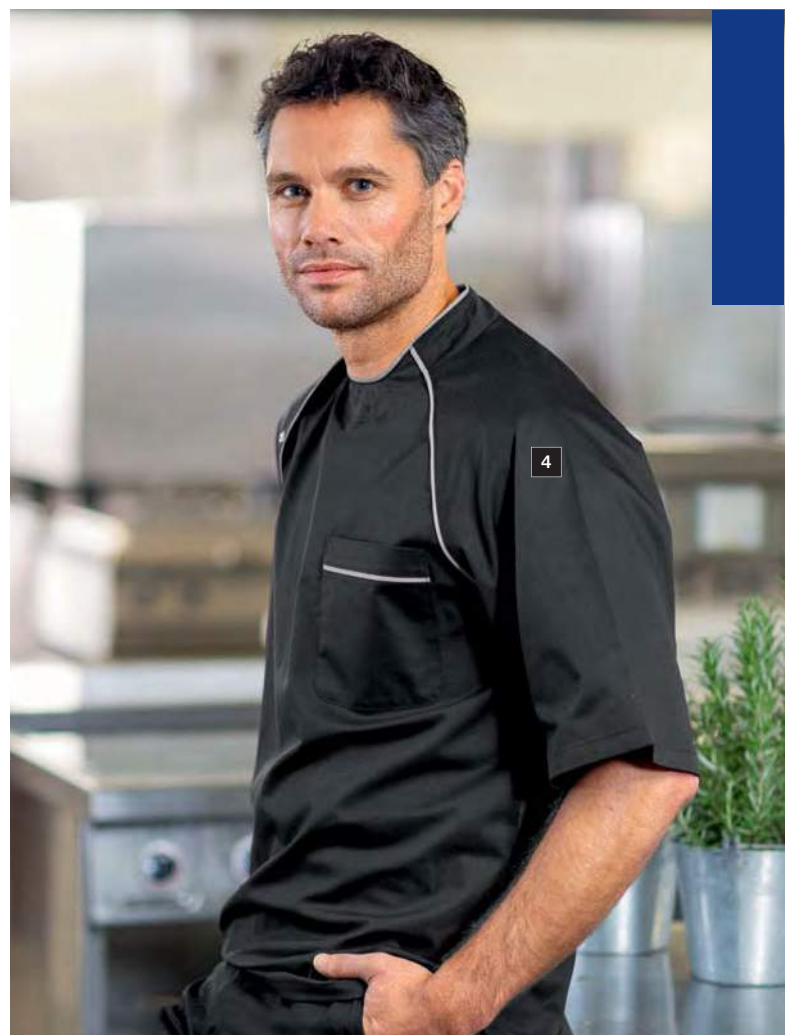
black/blackberry



bordeaux/black

black/bordeaux





PERMANENTLY
REDUCED
IN PRICE!



With practical zipper in contrasting color



Chef shirt
Pirlo
Piece only
24⁹⁹

Practical chest pocket

Easy-iron

3 Chef jacket Lorenzo

Fashionable men's chef jacket in long sleeve with contrasting zipper in the front centre, chest pocket with contrast zipper and cuff in contrasting color.

65% polyester, 35% cotton. 200 g/m². 60 °C wash.

Back length: 77 cm at size 50.

Color: white/black, bordeaux/black, taupe/black **NEW**, black/white, black/red

Size: 44, 46, 48, 50, 52, 54, 56, 58, 60

Long sleeve men

101663

Piece: 29,99

4 Chef shirt Pirlo

Chef shirt for men in short sleeve with raglan sleeves, press button closure on the side on collar, contrast piping, 1 chest pocket, box pleat in the back and comfort slits on the side.

65% polyester, 35% cotton. 215 g/m². 60 °C wash.

Back length: 73 cm at size 50.

Color: white/black, black/mango, black/red, black/grey

Size: 44, 46, 48, 50, 52, 54, 56, 58, 60, 62, 64, 66

Short sleeve men

100679

Piece: 24,99



white/black

bordeaux/black

taupe/black

black/white

black/red



white/black

black/mango

black/red

black/grey



KEEP COOL



- Breathable
- Lightweight fabric
- Clean front side due to covered press buttons

INNOVATION BY JOBELINE

We know: Only the ones who feel good, have enough power for working in the kitchen. That's why we permanently search for innovations that make your life easier. The result: Our functional material WERIN® TEC. It is very comfortable, so that nothing pinches or tweaks. Furthermore, the active moisture management guarantees that you will stay cool even if it becomes hot in the kitchen. Like this, you will be completely concentrated at work!



WWW.WERIN-TEC.COM

Fast-drying and thus quickly ready for reuse

Nothing pinches or tweaks thanks to share of spandex

Active moisture management: Less sweating, less washing!

Cooling effect due to derivation of the impounded heat on the skin

Your benefits at one glance:

- Active moisture management
- Cooling effect
- Dimensionally stable
- Fast-drying surface
- Breathable
- Optimal freedom of movement due to share of spandex

Even thinner and more lightweight

WERIN® TEC is now also available as Light version. WERIN® TEC Light is just as good as its big brother: This fabric is breathable, dries fast and cools, as it derivates the impounded heat on the skin. It's only even more lightweight – and thus ideal for chef clothing.

WERIN® TEC & WERIN® TEC LIGHT can be found on these pages in the catalog :

- ▶ Service jacket May p. 79
- ▶ Chef shirt Joker p. 113
- ▶ Chef trousers Severin p. 122, 126
- ▶ Chef jacket Vigo p. 113
- ▶ Trousers Griffin p. 93
- ▶ Chef trousers Quentin p. 122, 126
- ▶ Chef jacket Advanced p. 115



Men

Women



WWW.WERIN-TEC.COM



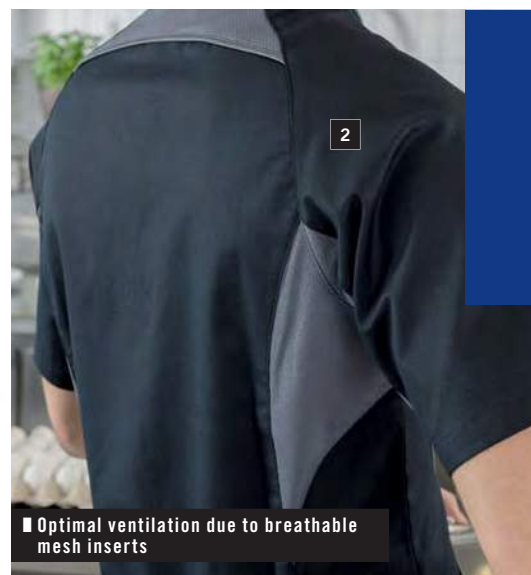
Men

Women



WWW.WERIN-TEC.COM

Chef T-shirt
Joker
Piece only
34⁹⁹



Optimal ventilation due to breathable mesh inserts



Fold underlaid with mesh for perfect ventilation and freedom of movement

1 Chef jacket Vigo

Chef jacket for women and men in white or black. The lightweight, comfortable material with share of spandex guarantees maximum comfort in the hot kitchen. With two-part upper arm pocket, bib apron loop in neck and preformed elbow seam. Men's jacket has an additional chest pocket, women's model is slightly waisted. Closable with press buttons, easy care and easy-iron.

58% cotton, 42% polyester. 180 g/m². 60 °C wash.

Back length women: 75 cm at size 36.

Back length men: 80 cm at size 50.

Color: white, black

Size women: 34, 36, 38, 40, 42, 44, 46, 48, 50, 52, 54, 56

Size men: 44, 46, 48, 50, 52, 54, 56, 58, 60, 62, 64, 66

Long sleeve women 120168 Piece: 49,99

Long sleeve men 120173 Piece: 49,99

2 Chef T-shirt Joker Men

Modern men's chef T-shirt made of breathable, cooling and also moisture-regulating polyester-stretch. Contrast piping on collar and raglan sleeves as well as on side seams in the front. Mesh inserts in forearm area and in upper back area. Integrated zipper at neckline, underlaid with contrasting mesh.

76% cotton, 24% polyester-stretch. 218 g/m². 60 °C wash.

Back length: 77 cm at size 50.

Color: white/grey, white/red/green, graphite/white, black/grey, black/red

Size: 44, 46, 48, 50, 52, 54, 56, 58, 60, 62, 64, 66

Short sleeve men 101861 Piece: 34,99

3 Chef T-shirt Joker Women

Modern women's chef T-shirt made of breathable, cooling and moisture regulating material. Mesh inserts in forearm area, in movement slit in the back and on the side of the seam. Contrast piping on collar, sleeves and mesh inserts on the side. Zipper under the left arm for easier dressing.

76% cotton, 24% polyester-stretch. 218 g/m². 60 °C wash.

Back length: 65 cm at size 36.

Color: white/graphite, graphite/white

Size: 34, 36, 38, 40, 42, 44, 46, 48, 50

Short sleeve women 115442 Piece: 34,99



white

black



white/grey

white/red/green

graphite/white

black/grey

black/red



white/graphite

graphite/white



TOP PRODUCT

Chef jacket
Advanced
Piece only
69⁹⁹

■ With share of spandex for optimal freedom of movement

■ Elegant look thanks to classic shirt collar and covered press button tape

■ Mesh inserts on the sides and sleeves for perfect ventilation and climate regulation

▶ More information www.em-group.com

This completely white chef jacket Advanced gets its elegant look due to the covered press button tape. Practical details for a optimal breathability: The mesh inserts on the side and sleeves.



Men

Women



WWW.WERIN-TEC.COM

► More info p. 112

Chef jacket Advanced

Chef jacket for women and men made of particularly lightweight, breathable and moisture compensating function material WERIN® TEC Light. With mesh inserts on the sides and on lower part of the sleeve for optimal ventilation. Long sleeves with Roll-up function. With chest pocket and 2-part upper arm pocket on the left sleeve. Closable with press buttons with covered press button tape. Women's model is cut slightly waisted.

58% cotton 42% polyester. 180 g/m². 60 °C wash.

Back length women: 75 cm at size 36.

Back length men: 81 cm at size 50.

■ Color: white

■ Size women: 34, 36, 38, 40, 42, 44, 46, 48, 50, 52, 54, 56

■ Size men: 44, 46, 48, 50, 52, 54, 56, 58, 60, 62, 64, 66

Long sleeve women

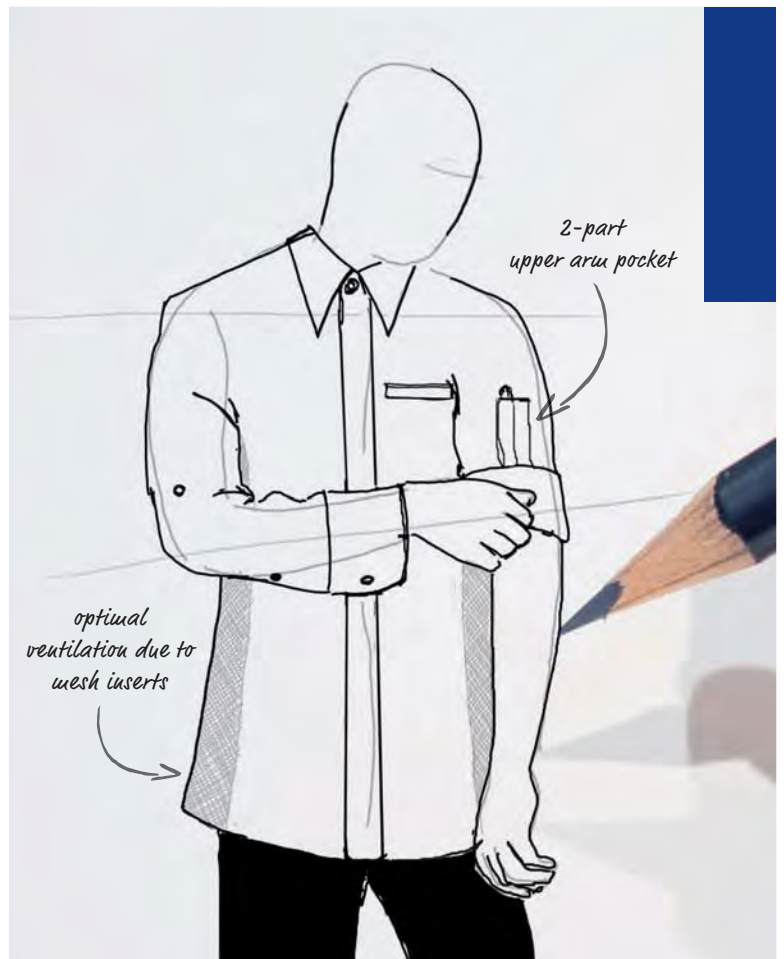
124910

Piece: 69,99

Long sleeve men

124914

Piece: 69,99



■ Collar with covered Button-down function for fixing



■ Long sleeve with practical Roll-up function



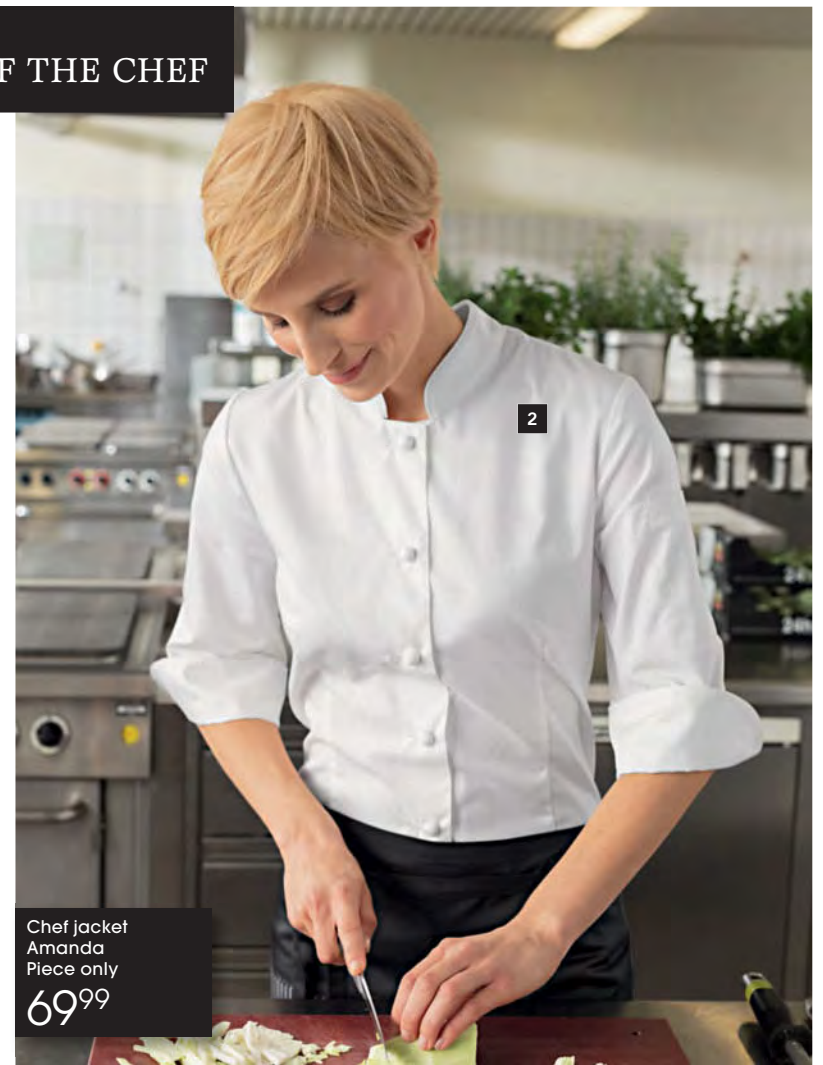
YOUR BENEFIT WITH ADVANCED

- Extra lightweight and breathable function material WERIN® TEC Light for optimal wearing comfort
- Less sweating due to temperature compensating effect: You will feel very good

MATTER OF THE CHEF



Chef jacket
Adam
Piece only
89⁹⁹



Chef jacket
Amanda
Piece only
69⁹⁹

- Extra lightweight fabric
- Fine yarns for a noble look
- Hard-wearing & easy care
- With upper arm pocket & fine terry band in collar



■ Terry band in collar for optimal absorption of sweat



▶ Apron Sonora p. 43



1 Chef jacket Adam

High-quality classic men's chef jacket in 6-buttonhole shape made of finest long staple cotton. With terry band in collar, two-part upper arm pocket and back slit for optimal freedom of movement. Fabric ball buttons on button tape in the center are firmly sewn and hand-rolled.

Back length: 80 cm at size 50.

■ Color: white

■ Size: 44, 46, 48, 50, 52, 54, 56, 58, 60, 62, 64, 66

Long sleeve men

117544

Piece: 89,99



2 Chef jacket Amanda

High-quality, waisted women's chef jacket made of fine long staple cotton. With terry band in collar, two-part upper arm pocket, 3/4 sleeves and back slit for optimal freedom of movement. Fabric ball buttons on button tape in the center are firmly sewn and hand-rolled.

100% cotton. 175 g/m². 95 °C wash.

Back length: 75 cm at size 36.

■ Color: white

■ Size: 34, 36, 38, 40, 42, 44, 46, 48, 50

3/4 sleeve women

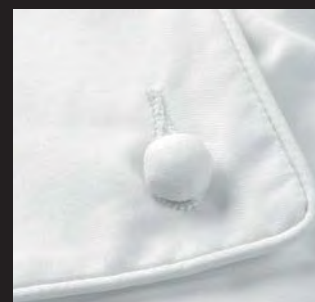
120163

Piece: 69,99



CHEF JACKETS FOR HER AND HIM

The chef jackets Amanda and Adam pamper the skin with their comfortable, fine, thin and yet hard-wearing ma-



terial and are additionally equipped with temperature compensating properties. Over the years, thanks to the anti-pill effect, Amanda & Adam are getting softer and softer. The high-quality fabric of Amanda and

Adam is responsible for this: The chef jackets are made of a 120/3-fold yarn, which is otherwise only found in high-quality men's shirts in the luxury segment. A wonderful luxury to indulge in!

KITCHEN STARS

LIGHT WEIGHT
extra thin material

Chef jacket Professional
Piece only
69⁹⁹

■ Particularly lightweight fabric (details see p. 117)

■ Fine & soft grip

■ Hard-wearing & easy care

■ Modern look due to covered press button tape in the center



Chef jacket Kent
Piece only
69⁹⁹

■ Extra lightweight & soft fabric

■ 2-part upper arm pocket

■ Hard-wearing & easy care

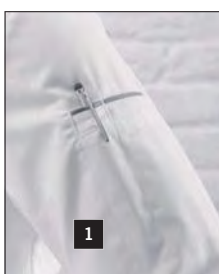
■ Particularly soft grip

LIGHT WEIGHT
extra thin material

Chef jacket
Delight
Piece only
59⁹⁹



1
■ Bib apron loop in neck



1
■ 2-part upper arm pocket



1
■ Terry band in collar



► More information p. 135

- Perfect moisture absorption
- Cooling on the skin
- Smooth and soft grip

1 Chef jacket Professional

High-quality chef jacket for women and men made of finest, light-weight, long staple cotton with grey piping on collar and sleeve seam. Covered button tape with press buttons in the center, two-part pen pocket on upper arm, bib apron loop in the neck, press button closure and cuffs with press button. Women's model is slightly waisted.

100% cotton. 175 g/m². 60 °C wash.

Back length women: 73 cm at size 36.

Back length men: 79 cm at size 50.

■ Color: white/grey

■ Size women: 34, 36, 38, 40, 42, 44, 46, 48, 50, 52, 54, 56

■ Size men: 44, 46, 48, 50, 52, 54, 56, 58, 60, 62, 64, 66

Long sleeve women	120307	Piece: 69,99
Long sleeve men	120309	Piece: 69,99



2 Chef jacket Kent

Chef jacket for women and men made of fine, high-quality long staple cotton with fashionable piping on collar and sleeves. With two-part upper arm pocket and terry band in collar. Men's jacket has an additional chest pocket, women's model is slightly waisted.

100% cotton. 175 g/m². 60 °C wash.

Back length women: 75 cm at size 36.

Back length men: 79 cm at size 50.

■ Color: white/graphite

■ Size women: 34, 36, 38, 40, 42, 44, 46, 48, 50

■ Size men: 44, 46, 48, 50, 52, 54, 56, 58, 60

Long sleeve women	120164	Piece: 69,99
Long sleeve men	120170	Piece: 69,99



3 Chef jacket Delight

Chef jacket for women and men made of high-quality Tencel® material with share of stretch and press button closure. The jacket has a cooling effect on the skin and a smooth and soft grip. 2-part sleeve pen pocket on upper arm.

55% lyocell (Tencel®), 45% polyester-stretch. 220 g/m².

60 °C wash.

Back length women: 74 cm at size 36.

Back length men: 80 cm at size 50.

■ Color: white/taupe

■ Size women: 34, 36, 38, 40, 42, 44, 46, 48, 50, 52, 54, 56

■ Size men: 44, 46, 48, 50, 52, 54, 56, 58, 60, 62 64 66

Long sleeve women	117545	Piece: 59,99
Long sleeve men	117546	Piece: 59,99



EXCELLENT

Chef jacket
Premium Chef
Piece only

79⁹⁹



■ Hand-rolled fabric ball buttons
and practical chest pocket

1





- Lightweight
- Boil-proof and chlorine resistant
- Practical chest pocket



LIGHT WEIGHT
extra thin material



Chef jacket Premium Chef Piece from **68⁹⁹**

1 Chef jacket Premium Chef fabric buttons

Classic chef jacket in 6-buttonhole shape made of mercerised, lightweight cotton twill fabric, with hand-rolled fabric ball buttons. With chest pocket, french cuff and slits in the back. 100% cotton. 175 g/m². 95 °C wash. Back length: 79 cm at size 50.

■ Color: white
■ Size: 44, 46, 48, 50, 52, 54, 56, 58, 60, 62, 64, 66
Long sleeve men 115432 Piece: 79,99

2 Chef jacket Premium Chef men

Classic chef jacket in 6-buttonhole shape made of mercerised, lightweight cotton twill fabric for best wearing comfort. With chest pocket, french cuff and slits in the back. Jacket white: 100% cotton. 175 g/m². 95 °C wash. Jacket with piping: 100% cotton. 175 g/m². 60 °C wash. Back length: 79 cm at size 50.

■ Color: white, white/black
■ Size: 44, 46, 48, 50, 52, 54, 56, 58, 60, 62, 64, 66
Short sleeve men white 118759 Piece: 68,99
Short sleeve men with piping 115426 Piece: 68,99
Long sleeve men white 118760 Piece: 69,99
Long sleeve men with piping 115425 Piece: 69,99

3 Chef jacket Premium Chef women

Classic chef jacket in 6-buttonhole shape made of mercerised, lightweight cotton twill fabric for best wearing comfort. With chest pocket, french cuff and slits in the back. Jacket white: 100% cotton. 175 g/m². 95 °C wash. Jacket with piping: 100% cotton. 175 g/m². 60 °C wash. Back length: 74 cm at size 36.

■ Color: white, white/black
■ Size: 34, 36, 38, 40, 42, 44, 46, 48, 50, 52, 54, 56
Short sleeve women white 115428 Piece: 68,99
Short sleeve women with piping 118755 Piece: 68,99
Long sleeve women white 115427 Piece: 69,99
Long sleeve women with piping 118756 Piece: 69,99



■ Perfect for your embroidery



► Customizing p. 142



■ French cuff



Chef trousers
Severin
Piece only
44⁹⁹



Chef trousers
Luke
Piece only
49⁹⁹

MEN'S CHEF TROUSERS



WWW.WERIN-TEC.COM

► More info p. 112



WWW.WERIN-TEC.COM

► More info p. 112

PERMANENTLY
REDUCED
IN PRICE!

1 Chef trousers Severin

Black chef trousers for men in cargo style with straight cut leg. The lightweight, comfortable cotton-polyester blended fabric guarantees comfortable wearing even in hot temperatures. On the right thigh is a thermometer pocket and a flap for pens & Co. With two additional flaps for tea towel or kitchen utensils, belt loops and a comfortable elastic waistband in the back. 5-pocket style (two insertion pockets on the side, another small pocket on the right, two pockets on the back).

58% cotton, 42% polyester. 180 g/m². 60 °C wash.
Inseam length: 81 cm at size 50.

■ Color: black

■ Size: 44, 46, 48, 50, 52, 54, 56, 58, 60, 62, 64, 66

120169

Piece: 44,99



2 Chef trousers Quentin

Modern cut chef trousers in houndstooth with knee darts and belt loops, 2 insertion pockets on the side and 2 patch hip pockets.

52% cotton, 48% polyester. 280 g/m². 60 °C wash.
Inseam length: 82 cm at size 50.

■ Color: houndstooth

■ Size: 44, 46, 48, 50, 52, 54, 56, 58, 60

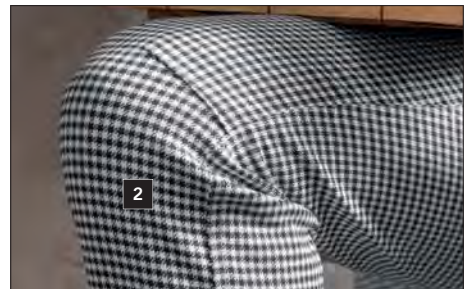
115410

Piece: 39,99



YOUR BENEFIT
WITH SEVERIN

Less sweating in the kitchen
due to breathable and super
lightweight function material
WERIN® TEC Light.



■ Trendy knee darts



Chef trousers
Avito
Piece only
39⁹⁹

3

- Large thermometer pocket
- Comfortable elastic waistband in the back



Chef trousers
Luke
Piece only
49⁹⁹

4

- Covered ventilation slits
- Adjustable waistband due to elastic cord



Chef trousers
Lars
Piece only
44⁹⁹

5



GLENCHECK
PATTERN

- Super lightweight fabric
- Easy to care and to iron

3 Chef trousers Avito

Classic chef trousers for men with comfortable elastic waistband. Patch thermometer pocket on right thigh, 2 insertion pockets on the side, hip pocket.

65% polyester, 35% cotton. 240 g/m². 60 °C wash.

Inseam length: 83 cm at size 50.

■ Color: black

■ Size: 44, 46, 48, 50, 52, 54, 56, 58, 60

117519

Piece: 39,99

4 Chef trousers Luke

Functional men's chef trousers made of high-quality and easy care fabric. With covered mesh inserts on the legs and above the buttocks for optimal ventilation. Insertion pockets on the side and belt loops. Adjustable waistband due to integrated elastic cord with stopper.

65% polyester, 35% cotton. 245 g/m². 60 °C wash.

Inseam length: 83 cm at size 50.

■ Color: graphite, black

■ Size: 44, 46, 48, 50, 52, 54, 56, 58, 60

100453

Piece: 49,99

5 Chef trousers Lars

Men's chef trousers in straight cut, trendy Glencheck design with two insertion pockets on the side and a hip pocket.

65% polyester, 35% cotton. 180 g/m². 60 °C wash.

Inseam length: 82 cm at size 50.

■ Color: anthracite

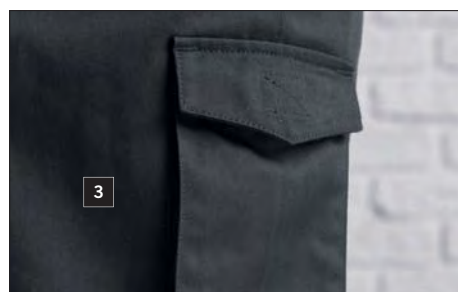
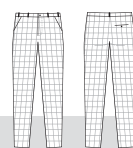
■ Size: 44, 46, 48, 50, 52, 54, 56, 58, 60

101037

Piece: 44,99



graphite black



3

■ Thermometer pocket

CHEF TROUSERS

MEN'S CHEF TROUSERS



Chef trousers
Holger
Piece only
24⁹⁹

1



Chef trousers
Francis
Piece only
28⁹⁹

2



Chef trousers
Colin
Piece only
28⁹⁹

3

■ Elastic waistband inserts on the side for optimal freedom of movement

1 Chef trousers Holger

Men's chef trousers in houndstooth, with 2 pockets on the side, hip pocket, zipper and elastic waistband on the side.

100% cotton. 295 g/m². 95 °C wash.

Inseam length: 84 cm at size 50.

■ Color: houndstooth

■ Size: 44, 46, 48, 50, 52, 54, 56, 58, 60

100525

Piece: 24,99

2 Chef trousers Francis

Men's chef trousers made of easy care, hard-wearing blended fabric with straight cut, 2 patch insertion pockets, hip pocket and pocket on the side with press button closure.

65% polyester, 35% cotton. 245 g/m². 60 °C wash.

Inseam length: 80 cm at size 50.

■ Color: black

■ Size: 44, 46, 48, 50, 52, 54, 56, 58, 60, 62, 64, 66

101211

Piece: 28,99

3 Chef trousers Colin

Men's chef trousers made of easy care, hard-wearing blended fabric with contrast piping, 2 patch insertion pockets, hip pocket and pocket on the side with press button closure.

65% polyester, 35% cotton. 245 g/m². 60 °C wash.

Inseam length: 80 cm at size 50.

■ Color: black/white, black/mango, black/red, black/blackberry, black/grey

■ Size: 44, 46, 48, 50, 52, 54, 56, 58, 60

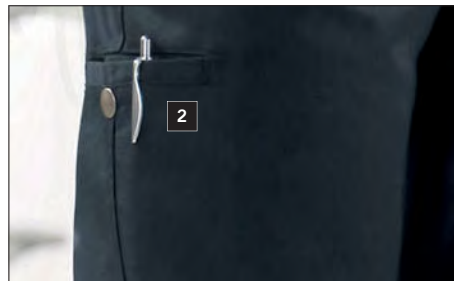
100864

Piece: 28,99



1

■ Comfortable waistband and practical hip pocket



2

■ Practical leg pocket with press button



black/white black/mango black/red black/blackberry black/grey





Chef trousers Nick
 Piece only
24⁹⁹

4



Chef trousers Fabio
 Piece only
24⁹⁹

5



Chef trousers Nathan
 Piece only
17⁹⁹
 from 3 pieces*

6



Chef trousers Liam
 Piece only
22⁹⁹

7

■ Practical elastic waistband

■ Elastic band inserts on the side



■ Practical elastic waistband

■ Practical elastic waistband

4 Chef trousers Nick

Striped men's chef trousers with elastic waistband and cord, 2 insertion pockets on the side and hip pocket.

100% cotton. 245 g/m². 60 °C wash.

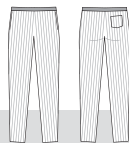
Inseam length: 84 cm at size 50.

■ Color: black/white

■ Size: 44, 46, 48, 50, 52, 54, 56, 58, 60, 62, 64, 66

100710

Piece: 24,99



6 Chef trousers Nathan

Chef trousers with elastic waistband in houndstooth with integrated cord, 2 insertion pockets on the side and 2 patch hip pockets.

100% cotton. 240 g/m². 60 °C wash.

Inseam length: 84 cm at size 50.

■ Color: houndstooth

■ Size: 44, 46, 48, 50, 52, 54, 56, 58, 60, 62, 64, 66

115409

Piece: 19,99

NEW - Buy more. Save more.

from 3 pieces*

17,99

Save 10%!

*if same color and size



7 Chef trousers Liam

Chef trousers with elastic waistband in plain with integrated cord, 2 insertion pockets on the side and 2 patch hip pockets.

65% polyester, 35% cotton. 240 g/m². 60 °C wash.

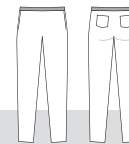
Inseam length: 84 cm at size 50.

■ Color: white, black

■ Size: 44, 46, 48, 50, 52, 54, 56, 58, 60, 62, 64, 66

100944

Piece: 22,99



white black



5 Chef trousers Fabio

Classic striped men's chef trousers with 2 side pockets and 2 hip pockets, elastic waistband inserts on the side and zipper.

100% cotton. 245 g/m². 60 °C wash.

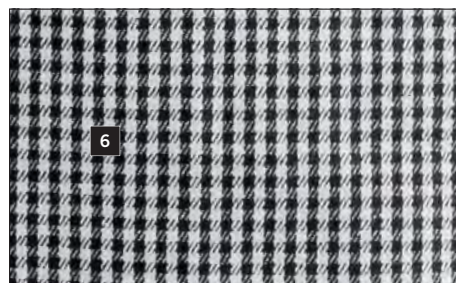
Inseam length: 82 cm at size 50.

■ Color: black/white

■ Size: 44, 46, 48, 50, 52, 54, 56, 58, 60, 62, 64, 66

100636

Piece: 24,99



6

■ Classic houndstooth pattern



7

■ Insertion pockets on the side and hip pockets

WOMEN'S CHEF TROUSERS



Chef trousers
Severin
Piece only
44⁹⁹



Chef trousers
Cosma
Piece only
49⁹⁹



WWW.WERIN-TEC.COM

► More info p. 112



■ Thermometer pocket incl. pen loop

■ Breathable

■ Optimal freedom of movement due to share of stretch

■ High wearing comfort due to share of spandex

■ Easy care

■ Narrow, modern cut

1 Chef trousers Severin

Black chef trousers for women in cargo style with straight cut leg. The lightweight, comfortable cotton-polyester blended fabric guarantees comfortable wearing even in hot temperatures. On the right thigh is a thermometer pocket and a flap for pens & Co. With two additional flaps for tea towel or kitchen utensils, belt loops and a comfortable elastic waistband in the back. 5-pocket style (two pockets on the side, another small pocket on the right, two pockets on the back).

58% cotton, 42% polyester. 180 g/m². 60 °C wash.

Inseam length: 78 cm at size 36.

■ Color: black

■ Size: 34, 36, 38, 40, 42, 44, 46, 48, 50, 52, 54, 56

120162

Piece: 44,99

2 Chef trousers Quentin

Modern cut chef trousers in houndstooth with shaping knee darts and belt loops, 2 insertion pockets on the side and 2 patch hip pockets.

52% cotton, 48% polyester. 280 g/m². 60 °C wash.

Inseam length: 78 cm at size 36.

■ Color: houndstooth

■ Size: 34, 36, 38, 40, 42, 44, 46, 48, 50

117521

Piece: 39,99



WWW.WERIN-TEC.COM

► More info p. 112



■ Thermometer pocket incl. pen loop





3

Chef trousers Loreen
Piece only
26⁹⁹



4

Chef trousers Avito
Piece only
39⁹⁹



5

Chef trousers Nathan
Piece only
17⁹⁹
from 3 pieces*



6



■ Fast-drying

■ Insertion pockets on the side

■ High wearing comfort due to elastic band

■ Insertion pockets on the side

■ Patch thermometer pocket on the leg

■ Hard-wearing & easy-iron

■ Insertion pockets on the side

■ Easy care

3 Chef trousers Cosma

Functional women's chef trousers made of high-quality and easy care fabric. With covered mesh inserts on the legs and above the buttocks, for optimal ventilation. Insertion pockets on the side and belt loops. Adjustable waistband due to integrated elastic cord with stopper.

65% polyester, 35% cotton. 245 g/m². 60 °C wash.

Inseam length: 80 cm at size 36.

■ Color: graphite, black

■ Size: 34, 36, 38, 40, 42, 44, 46, 48, 50, 52, 54, 56

100971

Piece: 49,99



graphite black

5 Chef trousers Avito

Classic chef trousers for women with comfortable elastic waistband. Patch pocket on right thigh, 2 insertion pockets on the side, 1 hip pocket with piping.

65% polyester, 35% cotton. 240 g/m². 60 °C wash.

Inseam length: 82 cm at size 36.

■ Color: black

■ Size: 34, 36, 38, 40, 42, 44, 46, 48, 50

117518

Piece: 39,99



6 Chef trousers Nathan

Chef trousers with elastic waistband in houndstooth with integrated cord, 2 insertion pockets on the side and 2 patch hip pockets.

100% cotton. 240 g/m². 60 °C wash.

Inseam length: 80 cm at size 36.

■ Color: houndstooth

■ Size: 34, 36, 38, 40, 42, 44, 46, 48, 50, 52, 54, 56

120197

Piece: 19,99

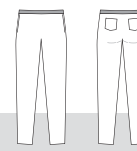
NEW - Buy more. Save more.

from 3 pieces*

17,99

Save 10%!

*if same color and size



4 Chef trousers Loreen

Striped women's chef trousers in straight cut with elastic waistband, 2 insertion pockets on the side and a hip pocket.

100% cotton. 235 g/m². 60 °C wash.

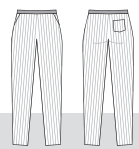
Inseam length: 80 cm at size 36.

■ Color: black/white

■ Size: 34, 36, 38, 40, 42, 44, 46, 48, 50, 52, 54, 56

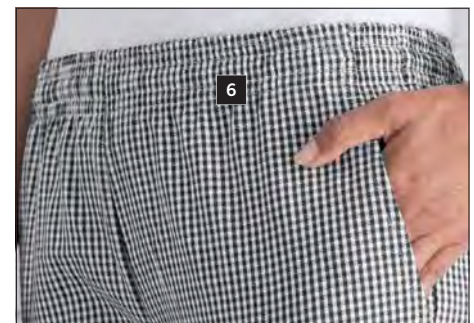
100926

Piece: 26,99



5

■ Comfortable elastic waistband in the back



6

■ Comfortable elastic waistband

ALL-ROUNDER

Bib apron
Bodo
Piece only
12⁹⁹



■ Easily wipeable

■ Adjustable neckband

■ Apron made of 100% PVC



1 Bib apron Bodo

Wipeable bib apron with grosgrain ribbons and adjustable neckband. The mesh lining on the inside ensures a comfortable fit. Available in black or white.

100% PVC. Hand wash.

■ Color: white, black

■ Size: 110x80 cm (l x w)

110x80 cm (l x w)

120186

Piece: 12,99



white

black



YOUR BENEFIT WITH BODO

- Wipeable material ensures highest hygiene
- Hygienically clean and thus suitable for food retail, meat counter, butcher, etc.



■ Practical pack of 3
■ Easy care



Bib apron Peter
Piece only
6.99
from 20 pieces*



2 Apron Malio

High-quality apron with solid fabric ribbons in pack of 3.
65% polyester, 35% cotton. 60 °C wash.

■ Color: white, red, bordeaux, taupe, black

■ Size: 45x80 cm (l x w), 60x80 cm (l x w), 85x100 cm (l x w), 95x100 cm (l x w), 95x120 cm (l x w)

45x80 cm (l x w)	120074	Pack of 3: 12,99 Piece: 4,33
60x80 cm (l x w)	120075	Pack of 3: 13,99 Piece: 4,66
85x100 cm (l x w)	120072	Pack of 3: 14,99 Piece: 4,99
95x100 cm (l x w)	120073	Pack of 3: 15,99 Piece: 5,33
95x120 cm (l x w)	118865	Pack of 3: 16,99 Piece: 5,66

3 Bib apron Harry

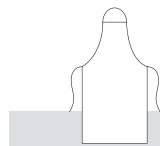
Bib apron made of cotton twill with solid fabric ribbons made of polyester in pack of 3.

100% cotton. 60 °C wash.

■ Color: black

■ Size: 110x80 cm (l x w)

110x80 cm (l x w)	118866	Pack of 3: 19,99 Piece: 6,66
-------------------	--------	---------------------------------



4 Bib apron Peter

Bib apron made of cotton twill.

White: 100% cotton. 95 °C wash.

Black: 100% cotton. 60 °C wash.

■ Color: white, black

■ Size: 110x80 cm (l x w)

110x80 cm (l x w)	100435	Piece: 8,99
-------------------	--------	-------------

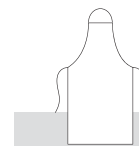
NEW - Buy more. Save more.

from 10 pieces*	from 20 pieces*
7,99	6,99
Save 11%!	Save 22%!

*if same color



white black



white red bordeaux taupe black



■ Perfect for your embroidery



► Customizing p. 142

APRONS

ACCESSORIES



black

white

1

T-shirt Charly
Piece only
7⁹⁹
from 3 pieces*



white

mango

red

bordeaux

blackberry

apple green

4

taupe

coca

grey

graphite

black

denim



black

white

2

black

white

3



white

bordeaux

taupe

grey

6

graphite

black

Bonnet Scull
Piece only
3⁹⁹
from 20 pieces*



white

red

bordeaux

taupe

grey

black

5



white

red

bordeaux

navy

black

7

1 T-shirt Charly

T-shirts in basic form for women and men.
100% cotton. 40 °C wash.

Back length: 62 cm at size M.

Color: white, black

Size: S, M, L, XL, 2XL, 3XL, 4XL

Short sleeve 100612 Piece: 9,99

NEW - Buy more. Save more.

from 3 pieces*

7,99

Save 20%!

*if same color and size



2 Chef hat Franz

Hard-wearing chef hat with velcro for individual size adjustment.
65% polyester, 35% cotton. 60 °C wash.

Color: white, black

100416 Piece: 8,99



3 Steward hat Willy

Hard-wearing steward hat with velcro for size adjustment.

White: 100% cotton. 95 °C wash.

Black: 65% polyester, 35% cotton. 60 °C wash.

Color: white, black

White 100250 Piece: 5,99
Black 118747 Piece: 5,99



white:



black:

4 Bandana

Headgear with ribbons for individual width adjustment.

Colored: 100% cotton. 60 °C wash.

Denim: 100% cotton. 40 °C wash.

Color: white, mango, red, bordeaux, blackberry, apple green, taupe, coca, grey, graphite, black, denim

Colored 100925 Piece: 5,99
Denim 115658 Piece: 12,99

NEW - Buy more. Save more.

from 10 pieces*

from 20 pieces*

Colored: 4,99

3,99

Save 16%!

Save 33%!

*if same color



colored:



denim:

5 Scarf Max

Hard-wearing, triangular scarf in pack of 3.

65% polyester, 35% cotton. 60 °C wash.

Color: white, red, bordeaux, taupe, grey, black

Size: 101 x 72 x 72 cm (l x w)

101 x 72 x 72 cm (l x w) 101140 Pack of 3: 11,97
Piece: 3,99



6 Bonnet Scull

Bonnet with airy mesh insert and velcro closure for individual size adjustment.

65% polyester, 35% cotton. 60 °C wash.

Color: white, bordeaux, taupe, grey, graphite, black

115877 Piece: 5,99

NEW - Buy more. Save more.

from 10 pieces*

from 20 pieces*

4,99

3,99

Save 16%!

Save 33%!

*if same color





**NEW
COLORS**



Button tape
5 buttonholes
Piece only
2,49



Ball buttons
Pack of 12, from
3,99

7 Baseball cap Jack
Baseball cap in different colors. Size adjustment possible.
100% cotton. Hand wash.
■ **Color:** white, red, bordeaux, navy, black
100713 **Piece: 5,49**



9 Button tapes
Button tapes with or without white fabric buttons. Washable at 95 °C.
■ **Color:** white
5 buttonholes (without buttons) 100216 **Pair: 2,49**
6 buttonholes (without buttons) 100217 **Pair: 2,49**
Row of 6 fabric buttons (with buttons) 100218 **Pair: 7,99**

10 Disposable gloves
Allergy-free gloves made of nitrile, that adapts perfectly to the hand due to its high elasticity. The glove is oil-, grease- and chemical resistant.
100% nitrile.
■ **Color:** white, black
■ **Size:** S, M, L, XL
117218 **Pack of 100: 13,99**
Piece: 0,14

8 Ball buttons
Matching to all chef jackets of our range. The ball buttons are available in pack of 12.
■ **Color plain:** white, yellow, mango, orange, rust, red, bordeaux, blackberry, plum, pink, apple green, moss green, olive **NEW**, green, smoky blue, turquoise, blue, dark blue, taupe, coca, light grey **NEW**, grey, graphite **NEW**, black
■ **Color plain shiny:** gold, silver
■ **Color plain flat:** black
■ **Color motif:** football, skull
■ **Color Italy:** white/red/green
■ **Color flat metallic:** copper, silver, gold
Plain 100972 **Pack of 12: 3,99**
Plain shiny 100972 **Pack of 12: 6,49**
Plain flat 101766 **Pack of 12: 3,99**
Motif football 101099 **Pack of 12: 6,49**
Motif skull 101269 **Pack of 12: 6,49**
Italy 101098 **Pack of 12: 6,49**
Flat metallic 101766 **Pack of 12: 7,99**

ACCESSORIES

CLASSIC LOOK

Chef shoe
Kiu
Pair from
69⁹⁹



- Sweat absorbing special lining
- Exchangeable insole
- Antistatic
- Anti-slip sole
- Robust leather
- With or without steel cap

1 Chef shoe Kiu

Chef shoe for women and men made of leather, with sweat absorbing Sanitized® treated special lining. Anti-slip and anti-static PU sole and reflective stripes. Exchangeable insoles. Available with and without steel caps.

Upper material: Leather.

■ **Color:** white, black

■ **Size:** 35, 36, 37, 38, 39, 40, 41, 42, 43, 44, 45, 46, 47, 48

Without steel cap

100797

Pair: 69,99

With steel cap

119270

Pair: 74,99

Chef clogs
Salerno
Pair only
52⁹⁹



2 Chef clogs Salerno

Clogs for women and men made of leather, with fixed heel straps, adjustable instep straps and non-slip rubber outsole.

Upper material and inner sole: Leather.

■ **Color:** white, navy

■ **Size:** 36, 37, 38, 39, 40, 41, 42, 43, 44, 45, 46, 47

100441

Pair: 52,99

Chef clogs
Haiti
Pair only
42⁹⁹



3 Chef clogs Haiti

Clogs made of real leather in flat design. TÜV-tested safety! Rearwards foldable and adjustable heel straps offer best running comfort.

Upper material and inner sole: Leather.

■ **Color:** white, black

■ **Size:** 37, 38, 39, 40, 41, 42, 43, 44, 45, 46

100315

Pair: 42,99

■ Anti-slip sole



4 Chef clogs Jamaica

Women's and men's clogs made of real leather in flat design, with Sanitized® treated special lining. TÜV-tested safety! These shoes offer best running comfort. Rearwards foldable and adjustable heel strap, non-slip sole and ventilation hole.

Upper material and inner sole: Leather.

■ Color: white, black

■ Size: 37, 38, 39, 40, 41, 42, 43, 44, 45, 46

100317

Pair: 42,99

Chef clogs
Jamaica
Pair only
42⁹⁹



■ Non-slip sole

■ Anatomically shaped footbed

5 Ergo Socks

Ergonomically shaped compression socks for women and men with medically perfectly matched pressure curve along the calf for improved regeneration after a long period of standing, increased stabilization of joints and muscles as well as more endurance and performance. Please measure calf circumference at the strongest point and read the appropriate size from the table.

85% polyamide, 15% spandex. 40 °C gentle wash.

■ Color: black

■ Size women: 3

■ Size men: 3, 4, 5

Women

117569

Pair: 39,99

Men

117570

Pair: 39,99



Socks
Ergo Socks
Pair only
39⁹⁹



■ More energy, endurance and performance

■ Injury prevention

■ Stabilization of joints /muscles

■ Increased coordination

■ Improved regeneration

SOCK SIZE



Please measure calf circumference at the strongest point and read appropriate size from the table.

Calf circumference in cm	32-39	39-44	45-50
Women	3	—	—
Men	3	4	5

SHOES & SOCKS

Simply feel good

WELLNESS & CARE

Hard-wearing, breathable and comfortable: This is how working clothes have to be for Wellness & Care. JOBELINE clothes are additionally stylish, look and feel are perfectly combined.





Smock
Allegra
Piece only

34⁹⁹

1



2



- Excellent moisture absorption
- High wearing comfort due to polyester-stretch
- Smooth and soft grip



Smock
Avena
Piece only

29⁹⁹

2

TENCEL®

TENCEL® fibers have high dry and wet strength, are soft and absorb moisture very well. Textiles made of this material have a silky, smooth grip and are very crease-resistant.

TENCEL® is a lyocell fiber of the company Lenzing. It is produced of the raw material wood, therefore consists of cellulose and is an industrially produced regenerated fiber that is made according to the direct liquidation procedure. It is mainly used in the textile industry, but also for fleece fabrics and technical applications.

The production of this fiber is a closed circuit and therefore particularly environmentally friendly and trendsetting. This process has been awarded with the „European Award for Environment“.

1 Smock Allegra

Modern smock with stand-up collar and practical zipper in the front. Circular narrow contrast piping in taupe on collar, on sleeve edges and on zipper. 2 large patch pockets on left and right hip. 55% lyocell (Tencel®), 45% polyester-stretch. 60 °C wash. Back length: 70 cm at size 36.

■ Color: white/taupe

■ Size: 34, 36, 38, 40, 42, 44, 46, 48, 50, 52, 54

Short sleeve 117548 Piece: 34,99



2 Smock Avena

Elegant wrap top in kimono look. Long ribbons at the waist for individual width adjustment and for binding. Circular edge and ribbons in contrasting taupe. 55% lyocell (Tencel®), 45% polyester-stretch. 60 °C wash. Back length: 70 cm at size 36.

■ Color: white/taupe

■ Size: 34, 36, 38, 40, 42, 44, 46, 48

Short sleeve 117549 Piece: 29,99



EASY CARE

Smock
Veda
Piece only
24⁹⁹

1

1

■ Non-iron

■ Fast-drying

■ Large patch pockets with
integrated cell phone pocket

■ Easy care seersucker

▶ Jeans Dover p. 81

LIGHT WEIGHT
extra thin material



1

Smock Kaya
Piece only
24⁹⁹



2

Smock Alina
Piece only
22⁹⁹



3



blue/white white/blackberry white/taupe



2

Large patch pockets offer a lot of space



3

Practical Roll-up sleeves

1 Smock Veda

Smock made of easy care seersucker material with 2 large patch pockets including integrated cell phone pocket on the right and chest pocket. Consistently buttoned.

60% polyester, 40% cotton. 60 °C wash.

Back length: 73 cm at size 36.

Color: blue/white, white/blackberry, white/taupe

Size: 34, 36, 38, 40, 42, 44, 46, 48, 50, 52, 54

Short sleeve, striped 117547 Piece: 24,99

Short sleeve, white with piping 120132 Piece: 24,99



2 Smock Kaya

Smock with V-neck, 2 large patch pockets, consistently buttoned.

65% polyester, 35% cotton. 60 °C wash.

Back length: 73 cm at size 36.

Color: blue/white

Size: 34, 36, 38, 40, 42, 44, 46, 48, 50, 52, 54

Sleeveless 117550 Piece: 24,99



3 Smock Alina

Striped smock with Roll-up sleeves and 3 patch pockets. Consistently buttoned.

65% polyester, 35% cotton. 60 °C wash.

Back length: 85 cm at size 36.

Color: blue/white

Size: 34, 36, 38, 40, 42, 44, 46, 48, 50, 52, 54

3/4 sleeve 100631 Piece: 22,99



SMOCKS

HOUSEKEEPING

**NEW
COLORS**



Smock
Erika
Piece only
19⁹⁹
from 3 pieces*

QUANTITY
DISCOUNT
7%

Chasuble
Heike
Piece only
19⁹⁹
from 3 pieces*



■ Button closure on the side

1 Chasuble Heike
Attractive chasuble with decorative piping, 2 pockets and button closure on the side.

White: 100% cotton. 95 °C wash.
Colored: 65% polyester, 35% cotton. 60 °C wash.
Back length: 78 cm at size 36.

■ Color: white, white/navy **NEW**, green, blue, navy/white **NEW**

■ Size: 34, 36, 38, 40, 42, 44, 46, 48, 50, 52, 54

Sleeveless, white 119266 Piece: 22,99
Sleeveless, colored 100684 Piece: 22,99

NEW - Buy more. Save more.

from 3 pieces*
19,99
Save 13%!

*if same color and size



white white/navy green blue navy/white



▶ Shirt Double-Long p. 51



2

Perfect for your embroidery



Customizing p. 142

2 Smock Erika

Smock with color matching decorations, V-neck and 2 pockets.

White: 100% cotton. 95 °C wash.

Colored: 65% polyester, 35% cotton. 60 °C wash.

Back length: 73 cm at size 36.

Color: white, white/navy **NEW**, green, blue, navy/white **NEW**

Size: 34, 36, 38, 40, 42, 44, 46, 48, 50, 52, 54

Sleeveless, white 119265 Piece: 22,99

Sleeveless, colored 100685 Piece: 22,99

NEW - Buy more. Save more.

from 3 pieces*

19,99

Save 13%!

*if same color and size



white white/navy green blue navy/white

Trousers
Mandy
Piece only
22⁹⁹



3

With cargo pocket on leg

Practical elastic waistband

3 Trousers Mandy

Women's trousers with elastic waistband and patch cargo pocket.

100% cotton. 60 °C wash.

Inseam length: 80 cm at size 36.

Color: white

Size: 34, 36, 38, 40, 42, 44, 46, 48, 50, 52, 54, 56

100331 Piece: 22,99

Trousers
Rina
Piece only
24⁹⁹



4

With 5 pockets

Practical elastic waistband
in the back

4 Trousers Rina

Women's trousers in 5-Pocket style with elastic band on the side and straight cut leg.

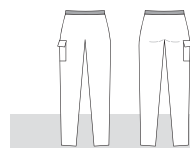
65% polyester, 35% cotton. 60 °C wash.

Inseam length: 80 cm at size 36.

Color: white, black

Size: 34, 36, 38, 40, 42, 44, 46, 48, 50

100904 Piece: 24,99



60°



60°

EASY



white black

TROUSERS

CARE INSTRUCTIONS

Product references



Easy to iron



Light weight
Particularly light products weighing less than 200 g / m².

Cleaning



Normal wash



Delicate wash



Hand wash



Dry-cleaners

Of course, you want to enjoy your new JOBELINE products for a long time. That's exactly what we want, too. That's why we do not take every product into our range. Any product must provide highest quality. In order to guarantee that, we constantly check our high quality criteria and standards.

And you can also do something: Please note the washing and care instructions as well as the indicated maximum temperatures. Many JOBELINE products are washable at 60 °C, sometimes even boil-proof and chlorine resistant, depending on the indication in the textile. These temperatures keep your laundry clean and hygienic.

Hardly anything is as annoying as white shirts that are suddenly pink. That is why it is not only important in gastronomy to sort your laundry and wash similar colors together. Never mix white laundry with colored laundry. Do not put too much laundry in your washing machine. This helps you to avoid unnecessary wrinkling and can often save you from ironing. For colored laundry use a detergent without bleach. Quite normal and no cause for concern: All products can shrink up to 3%.

You need more information about washing and care? Have a look at www.em-group.com.



Sock sizes

Please measure your calf circumference at the strongest point. Then take the appropriate size from the table.

Calf circumference in cm	32 - 39	39 - 44	45 - 50
Women	3	–	–
Men	3	4	5

MEASURE UP

Women

Order size	International size	2 Chest	3 Waist	4 Hip
34	XS	78-81	64-66	88-91
36	S	82-85	67-70	92-95
38	S	86-89	71-74	96-98
40	M	90-93	75-78	99-101
42	M	94-97	79-82	102-104
44	L	98-102	83-87	105-108
46	L	103-107	88-93	109-112
48	XL	108-113	94-99	113-116
50	XL	114-119	100-106	117-121
52	2XL	120-125	107-112	122-126
54	2XL	126-131	113-119	127-132
56	3XL	132-137	120-126	133-138

Men

Order size	International size	2 Chest	3 Waist	5 Inseam
42		82-85	70-73	77-79
44	S	86-89	74-77	78-80
46	S	90-93	78-81	79-81
48	M	94-97	82-85	80-82
50	M	98-101	86-89	81-83
52	L	102-105	90-94	82-84
54	L	106-109	95-99	83-85
56	XL	110-113	100-104	84-86
58	XL	114-117	105-109	85-87
60	2XL	118-121	110-114	86-88
62	2XL	122-125	115-119	87-89
64	3XL	126-129	120-124	88-90
66	3XL	130-133	125-129	89-91
68	4XL	134-137	130-134	90-92
70	4XL	138-141	135-139	91-93
72	5XL	142-145	140-144	92-94
74	5XL	146-149	145-149	93-95

Men's shirts

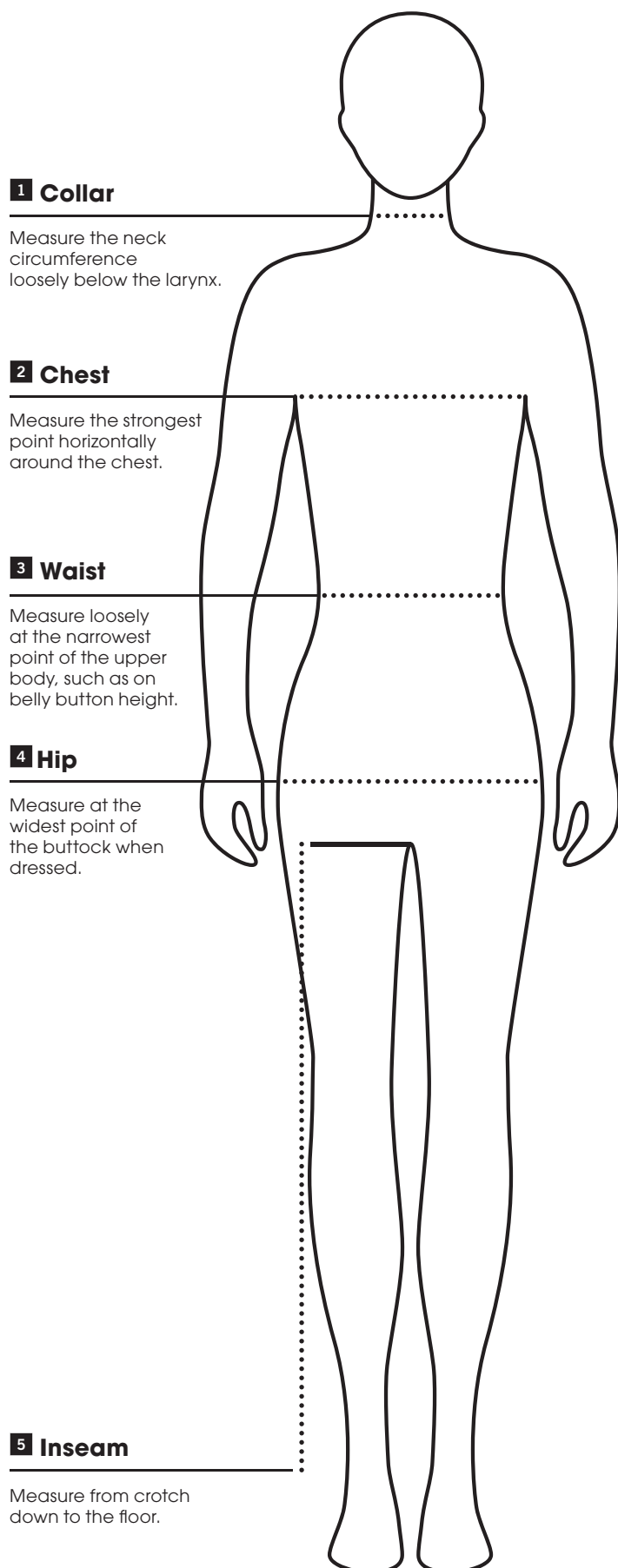
Chest and waist size make the measurement of the shirts.

1 Collar = order size	37	38	39	40	41	42
2 Chest	90-93		98-101		106-109	
3 Waist	78-81		86-89		95-99	
1 Collar = order size	43	44	45	46	47	48
2 Chest	114-117		122-125		130-133	
3 Waist	105-109		115-119		125-129	



Your order size can be found if you compare your measured values of your body with the sizes in the tables.

MEASURE UP? THAT'S HOW IT WORKS!



IT DOES NOT FIT? THAT DOES NOT EXIST!



Too long? Wrong sleeves? That does not exist at **JOBELINE**. Our seamstresses shorten sleeves of chef jackets, shirts, blouses and T-shirts for you. This is how a long sleeve top easily becomes a 1/2 sleeve top. Also easy to shorten: Aprons and trousers. Tell us which measure you need - our alteration service would be glad to fulfill your wishes.

This service is feasible at many items within ten days at a low price.

OUR SERVICES

- Cost-saving alteration service
- Feasible at many products
- Quick realization within 10 working days (if goods are in stock and order clarity prevails)
- No minimum order quantity

Alteration service	Price per piece of clothing
Shorten trousers	6,60
Shorten chef jacket/blouses/shirt sleeves (long sleeve in 1/2 sleeve)	6,60
Shorten width of apron	6,60
Shorten length of apron	4,40

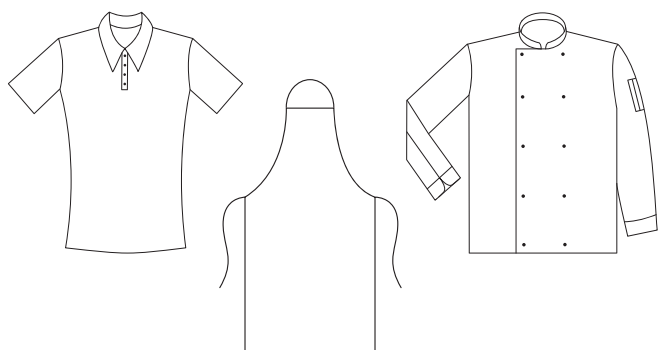
More information at
www.em-group.com
and by calling our service hotline at
+49 8272 807 447.

YOUR STYLE. YOUR LOGO. YOUR UNIQUENESS.

READY IN ONLY FOUR STEPS

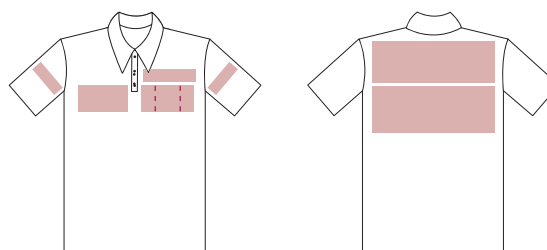
1. STEP

CHOOSE PRODUCT



2. STEP

CHOOSE POSITION



Examples for positionings



Choose your favorite. Nearly every product is customizable. We are happy to assist you in your decision-making. You have no logo or your previous logo no longer meets your requirements? Then use our individual logo creation. More information at www.em-group.com

Choose the position on your desired product. Some examples of positionings can be found in the sketch above. We are happy to advice you by phone at **+49 8272/807 447** or online at www.em-group.com

CUSTOMIZING TYPE

LOGO EMBROIDERY

- High quality appearance
- **Excellent cost-performance ratio**
- **Fast implementation** : Production time 10–15 working days*
- **Great color selection**
- Embroidery on chest pocket possible
- **Durable**
- **Boil-proof** at 95°C
- **No minimum order quantity**

Logo size in cm ²	up to 50 cm ²	up to 150 cm ²	up to 500 cm ²
Price per piece in €	5,19	6,99	9,49
Stencil costs (once)	29,99	29,99	29,99
Setup costs (per order)	9,99	9,99	9,99

BOIL-PROOF AT 95°C

*If goods are in stock and order clarity prevails.

LOGO PRINT

- **Fast implementation:** Production time 10–15 working days*
- Possible on nearly all items
- **No minimum order quantity**
- **Modern appearance** of your premises
- Shining colors
- **Color gradients** possible
- **Durable**
- High opacity

Logo size in cm ²	up to 60 cm ²	up to 300 cm ²
Price per piece in €	2,99	4,99
Stencil costs (once)	29,99	29,99
Setup costs (per order)	9,99	9,99

WASHABLE AT UP TO 40°C

*If goods are in stock and order clarity prevails.

SEW ON OR IRON ON

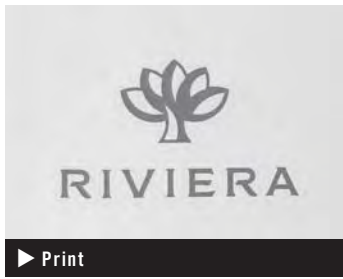
- **Flexible use:**
Detach und reuse
- **Various background and logo colors**
- **Chlorine resistant & boil-proof at 95 °C**
- Embroidery of chest pocket possible
- **Fast implementation:** Production time 10 working days*
- **Minimum order quantity 50 pieces**

Patch	up to 7,5 cm ²	up to 12,5 cm ²
	Price per piece in €	
Patch	2,99	4,99
Iron-on patch	2,99	4,99
Self-adhesive patch	2,99	4,99
Patch with 2-fold velcro	2,99	4,99
Stencil and setup costs	Free of charge, included	
Sew on or iron on	0,95	0,95

*If goods are in stock and order clarity prevails.

3. STEP

CHOOSE TYPE OF CUSTOMIZING



4. STEP

PLACE YOUR ORDER

Send us your text and/or logo file by e-mail, as well as information about your desired type, positioning, color and size. You will receive your offer within 48 hours. Confirm the order by payment and receive your goods within 5–15 working days*.

More information at www.em-group.com
and by phone at our service hotline +49 8272 807 447.

* If goods are in stock and order clarity prevails.

MONOGRAM EMBROIDERY

- **Fast implementation:** Production time 5–10 working days*
- Embroidery of chest pocket possible
- **Various color and font selection**
- **Boil-proof** at 95 °C
- **No minimum order quantity**

OUR FONT SELECTION:

Old English *Designer* *Brush Script* *Inscription*
Cascade Light *Compact* *Prestige Script* *Diana Script*
Allegra Script *Splash* **Block New**

Monogram embroidery

Possible font height: 1,5 cm, 2,5 cm and 3,5 cm; maximum 3 lines possible

Price per piece **4,19**

Stencil costs (once) **Free of charge, included**

Setup costs (per order) **Free of charge, included**

BOIL-PROOF AT 95 °C

*If goods are in stock and order clarity prevails.

LASER BRANDING

- Best suitable for laser branding are **jeans fabrics, fleece and further materials with high share of synthetic fiber**
- **Fast implementation:** Production time 15 working days*
- Advanced finishing process
- Extremely robust and durable
- Special, visual and haptic effect
- Lifelong durability
- **No minimum order quantity**

Laser branding

up to 250 cm²

up to 1000 cm²

Price per piece **4,49** **6,99**

Stencil costs (once) **29,99** **29,99**

Setup costs (per order) **9,99** **9,99**

*If goods are in stock and order clarity prevails.

FROM ADAM TO ZENA: LIKE THIS YOU FIND YOUR FAVORITE PRODUCT IMMEDIATELY.

Directly to your working area:

■ Service	12 – 83	■ Kitchen	96 – 133
■ Reception	84 – 89	■ Wellness & Care	134 – 139
■ Sales	90 – 95		

Accessories

Ball buttons	131
Baseball cap Jack	131
Belt pouch	82
Bow Alva	82
Bow tie Marco	82
Button tapes	131
Cashier holster	
Anton	82
Jerry	82
Rio	82
Tom	82
Disposable gloves	131
Scarf	
Kelly	86
Max	130
Sleeve holder	82
Suspenders	82
Suspenders with leather details	82
Tie	
Bo	83
Bo slim	83
Color	83
Color slim	83
Terry	83, 92
Terry Satin	83
Waiter chain	82
Wallet	
Fred	82
Salzburg	82

Aprons

Ben	17, 29
Benito	41
Botero	19, 23
Bristol	31
Harris	41
James	42
Lore	37
Malio	129
Melek	33
Mora	36
Mora stripes	39
Nando	25, 30
Ramie	13
Smoking	42
Sonora	43
Sun	15, 35
Taglio	27

Bib aprons

Ben	17, 29
Bodo	128
Botero	19, 23, 147
Botero herringbone	23, 37, 147
Bristol	31
Dakota	31
Dario	30
Faro	26
Gusto	33
Harry	129
Hugo	41
Juno	41
Lenox	30
Lionel	26
Lore	37
Miko	32
Mora	36
Mora stripes	39
Nando	25
Pepe	21
Pepe Gourmet	21
Pepe Veggie	21
Pero	41
Peter	129
Poca	21
Ramie	13
Smoking	42
Sonora	43
Sun	15, 35
Taras	27, 30
Taras Canvas	31
Apron	
Mina	91
Ramie	13
Vest apron	
Oslo	43
Sonora	43

Blazer & Jackets

Carina	85
Kairi	85
Mona	85
Piero	89

Blouses

Bailey	54
Cecaria	59
Chambray	52
Clea	55
Davis	54
Delano	65
Filipa	61
Fiore	63
Harper	55
Jean	19, 53
Jona	52
Kate	58
Kim	17, 57
Lucie	67
Maren	67
Tabea	60
Theresa	55
Zena	67

Cardigan

Cecilia	77
Cristiano	77

Chef headgear

Bandana	130
Bonnet Scull	130
Chef hat Franz	130
Steward cap Willy	130

Chef jackets/shirts

Adam	117
Advanced	115
Aila	105
Ailin	109
Alice	99
Amanda	117
Carter	101
Delight	119
Emil	109
Jannis	103
Jogi	110
Joker	113
Kent	119
Leon	103

► Blouse/Shirt Delano p. 65,
Vest Austin p. 75



Lorenzo	111
Luisa	103
Matteo	103
Milan	109
Oskar	99
Paolo	107
Pascal	97
Pauline	107
Pirlo	111
Premium Chef	121
Premium Chef fabric buttons	121
Professional	119
Samuel	105
Scott	99
Vigo	113
Vita	110

Chef trousers

Avito	123, 127
Colin	124
Cosma	127
Fabio	125
Francis	124
Holger	124
Lars	123
Liam	125
Loreen	127
Luke	123
Nathan	125, 127
Nick	125
Quentin	122, 126
Severin	122, 126

Dresses

Leona	85
-------------	----

Jackets

Blanc	95
Everest	95
Jove	94
Kem	94
May	79
Saloa	92

Pullover

Sofia	77
Solaro	77

Shirts

Bruce	59
Chambray	52
Davis	54
Delano	65
Harper	55
Jackson	54
Jean	19, 53
Jona	52
Jules	58
Kilian	55
Kim	17, 57
Lius	55
Marc	61
Noah	63
Rico	61

Shoes

Haiti	132
Jamaica	133
Kiu	132
Salerno	132

Skirts

Linea	87
Semra	87

Slip-over

Miranda	77
Mirco	77

Smocks & Chasubles

Alfie	91
Alina	137
Allegra	135
Avena	135
Erika	139
Heike	138
Kaya	137
Veda	137

Socks

Ergo Socks	133
------------------	-----

Suits & Costumes 84 – 89

T-Shirts

Benita	50
Cato	45
Cato Chambray	47
Cato Comfort	45
Cato Line	47
Charly	130
Chiara	50
Double	51
Double-Long	51
Double-V	51
Fly	49
Oliver	15, 47

Trousers

Chino	80
Finley	89
Griffin	93

Jeans

Dover	81
Jaden	15, 17, 81
Malin	87
Mandy	139
Nayla	87
Rina	139

Vests

Austin	75
Bistro	71
Blake	69
Classic	75
Lagos	75
Lenn	92
Limerick	69
Pinstripe	73
Sidney	86, 89

GENERAL TERMS AND CONDITIONS



1 Scope and provider

These General Terms and Conditions apply to all orders you place with E.M. Group International GmbH, Hettlinger Straße 9, 86637 Wertingen, represented by its managing director, Siegfried Horn.

Service hotline: Mon. to Thu. 7.30 a.m. – 5. p.m. CET, Fri 7.30 a.m. – 2. p.m. CET,

phone: +49 8272 807 447, fax: +49 8272 807 451,

e-mail: service@em-group.com, online shop: www.em-group.com.

Our goods are exclusively offered to commercial consumers.

Our deliveries, services and offers are provided exclusively on the basis of these General Terms and Conditions which shall also apply to all future business relationships even if they are not expressly agreed again. Your or any third party's terms and conditions of business shall not apply even if we do not object to their application in a particular case.

The contract language shall only be German or English.

You can access and print out our currently valid General Terms and Conditions at the following website: www.em-group.com.

2 Conclusion of contract

The presentation of goods in the online shops, catalogues and advertisements shall not be binding offers to conclude a purchase agreement. Rather, such presentation shall represent a non-binding invitation to order goods by phone, fax, e-mail or online. Upon receipt of your order, we shall check whether the articles ordered are available and we shall then make an individual offer which you may accept in writing or by paying the purchase price. We shall be bound to our offer for a period of 14 days. A purchase agreement for the goods or services shall be concluded only if you pay the amount stated in the offer or expressly accept our offer in writing. Sending an e-mail shall be sufficient as written acceptance.

3 Prices

Prices apply to the extent of delivery and services stated in our individual offer. Prices are quoted in EURO ex works, plus packaging and shipping charges and, where applicable, plus statutory value-added tax. Customs fees, charges and other public levies shall be paid by the recipient.

4 Payment terms

Our individual offers may be paid for at your option by bank transfer, by credit card (VISA/MasterCard) or via PayPal.

5 Set-off; right of retention

You shall have a right of set-off only if your counter-claim has been determined without further legal recourse or is not disputed by us. You may exercise a right of retention only where your counter-claim is based on the same contractual relationship.

6 Place of fulfillment, delivery; retention of title

The place of fulfillment for all obligations under this contractual relationship shall be Wertingen, Germany unless otherwise stated. We shall select the mode of dispatch and the kind of packaging according to our best judgement. Unless otherwise agreed, goods shall be delivered upon receipt of payment ex our warehouse to the delivery address specified by you. The goods shall remain our property until full payment of the purchase price. Any dates or periods for the delivery of goods or the provision of services announced by us shall always be without commitment, unless we promise a fixed period or date. With regard to the dispatch of goods, any delivery period or delivery date shall refer to the time of hand-over to the carrier, haulage contractor or other third party engaged by us for shipment. Although, in principle, we make delivery to any place in the world, we reserve the right to decide on the delivery of goods ordered in each particular case. We shall not be liable for any inability to deliver or any delay of delivery where this is caused by force majeure or any other circumstance which was unforeseeable at the time the contract was concluded. We shall be entitled to rescind the contract if such circumstances make delivery or service provision by us substantially difficult or impossible. Where such impediment is just of a temporary nature, the delivery and service provision deadlines shall be extended accordingly. We shall be entitled to make partial delivery if

you can use the part of the delivery supplied to you in accordance with the contractual purpose, this does not cause any unacceptable additional expense to you and delivery of the remaining goods is ensured. We reserve title to the goods until complete settlement of all claims under the current business relationship. Prior to transfer of ownership of the goods under reservation of title, pledging or assignment as security shall not be permitted.

7 Right to return goods

You buy without risk because you are entitled to return the goods within ten days of receipt of the goods. This right does not apply to any goods already used or soiled which are made to customer specifications (e.g. hotel name printing) or are clearly tailored to personal requirements. To exercise your right of return, send the unused and clean goods back to us at your own expense, if possible in their original packaging, otherwise in a comparable safe packaging together with all accessories and all packaging components.

8 Warranty

The warranty period shall be one year from delivery of the goods. You are obligated to inspect the goods for quality defects and incorrect quantity without delay and with due diligence and notify us of any apparent defects within seven days of receipt of the goods. It shall be sufficient if the notice of defects is dispatched within the time limit. This shall also apply to any hidden defect detected later with respect to the time of detection. Warranty claims cannot be asserted if you fail to comply with your duty to inspect and notify us of a defect. In the event of any defect, we shall at our option make subsequent improvement or substitute delivery (supplementary performance). In the case of subsequent improvement, we shall not have to bear the additional costs caused by the goods having been brought to a place other than the place of fulfillment, unless where such transfer is in compliance with the intended use of the goods. If supplementary performance fails twice, you shall be entitled at your option to demand abatement or rescind the contract.

9 Liability

Unlimited liability: We shall be liable for wilful intent and gross negligence. In the event of slight negligence, we shall be liable in accordance with the provisions of the product liability act and for any damage caused by injury to life, body or health of any person. Limitation of liability: Apart from that, we shall be liable in any case of slight negligence only for a breach of a material contractual obligation, i.e. a contractual obligation fulfillment which enables the proper performance of the contract in the first place and on which the contractual partner may typically rely. This limitation of liability shall also apply for the benefit of our vicarious agents.

10 Final provisions

Should any of the provisions of these General Terms and Conditions be or become invalid, this shall not affect the validity of the remaining provisions. Should any provision which is actually necessary not be contained in the contract concluded between you and us or in these General Terms and Conditions, the parties hereto undertake to agree upon a valid provision which they would have agreed, taking account of their commercial goals, if they had realised the gap.

11 Law and jurisdiction

Any contract between you and us shall be governed exclusively by German law, excluding application of the United Nations Convention on Contracts for the International Sale of Goods (CISG). The place of jurisdiction for any dispute arising from or in connection with a contract concluded between you and us shall be Wertingen, Germany.

12 Data protection

We process your personal data for the purpose of order processing and to send you further offers, if necessary, by third parties. In this context, we also regularly submit the data to processors. Further information and information on the processing of your data can be found at www.em-group.com.

Wertingen, January 2019

OUR BESTSELLERS IN PRICE AND PERFORMANCE



white mango red bordeaux blackberry apple green



moss green olive dark blue navy sand taupe



coca light grey grey graphite black black/white (herringbone)

Bib apron Botero & Botero herringbone

High-quality bib apron made of robust and easy-iron blended fabric. The ribbons can be crossed in the back to relieve the neck. With tea towel loop, pen loop and two large pockets in the front. The right front pocket offers space for a mini tablet. Available in various colors.

Plain: 65% polyester, 35% cotton. 60 °C wash.

Herringbone: 100% cotton. 60 °C wash.

■ **Color:** white, mango, red, bordeaux, blackberry, apple green, moss green, olive, dark blue, navy, sand, taupe, coca, light grey, grey, graphite, black, black/white (herringbone)

■ **Size:** 88x77 cm (l x w)

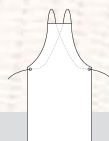
Plain: 88x77 cm (l x w) 124906 Piece: 12,99

Herringbone: 88x77 cm (l x w) 124899 Piece: 16,99

NEW - Buy more. Save more.

	from 10 pieces*	from 20 pieces*
Plain: 88x77 cm	11,99	10,99
	Save 7%!	Save 15%!

*if same color



**NEW
COLLECTION**

QUANTITY
DISCOUNT
%



■ Crossed ribbons in the back relieve the neck

■ Hard-wearing & durable material

■ Easy-iron

JOBELINE

work · fashion · fun

Chef jacket
Carter
Piece only

39⁹⁹

▶ ◆ 101

VEGA

JOBELINE

Parceiro exclusivo



www.DAUTI.pt

Hotelwäsche
Erwin Müller

pulsiva

Rua Nova, 420 | 4570-074 Balasar | Portugal Tel. +351 252 954 026 Fax. +351 252 955 335 | comercial@dauti.pt